

# Social Media and Hurricane Sandy

NYU Rudin Center for Transportation

November 27, 2012

# Transportation During and After Hurricane Sandy

Report & Interactive Timeline:  
**[NYURudinCenter.com/sandy](http://NYURudinCenter.com/sandy)**

# Upcoming Event at NYU Rudin

**Short Talks, Big Ideas**

December 12

**Register here:**

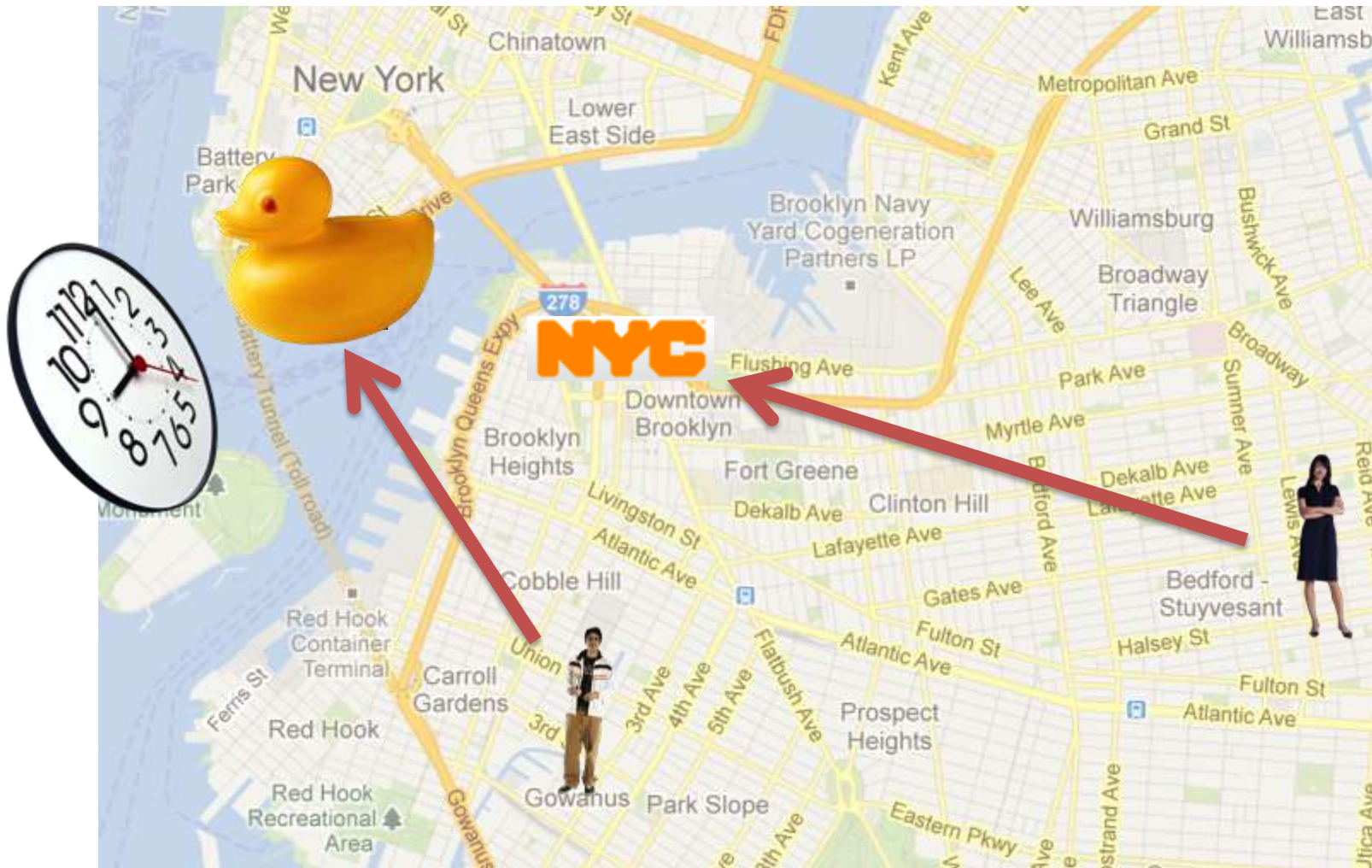
<http://wagner.nyu.edu/rudincenter/>



# Social Media's Role in #Sandy



# When the Power Goes Out





# Not the First Time Social Media Saved the Day

WSJ

MARKETWATCH

BARRON'S

SMARTMONEY

ALLTHINGSD

FINS

MORE

News, Quotes, Companies, Videos

SEARCH

Monday, November 26, 2012 18:39:1 GMT

THE WALL STREET JOURNAL. NEW YORK

Log In Register Subscribe Now

<< PREVIOUS

METROPOLIS

NEXT >>

News

Culture

Schools

Sports

Politics

Real Estate

Video

August 28, 2011, 10:54 AM ET

City Website Crashes Under Pressure From Irene

Search Metropolis

SEARCH

Article

Comments (2)

METROPOLIS HOME PAGE »

Email

Print

f

t

g+

in

A

A

By Michael Howard Saul

New York City's government website — a platform Mayor Michael Bloomberg has strongly encouraged the public to use for information about Hurricane Irene — has crashed amid overwhelming volume, city officials confirmed Friday morning.

"It is at the moment experiencing a very, very high volume of folks trying to get on," said Nicholas Sbordone, a spokesman for the city's Department of Information Technology and Telecommunications. "We are working to unclog it as quickly as we can."

Sbordone said the city will be adding additional web and application servers to bring NYC.gov back online. One official said the site has been intermittent, noting that it was down at some point Thursday night as well.

"It's just a matter of extraordinarily high volume," Sbordone said.

The site was very sluggish for a good portion of Thursday, frustrating many New Yorkers. During a public appearance Thursday, the mayor encouraged the public to

It's time we met.<sup>SM</sup>

LEARN MORE ▶

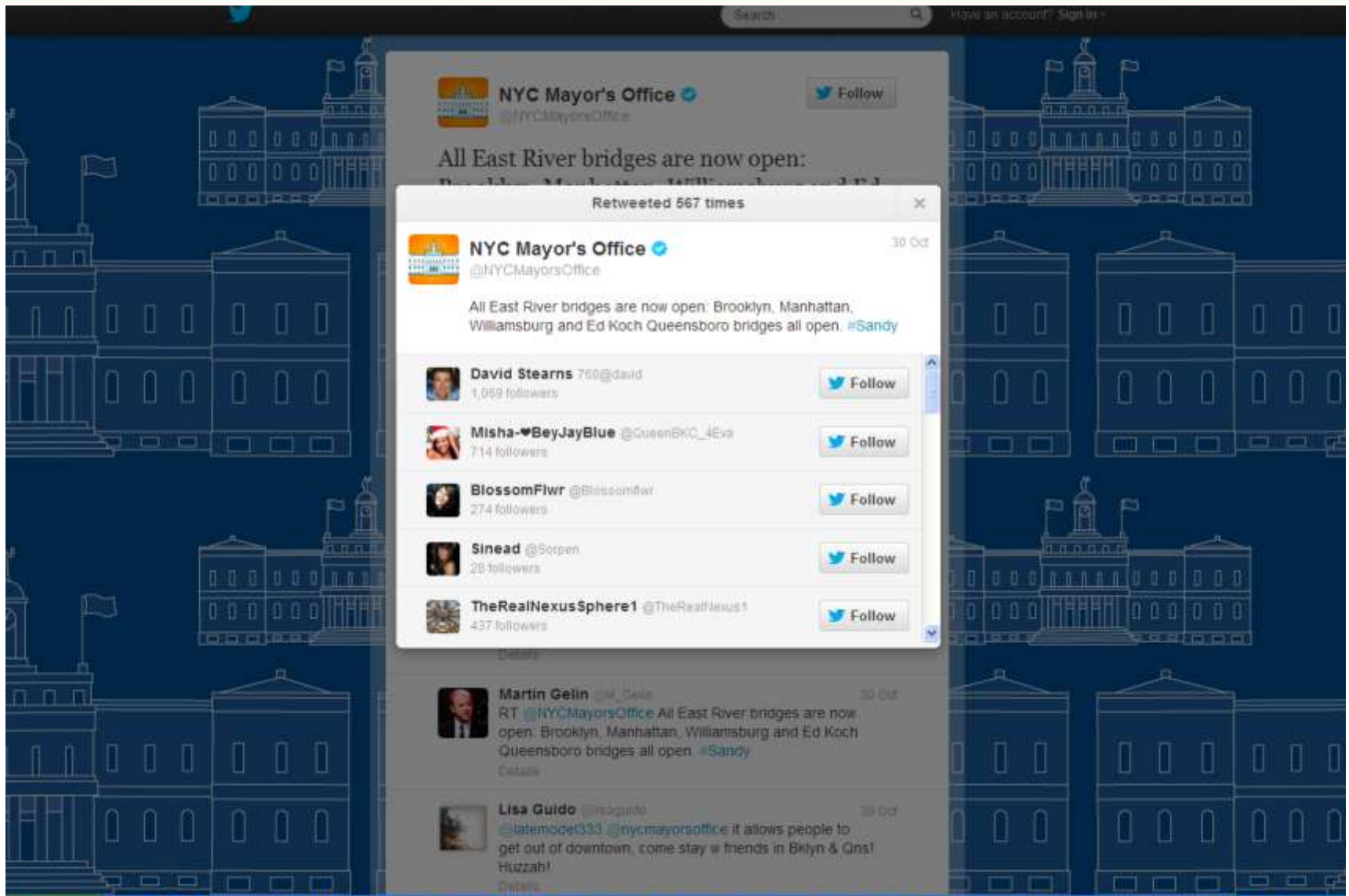
LOCATIONS ▶

CONTACT ▶





# Using Twitter to Amplify





# Highlighting Recovery



**nyc\_dot**

NYC DOT Providing for the safe, efficient and sustainable movement of people and goods, in order to enhance the economy and quality of life in New York City.  
<http://www.nyc.gov/dot>

21  
photos

5  
following

54  
followers





# The Daily POT HOLE SANDY RECOVERY

A publication of New York City DOT

Follow The Daily Pothole: Sandy Recovery as DOT and other City agencies mobilize across the City. DOT crews are especially focused on neighborhoods hardest hit by the storm. Crews are using dump trucks, payloaders and other heavy equipment to remove sand and debris from residential streets and driveways, instead of for paving aging roads.

Over 544 crews and 1,727 trucks have been deployed since the storm, working 12-hour shifts in the city, the Rockaways, and elsewhere. They have removed more than 151,474 tons of debris. (as of 11/20)

[Volunteer to help with NYC Service](#)

[Hurricane Recovery Photos](#)

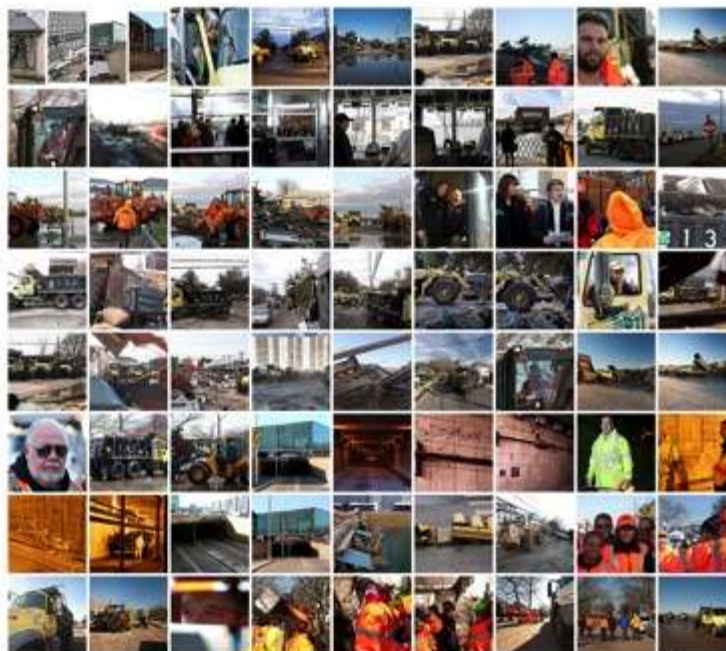
## Hurricane Sandy



The NYC Department of Transportation is playing a significant role in preparation and recovery from Hurricane Sandy.

121 photos | 1,225 views

Items are from between 01 Nov 2012 & 10 Nov 2012.



Children from the Auburndale Soccer Club, based in Queens, load donated goods into a DOT vehicle bound for the Rockaways on November 17, 2012.

DOT's Queens Arterial Emergency Response Unit, based out of Harper Street Yard, delivered the goods.

2 days ago



# Crisis Challenges

## Challenges

- Message coordination
- Approvals
- Risk versus speed
- Creating a more open communications culture



## For the Audience

Where do you want to find  
information in an emergency?



# Keep in Touch!

**Robin Lester Kenton**

**Director of Strategic Communications, NYC DOT**

**[rlesterkenton@dot.nyc.gov](mailto:rlesterkenton@dot.nyc.gov)**



**[facebook.com/NYCDOT](https://facebook.com/NYCDOT)**  
**[twitter.com/NYC\\_DOT](https://twitter.com/NYC_DOT)**  
**[nyc.gov/bikeshare](https://nyc.gov/bikeshare)**

# MTA & Social Media Response to Superstorm Sandy

NYU Wagner Rudin Center for  
Transportation Policy &  
Management

November 27, 2012





# MTA & Social Media

- Updated Information via Twitter
- Video via YouTube (Joe Chan)
- Still Photos via Flickr+Twitter & Facebook
  - Before: Preparation
  - During: Storm Hits
  - Aftermath, Part 1: Damage
  - Aftermath, Part 2: Restoration
- Public Response

# Latest Updates via Twitter

- RTs of Major Announcements by Governor
- Status of our Infrastructure
- Service Updates
  - Subway, Buses, LIRR, MNR have separate accounts
- Links to Updated Maps
  - RT'ing self every hour
- Responses to Questions
  - “For everyone asking about ...”

# Still Photos

- Uploaded to Flickr & Facebook
- Tweeted Links to Flickr
  - Whole galleries or individual stills
- Four Basic Categories of Photos
  - Before: Preparation
  - During: Storm Hits
  - Aftermath, Part 1: Damage
  - Aftermath, Part 2: Restoration

# Photos: Preparation





## **Workers Block Subway Vents**

Action designed to reduce flooding, not prevent.





## **Generator Placed at Bus Depot**

Generator will ensure power throughout the storm.



## **Sandbags & Plywood Barricade Bus Depot**

Action designed to reduce flooding, not prevent it.



## **Express Buses Stored on Higher Ground**

Express buses removed from low-lying depots.





## **Last Passenger Boards Last Train**

Last train to depart from Grand Central Terminal: A local to Stamford shortly after 7 p.m. on Sunday, Oct. 28.

## Grand Central Terminal on Lockdown

Metro-North Assistant Station  
Master locks Grand Central in  
advance of the storm.







## **LIRR Ticket Machines Shrink Wrapped**

To protect them from wind-driven rain.

# Photos: During Storm







## MTA ‘Takes Over’ New Digital Ad Screens

The MTA “takes over” digital screens normally used for advertising. Helps customers avoid walking into closed stations.



## **Chairman Inspects Flooding**

MTA Chairman Joe Lhota inspects flooding in Lower Manhattan with NYCT President Tom Prendergast



## **Empty Grand Central Terminal**

Terminal Closed in advance of the storm.





## **Governor and Chairman Downtown**

Governor and Chairman Lhota are on scene at Hugh L. Carey (Brooklyn-Battery) Tunnel.



## **Subways Connect to Free ‘Bus Bridge’**

Buses take the place of subways while tunnels are flooded.



# Photos: Damage



# **Hugh L. Carey (Brooklyn-Battery) Tunnel Flooding**

Most-seen photo on Flickr is from a traffic camera.

Met







## **Washed Out Tracks**

Ballast washed out from under the A line to the rockaways.





## **Boat on Metro-North's Hudson Line**

Pleasure craft washed onto tracks.





## **Trees Down Across Tracks**

Trees on Metro-North tracks.



## Tracks Flooded

Near Garrison on Metro-North Hudson Line





## **Queens-Midtown Tunnel Flooding**

Water and ceiling become one in distance.



## **LIRR West Side Yard Flooded**

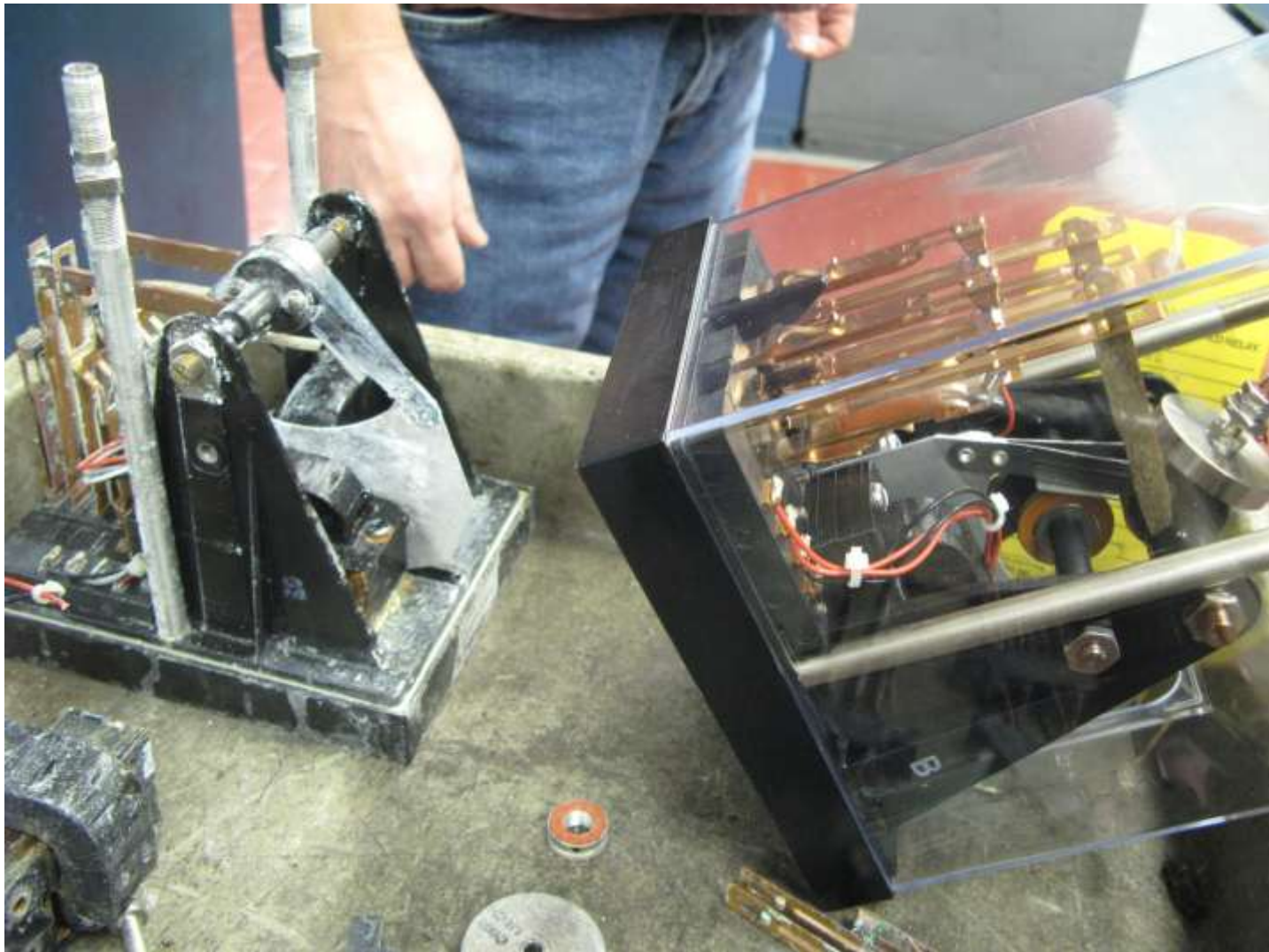
LIRR yard floods; trains had been moved to high ground.





## **Boat Attached to Dock on LIRR Parking Lot**

Boat attached to its dock floats to LIRR parking lot.



## Damaged Signal Components

Damaged vs. pristine version





## South Ferry Station Flooding

Platform, tracks, totally flooded.

# Photos: Restoration







## **Boat Lifted Off of Tracks**

Crane puts boat onto flatbed freight car.





## **Pumping 14<sup>th</sup> Street Tunnel (L)**

Used on Front Page of NY Times



## **Pumping 14<sup>th</sup> Street Tunnel (L)**

Some water remains.





## **LIRR Customer Reps Greet Commuters**

They provide info on abridged service.



# Public Response



**Charlseey** @just\_jotter

1 Nov

With God as my witness, I will never take the subway for granted again! @MTAInsider @NYCMayorsOffice #NYC #mta #subway #manhattan #Sandy

Expand

# Hurricane Sandy: Live Updates

Hurricane Sandy, still hours away from making landfall in New Jersey, was already causing floods and destruction across the Mid-Atlantic region on Monday. Even as thousands fled the storm, officials urged those who stubbornly remained in its path to get out of the way and tried to prepare for a devastating storm surge expected at high tide Monday night. Transit shutdowns and school closings were expected to last at least into Tuesday.

FULL COVERAGE

COMMENTS

## HIGHLIGHTS

- 2:01 pm Parts of Atlantic City Are Flooded
- 12:42 pm President Urged People to Heed Evacuation Orders
- 12:35 pm Considering the Storm's Impact on Election Polling
- 11:39 am New York City Schools Will Remain Closed on Tuesday
- 11:30 am Video: Mayor Bloomberg Gives Update

## 4:16 pm Bridges Around New York to Close

Andy Newman

Half a dozen bridges in and around New York City are closing, Gov. Andrew M. Cuomo announced Monday afternoon.

The Tappan Zee Bridge over the Hudson River, about 20 miles north of New York City, closed at 4 p.m.

The George Washington Bridge, the Verrazano-Narrows Bridge, the Throgs Neck Bridge and the bridges to the Rockaways are closing at 7 p.m., the governor said.

The Holland and Brooklyn-Battery Tunnels closed earlier in the day.

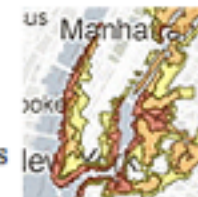
For now, the Lincoln and Midtown Tunnels will remain open, along with the Robert F. Kennedy Bridge and the Bayonne, Goethals and Outerbridge crossings.

But he added, "If the winds continue to increase, and the weather conditions get worse, they can close on very, very short notice."

SHARE THIS POST ON: [Twitter](#) [Facebook](#)

## NEW YORK CITY EVACUATION ZONES

There are three evacuation zones in New York City that are based on the strength of the hurricane making landfall. Mayor Bloomberg has issued a mandatory evacuation of Zone A.



## LIVE IMAGES

### The View from Above

Watching the hurricane from the 51st floor of the New York Times building. Updates once per minute.



Updated 2 P.M. ET Oct. 29

Max. winds **90** m.p.h. Category **1** [Larger Map »](#)





# Near Landfall, Storm Pounds East Coast

PHOTOGRAPHS: LATEST IMAGES

TIMESCAST: UPDATES ON THE STORM **NEW**



Michael Appleton for The New York Times

1 2 3 4 5 6 7 8 9 10 11 12 13 14 15 16 17 18 19 20

A collapsing crane on a West 57th Street skyscraper in New York.

## Hurricane Grows in Strength, Imperiling a Swath of States

By JAMES BARRON and BRIAN STELTER 2:40 PM ET

Hurricane Sandy, a storm that historians say is on a scale with little precedent along the East Coast, is hours away from a landfall that is expected to paralyze life for millions of people.

• State-by-State Guide to the Storm 3:50 PM ET

Post a Comment | Read (705)

## Live Updates

4:16 P.M. Bridges Around New York to Close

4:07 P.M. Governor Cuomo News Conference

4:04 P.M. Atlantic City Official: 'City Is Under Siege'

MORE UPDATES >

## Crane Dangling Over West 57th Street

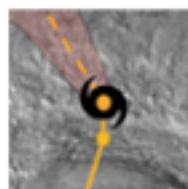
By ANDY NEWMAN 34 minutes ago

The boom on a crane at a luxury skyscraper under construction at 157 West 57th Street was collapsing.

## Interactive: Tracking Hurricane Sandy

Follow the storm's path and get local forecasts.

• Readers' Photos | Submit



## Live Images: View From Above

Watch the storm from the 51st floor of the Times building, with updates every minute.



## Storm Prompts Candidates to Curtail Campaigns

By MICHAEL D. SHEAR and MARK LANDLER 1:08 PM ET

President Obama returned to Washington, and Mitt Romney canceled campaign events through Tuesday.

UPDATES FROM @NYTMETRO ON TWITTER



kate zernike @kzernike

As #sandy nears landfall on the southern Jersey Shore, the power just went off here on the northern part, in Monmouth county. #Njsandy

3 minutes ago · Retweet · Like · Favorite

## The Opinion Pages

### ROOM FOR DEBATE

#### Monsters Vs. Sexy Nurses

Do racy Halloween costumes mask our fears of death?

### ANXIETY

#### My Monster, My Self

Eight artists depict and describe a monster that embodies their deepest or most irrational fear.



### OP-ED COLUMNISTS

- Krugman: Medicaid on the Ballot
- Keller: The No Agenda Myth

### MORE IN OPINION

- Editorial: Surveillance and Accountability
- Edsall: Billionaires Going Rogue
- Taking Note: Romney's New Auto Ad

### To Our Readers

The Times is providing free unlimited access to storm coverage on nytimes.com and its mobile apps.

• Markets in New York are closed because of the storm.

Get there fast.  
Get there first.  
DealB%k  
dealbook.nytimes.com

## A Times Digital Subscription MAKES A GREAT GIFT FOR ANY OCCASION



The New York Times

### TRAVEL >

#### Myths and Mountains in Nepal

A trek through the remote Mustang region reveals towering



#### Santa Fe by Bicycle

There are dozens of new bike trails and "bikeways" for those ready to discover Santa Fe on two wheels.

SUBSCRIBERS SAVE 50%



governor said.

The Holland and Brooklyn-Battery Tunnels closed earlier in the day.

For now, the Lincoln and Midtown Tunnels will remain open, along with the Robert F. Kennedy Bridge and the Bayonne, Goethals and Outerbridge crossings.

But he added, "If the winds continue to increase, and the weather conditions get worse, they can close on very, very short notice."

SHARE THIS POST ON: [Twitter](#) [Facebook](#)



## 4:07 pm Governor Cuomo News Conference

The New  
York Times



### Farmingdale Storm Update October 29, 2012

[livestream.com/newyorkstateofficeofthegovernor](http://livestream.com/newyorkstateofficeofthegovernor)



Watch [live streaming video](#) from [newyorkstateofficeofthegovernor](http://newyorkstateofficeofthegovernor) at [livestream.com](http://livestream.com)

SHARE THIS POST ON: [Twitter](#) [Facebook](#)

## 4:04 pm Atlantic City Official: 'City Is Under Siege'

N.R.  
Kleinfield



## Storm Conditions

Updated 4:40 PM ET

CITY	WIND SPEED	RAINFALL LAST DAY	TIME OF LAST OBSERVATION
Central Park	28 m.p.h.	0.22 in.	Mon. 3:51 PM
J.F.K. Airport	41 m.p.h.	0.35 in.	Mon. 3:51 PM
Islip, N.Y.	36 m.p.h.	0.63 in.	Mon. 3:56 PM
Atlantic City, N.J.	38 m.p.h.	4.57 in.	Mon. 3:54 PM
Georgetown, Del.	26 m.p.h.	3.23 in.	Mon. 3:54 PM





# The New York Times

Tuesday, October 30, 2012 Last Update: 11:41 PM ET

EXPLORE  
FESTIVE GIFTS
 Search
Orange Savings  
Account™

Follow Us

SAVE  
50%

Limited-time Sale: Subscribe &amp; Save | Personalize Your Weather

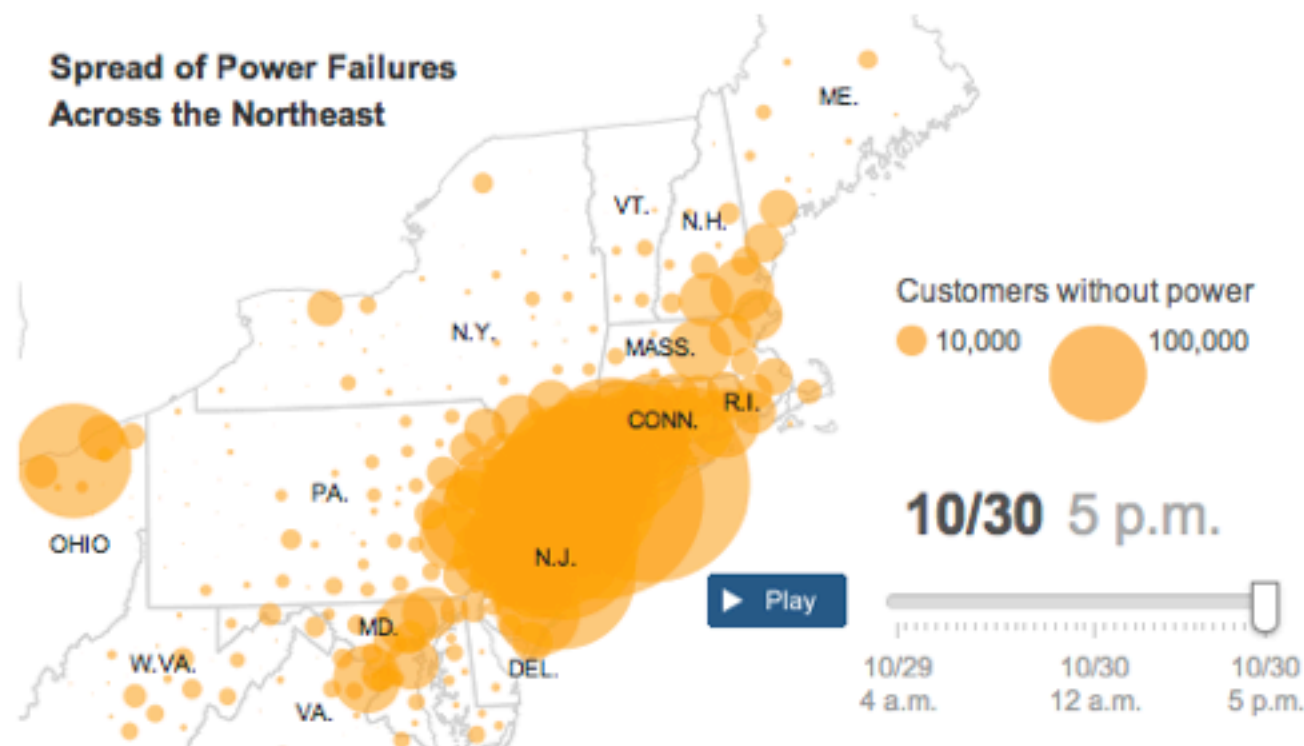
WORLD  
U.S.  
POLITICS  
NEW YORK  
BUSINESS  
DEALBOOK  
TECHNOLOGY  
SPORTS  
SCIENCE  
HEALTH  
ARTS  
STYLE  
OPINION

Autos  
Blogs  
Books  
Cartoons  
Classifieds  
Crosswords  
Dining & Wine  
Education  
Event Guide  
Fashion & Style  
Home & Garden  
Jobs  
Magazine  
Movies  
Music  
Obituaries  
Public Editor  
Real Estate  
Sunday Review  
T Magazine  
Television  
Theater  
Travel

## A DAUNTING RECOVERY

### Power Failures and Transportation Systems Crippled by Storm May Take Days to Repair

Spread of Power Failures  
Across the Northeast



Power Failures in the New York Region »

### Live Updates

**6:37 PM** New Jersey and New York Start to Address Price Gouging

**6:02 PM** A New York City

[MORE UPDATES »](#)

### Northeast Suffers Huge Damage in Storm's Path

#### Buses

Bus service is operating on a near normal schedule. [Current status via MTA.info.](#)

[View All »](#)

#### In Storm Deaths, Mystery, Fate and Bad Timing

By N. R. KLEINFELD and MICHAEL POWELL 9 minutes ago

In its howling sweep, the storm claimed at least 39 lives, expressing a full assortment of lethal methods.

#### Flames Destroy Scores of Homes in Queens Enclave

By SAM DOLNICK and COREY KILGANNON 8:42 PM ET

Few predicted that some of the worst destruction would come from a building fire.

### The Opinion Pages

#### EDITORIAL

##### Marriage on the Ballot

Voters in four states could make progress on equality for gay Americans.

#### OP-ED CONTRIBUTORS

##### Illogical Housing Aid

Mitt Romney's dad had the right idea on housing aid. His son should listen.



#### OP-ED COLUMNISTS

- Dowd: The 'I' of the Storm
- Friedman: Minnesota Mirror

#### MORE IN OPINION

- Campaign Stops: What Too Close to Call Really Means
- Letters: Hurricane Sandy
- Fixes: When Tragedy Strikes, Come Together
- Room for Debate: Would States Outperform FEMA?

#### To Our Readers

The Times is providing free unlimited access to storm coverage on nytimes.com and its mobile apps.

• Financial markets in New York are closed due to the storm.

[Get A Quote ▶](#)





# Tracking the Storm

FULL COVERAGE

COMMENTS

## HIGHLIGHTS

- 7:51 am Mass Transit in the New York Region
- 7:47 am New York City Traffic Report: Heavy
- 3:41 am Streets Calm Overnight, Police Say
- 11:46 pm 22 Deaths Reported in New York City
- 6:08 pm Con Ed Says Power Is Not Expected Back Before the Weekend

### 9:44 am With Mayor Ringing the Bell, Wall Street Gains

The New York Times

Mayor Michael R. Bloomberg rang the opening bell at the New York Stock Exchange on Wednesday to reopen trading on Wall Street after a historic two-day closing.

The Dow Jones industrial average added 0.4 percent as it came out of the gate.

Traders were expecting unusual volatility on pent-up demand. [Read more.](#)

SHARE THIS POST ON: Twitter Facebook

### 9:25 am Traffic Nightmare in Full Effect

Andy Newman

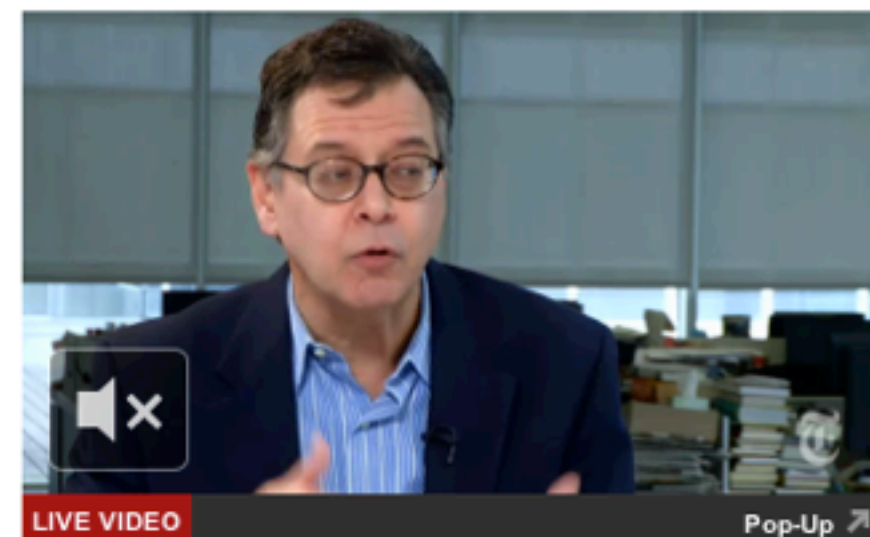


Brooklyn Spoke

@BrooklynSpoke

Follow

Here's the traffic heading into the city on 4th Avenue in Brooklyn right now. Just awful. [pic.twitter.com/CfMiE6AT](http://pic.twitter.com/CfMiE6AT)



## New York Area Services

Suspended Partial Operation Operating Normally

### NYC TRANSIT

- Taxis** Taxis allowed to pick up multiple passengers at multiple points. Livery cars can be hailed.
- Subways** Restoration likely to come in stages; no certain date for full service.
- Buses** Buses run on regular routes on Wednesday, but expect delays, detours and crowding.

### INSTITUTIONS

- N.Y. State Courts** Some courts in the Bronx and Queens will reopen Wednesday. Others remain closed.
- NYC Schools** Closed Wednesday.
- New York Public Library** The New York Public Library will remain closed on Wednesday.

### COMMUTER RAIL

- Long Island Rail Road** No opening estimated at this time.
- PATH** No service until further notice.



# New York Area Service Updates

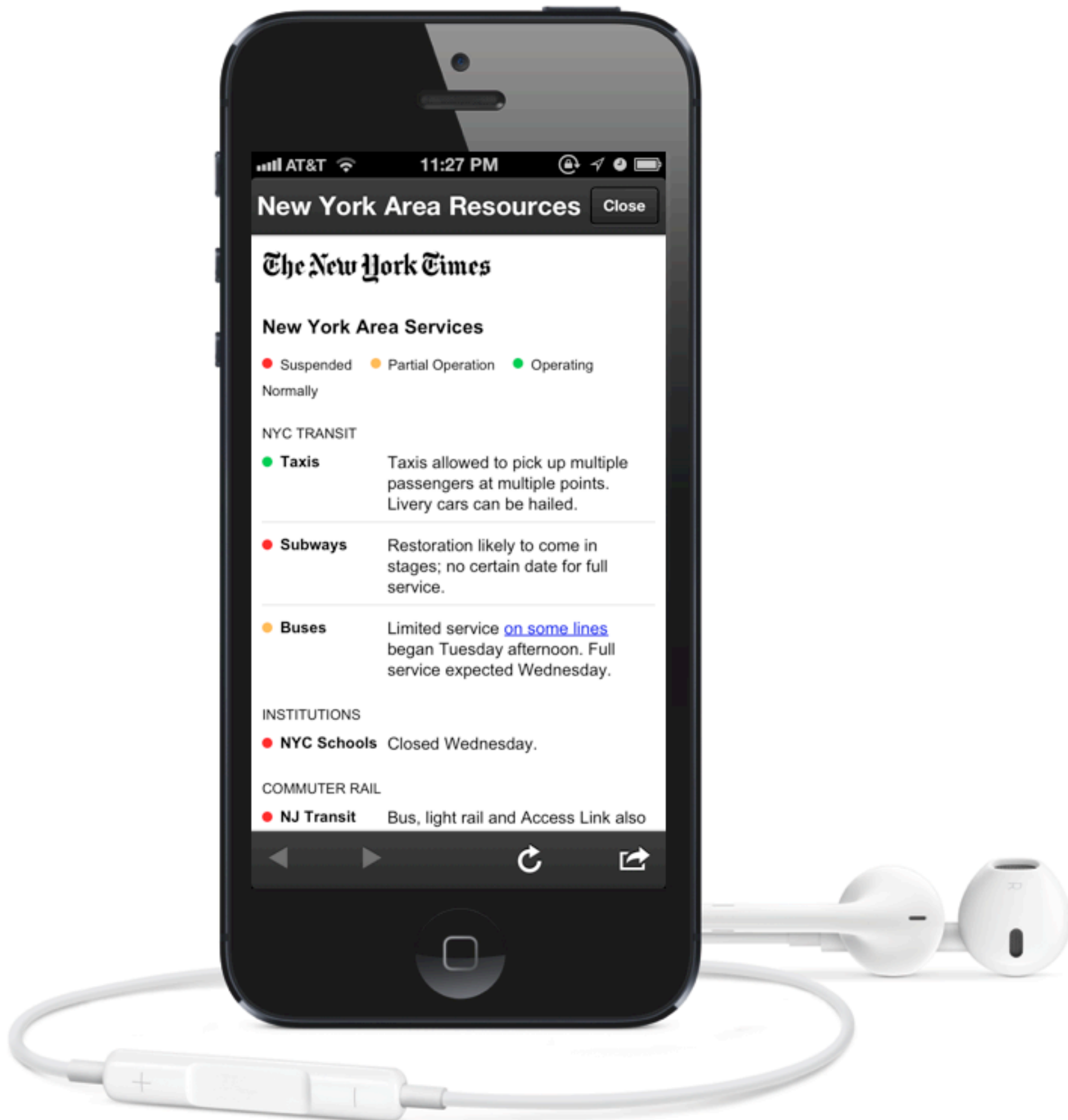
[NYC Transit](#)
[Commuter Rail](#)
[Bridges and Tunnels](#)
[Airports](#)
[Other Transportation](#)
[Institutions](#)

## NYC Transit

<b>PARTIAL</b>	<b>Buses</b>	<p>Buses run on regular routes on Wednesday, but expect delays, detours and crowding.</p> <p>Fares waived on Wednesday. Dedicated bus lanes will be created to help buses travel from Brooklyn into Manhattan on Thursday. For more information, visit the <a href="#">M.T.A. Web site</a>.</p>	<a href="#">MTA.info</a> <a href="#">@MTAInsider</a>
<b>SUSPENDED</b>	<b>Subways</b>	<p><a href="#">Limited service to return on Thursday at 6 a.m.</a>; no certain date for full service. (<a href="#">Map</a>)</p> <p>Service will be supplemented by buses between Manhattan and Brooklyn. No subway service below 34th Street in Manhattan because of a lack of electricity.</p>	<a href="#">MTA.info</a> <a href="#">@MTAInsider</a>
<b>NORMAL</b>	<b>Taxis</b>	<p>Taxis allowed to pick up multiple passengers at multiple points. Livery cars can be hailed.</p>	<a href="#">@NYCTaxi</a>

## Commuter Rail

<b>PARTIAL</b>	<b>Amtrak</b>	<p>Some Northeast Regional service <a href="#">resumed Wednesday</a>. Modified service to and from New York City was <a href="#">to begin Friday</a>.</p>	<a href="#">Amtrak service alerts</a> <a href="#">@AmtrakNEC</a>
<b>PARTIAL</b>	<b>Long Island Rail Road</b>	<p>Limited hourly service resumed at 2 p.m. on Wednesday.</p> <p>Shuttle buses from Barclays Center to Manhattan will run Thursday.</p>	<a href="#">MTA.info</a> <a href="#">@LIRRScoop</a>
<b>PARTIAL</b>	<b>Metro North</b>	<p>Limited service on the Lower Harlem Line at 2 p.m. on Wednesday.</p> <p>Hudson Line and New Haven Line remain suspended. For rush hour Thursday, regular service returns from Mt. Kisco to Grand Central Terminal on the Harlem Line and from Stamford to Grand Central Terminal on the New Haven Line.</p>	<a href="#">MTA.info</a> <a href="#">@MetroNorthTweet</a>
<b>PARTIAL</b>	<b>NJ Transit Rail</b>	<p>River Line light rail service resumed, mostly, 3 p.m. Wednesday.</p> <p>River Line service suspended between Walter Rand &amp; Entertainment</p>	



AT&T 11:27 PM

## New York Area Resources Close

### The New York Times

#### New York Area Services

● Suspended ● Partial Operation ● Operating

Normally

#### NYC TRANSIT

● **Taxis** Taxis allowed to pick up multiple passengers at multiple points. Livery cars can be hailed.

● **Subways** Restoration likely to come in stages; no certain date for full service.

● **Buses** Limited service [on some lines](#) began Tuesday afternoon. Full service expected Wednesday.

#### INSTITUTIONS

● **NYC Schools** Closed Wednesday.

#### COMMUTER RAIL

● **NJ Transit** Bus, light rail and Access Link also

<div>EDIT</div>	<div>EDIT</div> <div>Category</div> <div>(Text)</div>	<div>EDIT</div> <div>Title</div> <div>(Text)</div>	<div>EDIT</div> <div>Status</div> <div>(Text)</div>	<div>EDIT</div> <div>Short Summary</div> <div>(Text)</div>	<div>EDIT</div> <div>Expanded</div> <div>(Text)</div>	<div>EDIT</div> <div>ExternalLinks</div> <div>(Text)</div>
<div>EDIT</div> 0	Utilities <div>EDIT</div>	Electricity New York City <div>EDIT</div>	Yellow <div>EDIT</div>	Visit <a href="#">Con Edison's Web site</a> or see their <a href="#">interactive map of outages</a> .  <a href="#">Rockland Electric Company and Pike County Light &amp; Power Co.</a> <div>EDIT</div>	<div>EDIT</div>	<a href="#">@ConEdison</a> <a href="#">@ORUConnect</a> <div>EDIT</div>
<div>EDIT</div> 1	Utilities <div>EDIT</div>	Water <div>EDIT</div>	Green <div>EDIT</div>	New York City tap water is safe to drink. <div>EDIT</div>	<div>EDIT</div>	<div>EDIT</div>
<div>EDIT</div> 2	Utilities <div>EDIT</div>	Electricity New Jersey <div>EDIT</div>	Yellow <div>EDIT</div>	<a href="#">PSE&amp;G.com</a> <div>EDIT</div> <a href="#">Jersey Central Power and Light</a>  <a href="#">Atlantic City Electric</a>  Check outages on <a href="#">PSEG's interactive</a> as well as outages on <a href="#">Jersey Central Power and Light's</a> map.	<div>EDIT</div>	<div>EDIT</div>
<div>EDIT</div> 3	Utilities <div>EDIT</div>	Electricity Long Island <div>EDIT</div>	Yellow <div>EDIT</div>	Visit <a href="#">Long Island Power Authority's Web site</a> or check their <a href="#">outage map</a> . <div>EDIT</div>	<div>EDIT</div>	<a href="#">@LIPAnews</a> <div>EDIT</div>
<div>EDIT</div> 4	Utilities <div>EDIT</div>	Electricity Connecticut <div>EDIT</div>	Yellow <div>EDIT</div>	Visit Connecticut Light and Power's <a href="#">Web site</a> or check their <a href="#">outage map</a> . <div>EDIT</div>	<div>EDIT</div>	<a href="#">@CTLightandPower</a> <div>EDIT</div>
<div>EDIT</div> 5	NYC Transit <div>EDIT</div>	<div>EDIT</div>	<div>EDIT</div>	<div>EDIT</div>	<div>EDIT</div>	<div>EDIT</div>
<div>EDIT</div> 6	NYC Transit <div>EDIT</div>	Subways <div>EDIT</div>	Yellow <div>EDIT</div>	<a href="#">Service Status via MTA.info</a> . <div>EDIT</div>	<div>EDIT</div>	<a href="#">@MTAInsider</a> <div>EDIT</div>
<div>EDIT</div> 7	NYC Transit <div>EDIT</div>	Buses <div>EDIT</div>	Yellow <div>EDIT</div>	Bus service is operating on a near normal schedule. <a href="#">Current status via MTA.info</a> . <div>EDIT</div>	<div>EDIT</div>	<a href="#">@MTAInsider</a> <div>EDIT</div>
<div>EDIT</div> 8	NYC Transit <div>EDIT</div>	Taxis <div>EDIT</div>	Green <div>EDIT</div>	Normal rules have resumed. <div>EDIT</div>	<div>EDIT</div>	<a href="#">@NYCTaxi</a> <div>EDIT</div>
<div>EDIT</div> 9	Emergency Supplies <div>EDIT</div>	Food and Water <div>EDIT</div>	<div>EDIT</div>	A <a href="#">list of emergency food and water</a> via nyc.gov. <div>EDIT</div>	<div>EDIT</div>	<a href="#">@NotifyNYC</a> <div>EDIT</div>
<div>EDIT</div> 10	Commuter Rail <div>EDIT</div>	NJ Transit Rail <div>EDIT</div>	Yellow <div>EDIT</div>	More information on <a href="#">NJtransit.com</a> . <div>EDIT</div>	<div>EDIT</div>	<div>EDIT</div>
<div>EDIT</div> 11	Commuter Rail <div>EDIT</div>	PATH <div>EDIT</div>	Yellow <div>EDIT</div>	More information on <a href="#">Port Authority of New York and New Jersey</a> . <div>EDIT</div>	<div>EDIT</div>	<a href="#">@PATHTweet</a> <div>EDIT</div>
<div>EDIT</div> 12	Commuter Rail <div>EDIT</div>	Long Island Rail Road <div>EDIT</div>	Yellow <div>EDIT</div>	More information on <a href="#">MTA.info</a> . <div>EDIT</div>	<div>EDIT</div>	<a href="#">@LIRRScoop</a> <div>EDIT</div>
<div>EDIT</div> 13	Commuter Rail <div>EDIT</div>	Metro-North <div>EDIT</div>	Yellow <div>EDIT</div>	Check here for details <div>EDIT</div>	<div>EDIT</div>	<div>EDIT</div>



# Social Media and Hurricane Sandy

NYU Rudin Center for Transportation

November 27, 2012