

2009 | ANNUAL
2010 | REPORT



RUDIN CENTER FOR TRANSPORTATION POLICY & MANAGEMENT

NYUWagner

Robert F. Wagner Graduate School of Public Service



NYUWagner
**rudin
center**
for transportation policy & management

▶▶ ADVISORY BOARD

Mark Bodden, Rudin Foundations
Tonio Burgos, Tonio Burgos and Associates, Inc.
Mortimer L. Downey III, Mort Downey Consulting, LLC
Douglas Durst, The Durst Organization
Robert E. Furniss, Bombardier Transportation
MaryAnne Gilmartin, Forest City Ratner Cos.
Jerry Gottesman, Edison Properties
Susan Hayes, Cauldwell-Wingate
Michael Kutsch, Cubic Transportation
Greg Kelly, Parsons Brinckerhoff
Stephen Lefkowitz, Fried Frank
Michael McNally, Skanska
James Melius, NYS Laborers' Employers' Cooperation and Education Trust Fund
Robert Paaswell, CCNY
Denise Richardson, General Contractors Association
Stan Rosenblum, Jacobs Engineering
Eric Rothman, HR&A Advisors, Inc.
Elliot Sander, AECOM
Dominic Servedio, STV
Robert Stromsted, P.E., HNTB
Iris Weinshall, City University Construction Fund

▶▶ MISSION

The Rudin Center creates and disseminates new ideas in transportation policy and planning that will foster greater economic development and opportunity in a more sustainable and just society. The Center works with public, private and non-profit partners in supporting innovative research, convening thinkers and policy-makers from around the region and the world, and training students and leaders in the field. It seeks to focus attention on the linkages between transportation policy and other critical regional and national issues such as housing, economic development, energy security, health care, and education.

Established in 1996, the Center was named in September 2000 in recognition of a generous gift from civic leader Lewis Rudin.



RUDIN CENTER FOR TRANSPORTATION POLICY & MANAGEMENT



TABLE OF CONTENTS

From the Dean.....	2
From the Executive Director.....	3
Research.....	4
Education.....	7
Service.....	9
Speakers.....	12
Events.....	14
Affiliated Faculty.....	15
Center Staff and Project Sponsors.....	16



As the Robert F. Wagner Graduate School of Public Service nears its 73rd year, widely recognized as one on the nation’s premier academic programs in public policy, planning, and management, we are proud to see that the Rudin Center has become one of the leading transportation policy research centers in the nation. Founded more than a decade ago and named after New York business-leader and philanthropist Lewis Rudin, the Center has come to embody so many of the School’s core values.

Wagner has always been a school that focuses on how rigorous theory can inform good practice and how an understanding of the realities of policy and planning can make scholarship richer and more relevant. Our faculty and students are heavily invested in strengthening the linkages between the academy and the real world of public, non-profit, and private sector management. The Rudin Center has evolved into an illustration of just how powerful that connection can be.

Just as importantly, the Center’s new focus on the inter-relationships between transportation and other core policy areas where Wagner has demonstrated excellence — urban planning, health care, economic development, housing, and sustainability — put the Center at the very heart of the School’s mission. We are very proud of how the Center has grown in depth and breadth, how it has become a central element in the School’s broader inter-disciplinary strategy, and most of all, how its commitment to education, research and service mirrors the diversity of endeavor that drives the Wagner School and New York University. Anthony Shorris, the Rudin Center’s Executive Director, has brought extraordinary leadership and vision to his role at Rudin as well as to the overall Wagner Community.

I hope you will enjoy this Annual Report as I have, not only because of the many accomplishments of 2009-10 that it highlights, but more importantly, because of the great future it portends for this growing institution.

Sincerely,

Ellen Schall
Dean

Since the Rudin Center was founded in 1996, much has changed in our rapidly globalizing world. At the core of our work is a recognition that the increasing inter-connectedness of the region, nation and world represents great challenges — as evidenced by the quick and devastating spread of the financial crisis — as well as opportunities.

The Rudin Center recognizes that the new promises and vulnerabilities of our interwoven world can only be understood using the many disciplinary lenses of politics, economics, sociology, and psychology as well as the more traditional tools of planning and engineering. Our goal is to create the nation’s leading enterprise of research, teaching, and service focused on how transportation can advance the great social goals of security, economic opportunity, sustainability, and social justice. We see transportation not as an end in itself, but rather as an essential means to advance the fundamental ambitions of society.

In striving for this goal, we are strengthened by our setting in a distinguished school of public service that is part of one of the world’s great global universities. Our staff is talented and growing each year, turning abstract notions into new research, educational programs, and public service. We have a broad and expanding Advisory Board that provides crucial support for our work, and a nationally-renowned group of scholarly advisors who guide our thinking. To all of them — and to the public, private, and non-profit organizations with whom we partner — I offer our deepest thanks for their continuing support.

The past year was a great one for the Rudin Center, earning us recognition from former President Bill Clinton and so many others. Thousands of students, scholars and practitioners attended our events and read our publications and new research, while hundreds of others benefited from our educational programming and public service efforts. But if we are to take advantage fully of the gifts of support we have been offered and address the great challenge we have set for ourselves, we have much work ahead.

Next year promises to be even richer — we have planned major new initiatives in education, research, and public service. With so much to be done, and such a strong foundation now in place, I welcome you to join us in the great venture ahead.

Sincerely,

Anthony E. Shorris
Executive Director



Letter from the Executive Director



RESEARCH



The Rudin Center has a reputation for pursuing and supporting the exploration of cutting-edge and cross-disciplinary topics, conducting research on topics as diverse as the value of public participation initiatives in transit agencies, best practices for context-sensitive solutions in urban planning, and the potential impact of Urban Distribution Centers in the New York region. During the past year the Center has increased not only the quantity of its research projects but also the variety of venues in which new work is showcased; the new Working Papers series, presentations by young scholars, and a peer-reviewed journal all join the Center's established research agenda. Together these offerings create a rich set of resources for the broader transportation, planning and public policy communities, in formats ranging from intimate conversations to a nationally-disseminated periodical.

WORKING PAPERS SERIES

The Rudin Center's new Working Papers series features work by affiliated faculty and scholars, as well as newly commissioned research associated with the Center's symposia and other events. The 2009-2010 Working Papers include:

RCWP 10-001: *Causality vs. Correlation: Rethinking Research Design in the Case of Pedestrian Environments and Walking*

Zhan Guo, Assistant Professor of Urban Planning and Transportation Policy, New York University Wagner Graduate School of Public Service

RCWP 10-002: *Developing a Regional Bus Rapid Transit Network in the New York Metropolitan Area*

Elizabeth Deakin, Professor of City and Regional Planning and Urban Design, University of California at Berkeley

RCWP 10-003: *Bus Rapid Transit Opportunities for the New York Region*

Herbert Levinson, Icon Mentor and Professor Emeritus of Transportation, UTRC and City College of New York, CUNY

RCWP 10-004: *Minimum Parking Requirements, Transit Proximity and Development in New York City*

Simon McDonnell, Josiah Madar and Vicki Been, Furman Center for Real Estate and Urban Policy at New York University

RCWP 10-005: *Reusing and Repurposing New York City's Infrastructure: Case studies of Reused Transportation Infrastructure*

Galin Brooks, New York University Wagner School of Public Service

TRANSPORTATION & THE ENVIRONMENT

Transportation sources account for 29 percent of total U.S. greenhouse gas (GHG) emissions. Transportation is the fastest-growing source of GHGs in the U.S., accounting for 47 percent of the net increase in total U.S. emissions since 1990.

Environmental Protection Agency



If each resident of an American community of 100,000 replaced one car trip with one bike trip just once a month, it would cut carbon dioxide (CO₂) emissions by 3,764 tons of per year in the community.

Complete Streets Coalition

STAFF RESEARCH

The Center continues to win a range of grant monies and private funding each year to support staff research on local, regional, national and international issues of concern to transportation and urban policy scholars and students. Among our 2009-10 research efforts are the following:

- › Assessing the Performance of Mega-projects
- › Best Practices for Context Sensitive Solutions in Urban Areas
- › Defining the Shared Goals of the NYMTC Principals and Related Future Trends
- › Evaluating the Implementation and Impact of MTA Public Participation Initiatives
- › Feasibility of Freight Villages in the NYMTC Region
- › Integrative Freight Demand Management in the New York City Metropolitan Area: Institutional Analyses and Coordination
- › Mobile Source Air Toxics (MSATs) Mitigation Measures
- › Pedestrian Fatality and Severe Injury Crashes in New York City
- › Pedestrian Safety and Potential High-Risk Groups in Large Central Cities: Issues, Tools, and Policy
- › Urban Distribution Centers: A Means for Reducing Freight VMT?

STAFF RESEARCH HIGHLIGHTS:

Assessing the Performance of Mega-projects. This research is part of an international study coordinated by the Global Centre for Mega Urban Transportation Studies at University College London. Rudin is contributing three case studies from the U.S. that will be compared to studies from ten other countries, resulting in a total of 33 case studies over the course of five years. Rudin's selected cases are the AirTrain to JFK, the Big Dig in Boston and the Alameda Corridor in California.

Urban Distribution Centers (UDCs): A Means of Reducing Freight VMT? UDCs are relatively recent innovations in the freight industry and this project, sponsored by the New York State Energy Research and Development Authority, explores the feasibility of using them to reduce vehicle miles traveled (VMT) in the New York Metropolitan area. UDCs have been used mainly in Europe and Japan, and Rudin is examining the model to understand how they could best be designed to reduce VMT in the New York region.

**NEW THINKING ON
TRANSPORTATION AND
SOCIETY: DOCTORAL
RESEARCH SERIES**

The inaugural year of the New Thinking on Transportation and Society Doctoral Research Series was a tremendous success, engaging hundreds of students, faculty members, and transportation practitioners across seven substantive sessions on a diverse range of subjects. Scholars from UCLA, MIT, Rutgers, USC, NYU and UC Berkeley presented important early research findings and received recognition for their provocative work.

The series provides an informal setting in which leading young scholars from across the nation, nominated by their faculty advisors, have an opportunity to present their current dissertation research on cutting-edge transportation planning matters and connect with other doctoral and masters students, as well as faculty and alumni, in a meaningful discussion of their work. The talks highlight the practical use of transportation policy and planning for addressing complex real world challenges and also provide an important venue for the intellectual community of researchers working in related fields. Competition for the series, which is hosted jointly by Rudin and the City University of New York's University Transportation Research Center, continues to intensify as it gains prominence across the academic community. The 2009-10 presentations were:

- Andrew Mondschein**, UCLA, *Cities in Mind: Processes and Access to Opportunity*
- Nicholas Klein**, Rutgers University, *Private Transit Services in Immigrant Communities*
- Yang Chen**, MIT, *Neighborhood Design and the Energy Efficiency of Urban Lifestyle in China: Treating Residence and Mobility as Lifestyle Bundle*
- Jen Petersen**, NYU, *Whose Streets? Paving the Right to the City*
- Lingqian Hu**, University of Southern California, *Urban Spatial Transformation and Job Accessibility: Spatial Mismatch Hypothesis Revisited*
- Mike Smart**, UCLA, *Immigrant Enclaves and Travel Behavior*
- Gian-Claudia Sciara**, UC Berkeley, *Planners and the Pork Barrel: Metropolitan Engagement in and Resistance to Congressional Transportation Earmarking*

**JOURNAL OF
TRANSPORTATION
AND SOCIETY**

The Center is now preparing for the Fall 2010 launch of the *Journal of Transportation and Society*, a rigorous, peer-reviewed, semi-annual academic publication focused on research around the intersections of transportation and other policy arenas. Designed to be multi-disciplinary in its focus, we are assembling an unusual editorial board of scholars from diverse perspectives to review articles and help guide the new journal's direction. Already, some of the nation's leading scholars have signed up to help the nascent publication, including: Marlon Boarnet (UC Irvine), Ingrid Ellen (NYU), José Gomez-Ibañez (Harvard), Zhan Guo (NYU), Karen Polenske (MIT), John Quigley (UC Berkeley), Martin Wachs (Rand), and Rachel Weinberger (UPenn).

**TRANSPORTATION &
HOUSEHOLD SPENDING**

Americans spent an average of 19 cents of every dollar on transportation, with the poorest fifth of families spending more than double that figure.

U.S. Department of Labor, Bureau of Labor Statistics



Households that are likely to use public transportation on a given day save over \$8,400 every year.

American Public Transportation Association

EDUCATION



The Center is committed to sharing innovative ideas and best practices, using its distinctive position at the intersection of transportation and other disciplines and its access to current and future leaders to promote innovation and progress in the field.

EXECUTIVE DEVELOPMENT

Designed for mid-level transportation agency personnel identified as having high career potential, the Rudin Center's Executive Development Program, now in its eleventh year, focuses on transportation management, policy, operations, and planning. This joint effort with the New York Metropolitan Transportation Council has brought in seasoned transportation professionals from agencies throughout the region to share their expertise and experience. In addition to providing students with a year-long curriculum, this highly successful program has advanced the careers of more than 200 future leaders by fostering informal inter-agency relationships among participants and promoting greater inter-agency cooperation and exchange of best practices within the field.

ADVANCED DEGREE COURSES

The Rudin Center's location at the Wagner School is critical to its ability to inform and interact with up-and-coming transportation professionals enrolled in masters programs in policy and urban planning. Courses offered to students by our faculty include *Leveraging Transportation Planning for Social Policy*, *Crisis Management*, *Transportation Policy*, and *Adapting the Physical City: Innovations in Energy, Transportation, and Water and Urban Transportation Planning*. As part of the Region II University Transportation Research Council Consortium, Wagner students can avail themselves of classroom resources at other member universities throughout the region.

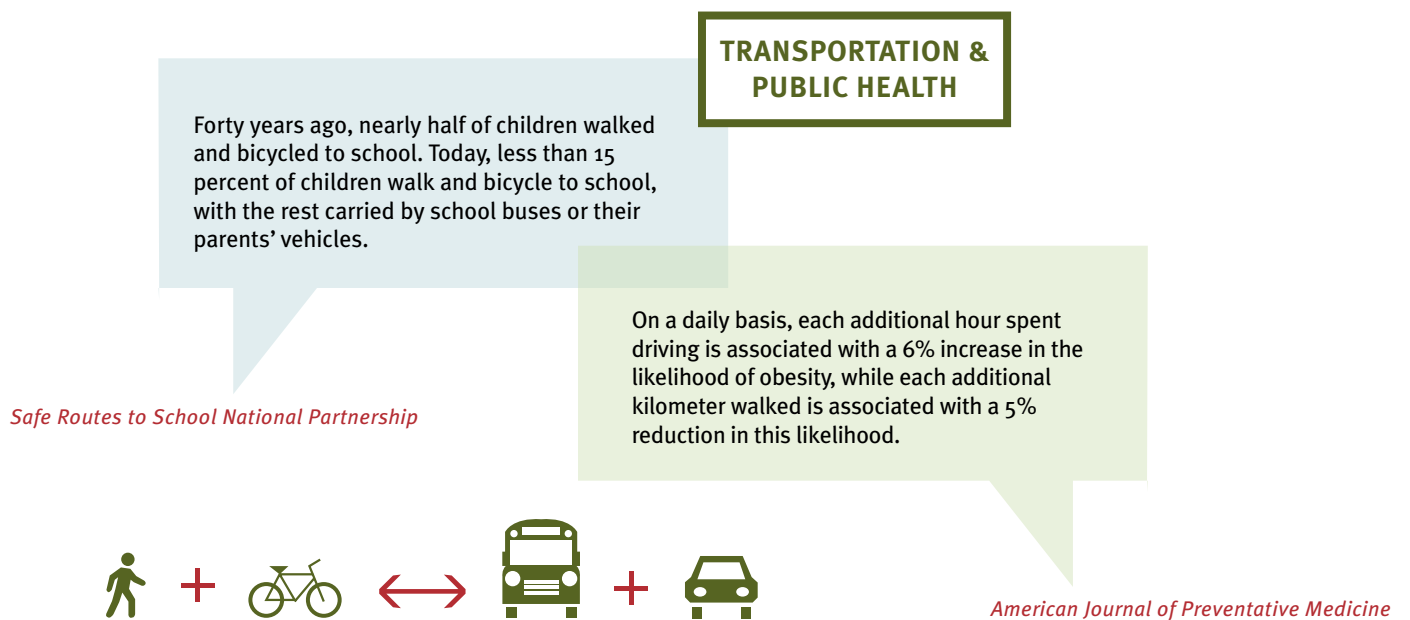
WORKSHOPS FOR MEMBERS OF NACTO | **(National Organization of City Transportation Officials)**

Implementing Bus Rapid Transit in North American Cities

The Rudin Center, in coordination with NACTO, is presenting a series of peer-to-peer workshops on Bus Rapid Transit (BRT). The goal of this effort is to provide an opportunity for representatives from a range of large cities to share information about the various BRT and bus running way challenges they face and the solutions that they have developed in response. These workshops are organized thematically around issues in three cities across the nation; the first, held in New York City in April 2010, will be followed by gatherings in Los Angeles and Cleveland. Participants benefit from practitioner-oriented discussions complemented by presentations and advice from experts in various relevant disciplines.

Safer Streets: How to Effectively Locate and Design Pedestrian Safety Projects Given New Findings on Potential High-Risk Groups

Funded by the Federal Highway Administration (FHWA), the Center is investigating pedestrian safety issues related to the needs and challenges associated with high-risk population groups identified in the initial phases of the study. The Center is organizing a peer-to-peer workshop to be hosted at NYU with current NACTO members, as well as officials from several non-NACTO cities included in the study. The purpose of the workshop is to share new findings on pedestrian safety and high-risk populations, recommended practices and performance measures for planning, and discuss policies and programs that would improve pedestrian safety for high-risk populations.



SERVICE



*Hon. Richard Ravitch,
Lt. Governor, State of New York*

At the core of the Center’s mission is an understanding that in order to achieve a more sustainable and just society, leaders from across the transportation community and beyond must be engaged in an ongoing exchange of ideas in order to identify and enact innovative solutions to our most difficult challenges. Through its programming, Rudin puts a spotlight on major accomplishments and advancements in the field, creates the opportunity for experts to share their knowledge, and encourages the germination of new thinking. Rudin Center events drew thousands of guests during the past year, a new record of attendance that will undoubtedly broaden the impact of the ideas put forth.

EVENTS

THINKING AND DOING BREAKFAST SERIES

These events pair current New York area policy leaders and practitioners with top academic thinkers to discuss challenging transportation topics in an effort to bridge the gap between theory and practice. The series, which draws hundreds of guests annually, has featured speakers such as New York State Lieutenant Governor Richard Ravitch, High Line founder and Executive Director Robert Hammond, NYC Transportation Commissioner Janette Sadik-Khan, and the New York Region’s EPA Administrator Judith Enck among others.

SYMPOSIUM

Hundreds of policy-makers, business leaders, and scholars attend symposia presented by the Center throughout the year. These events feature high level transportation executives, senior government officials, and business and industry leaders.

Performance-Driven: A New Vision for U.S. Transportation Policy

Co-hosted with the Bipartisan Policy Center's National Transportation Policy Project in January 2010, this event addressed recommendations for revitalizing America's surface transportation system. We were joined by federal, state and local elected and appointed officials as well as policy advocates, including Deputy Administrator Greg Nadeau of the Federal Highway Administration, New York State's Senior Advisor for Infrastructure and Transportation Timothy Gilchrist, Connecticut Transportation Commissioner Joseph Marie, Kate Slevin of the Tri-State Transportation Campaign, and the Regional Plan Association's Robert Yaro.

Catching the Next Ride – The Potential for Regional Bus Rapid Transit Systems

In February 2010, the Rudin Center co-hosted this event with the New York Metropolitan Transportation Council and co-sponsor UTRC. This symposium convened key transportation leaders such as Deputy Administrator Therese McMillan of the Federal Transit Administration, Los Angeles Director of Regional Transit Planning Rex Gephart, New Jersey Transit's Chief Planner Richard Roberts, William Wheeler, Director of Special Project Development & Planning at the Metropolitan Transportation Authority, as well as officials from Chicago and Washington DC. Together they discussed the potential for implementation of regional Bus Rapid Transit (BRT) systems in the New York metropolitan area.

High-Speed Rail: Leveraging Federal Investment Locally

Following the January 2010 rail funding announcement by the U.S. Department of Transportation, interest in rail investment – and what it means for American communities – has continued to expand. In focusing on how to implement new rail corridors there is a risk of overlooking the need to manage the regional impacts of the nodes that comprise these systems. The June 2010 symposium enhanced the national dialogue on high-speed rail investment through a focus on how new facilities can be linked to existing regional transportation systems and used to enhance regional economic development. In addition, an examination of the political context of establishing new rail infrastructure in a democratic nation drew lessons from the European experience. The event featured Polly Trottenberg, Assistant Secretary for Transportation Policy at the U.S. Department of Transportation, Professor David Levinson from the University of Minnesota and Frank Zshoche, who assisted the U.K.'s Department for Transport in its recent study of high-speed rail among others.

TRANSPORTATION & THE ECONOMY

Every dollar communities invest in public transportation generates approximately \$4 in economic returns.

American Public Transportation Association

America is currently investing only 2.4% of gross domestic product (GDP) in infrastructure, in comparison to 5% in Europe and 9% in China.

World Bank



TRANSPORTATION & THE AGING

54% of older adults who reported an inhospitable walking, bicycling, and transit environment outside their homes would walk, bicycle, and take transit more if those problems were fixed.

AARP Public Policy Institute.

Eight of ten of older Americans surveyed consider that “for many seniors, public transportation is a better alternative to driving alone, particularly at night.”



American Public Transportation Association

ANNUAL RECEPTION

Each year, the Center honors outstanding contributions to the field of transportation policy and management. In 2009, Rudin paid tribute to Mortimer L. Downey III, former Deputy Secretary of the U.S. Department of Transportation. Past honorees include Hon. Mayor Michael Bloomberg, the president of Amtrak, the president of the Regional Plan Association, and the teams behind transformative projects such as the MTA’s smartcard pilot and the Trans-Hudson Express Tunnel.

MTA UNCONFERENCE FOR DEVELOPERS

To foster collaboration between the MTA and the software developer community, Google hosted an MTA “unconference” for software developers at their Manhattan office on May 5, 2010, in partnership with the Rudin Center, the *New York Times* and OpenPlans. New MTA data sets were released and data representatives from the MTA’s operating agencies were on hand to answer questions. Speakers included: Jay Walder, Chairman and CEO, MTA; Derek Gottfrid, Senior Software Architect / Product Technologist, The New York Times; Bernhard Seefeld, Senior Product Manager, Google Maps; Nick Grossman, Director of Civic Works, OpenPlans (formerly The Open Planning Project); and Anil Dash, Entrepreneur and Director of Expert Labs.



Jay Walder,
Chairman and CEO, MTA

THE NEW YORK TRANSPORTATION JOURNAL



The *New York Transportation Journal* has long been a respected periodical, reaching over 4,000 leading transportation planners, researchers, and government officials. In Fall 2009, the Center launched the Journal in a totally revamped, online format that reaches an even wider audience and offers the same coverage of transportation issues with additional multimedia materials and dynamic content. Among the new features are *Mind the Gap*, which showcases debate on the key policy issues facing the nation, and *New Voices*, featuring the work of tomorrow’s transportation leaders.



2009-2010 SPEAKERS

From the Academy

Asaf Ashar, Research Professor, University of New Orleans and National Ports & Waterways Institute

Hilary Ballon, Professor of Urban Studies and Architecture, NYU Wagner

Charles Brecher, Professor of Public and Health Administration, NYU Wagner

Joan Byron, Director of Sustainability and Environmental Justice Initiative at the Pratt Center for Community Development

Maria Damon, Assistant Professor of Public Policy and Assistant Professor of Environmental Studies, NYU Wagner

Elizabeth Deakin, Professor of City and Regional Planning and Urban Design, University of California at Berkeley

Harry Dimitriou, Bartlett Professor of Planning Studies, University College, London

Ingrid Gould Ellen, Professor of Urban Planning and Public Policy, NYU Wagner

Zhan Guo, Assistant Professor of Urban Planning and Transportation, NYU Wagner

David Holland, Professor of Mathematics, Courant Institute of Mathematical Sciences; Director, Center for Atmosphere Ocean Science, NYU

George Kocur, Senior Lecturer, Massachusetts Institute of Technology

David Levinson, RP Braun/CTS Chair in Transportation Engineering and Director of the Networks, Economics, and Urban Systems (NEXUS) research group, University of Minnesota

Herbert Levinson, Icon Mentor and Professor Emeritus of Transportation, UTRC and City College of New York, CUNY

Mitchell Moss, Henry Hart Rice Professor of Urban Policy & Planning, NYU Wagner

Peter O'Reilly, Director, Telecommunication Systems Management Program, Northeastern University

Anthony Perl, Professor and Director of Urban Studies, Simon Fraser University

Donald Shoup, Professor of Urban Planning, UCLA

Alan Zerkin, Adjunct Professor of Public Administration, NYU Wagner

From the Nonprofit Sector

Cecil Corbin-Mark, Director of Policy, We Act

Emil Frankel, Director of Transportation Policy, Bipartisan Policy Center

Robert Hammond, co-founder and Executive Director of the High Line

Walter Hook, Executive Director of the Institute for Transportation and Development Policy and co-editor of the Bus Rapid Transit Planning Guide

JayEtta Hecker, Director of Transportation Advocacy, Bipartisan Policy Center

Bob Pleasure, Special Assistant to the President, Building & Construction Trades Department, AFL-CIO

Joshua Schank, Director of Transportation Research, Bipartisan Policy Center

Kate Slevin, Executive Director, Tri-State Transportation Campaign

Robert Yaro, President, Regional Plan Association

Jeffrey Zupan, Senior Transportation Fellow, Regional Plan Association



*Robert Hammond,
Executive Director, High Line*



*Donald Shoup,
Professor, UCLA*



*Peter Rogoff,
Administrator, Federal Transit Administration*



*Janette Sadik-Khan,
Commissioner, NYC DOT*

From the Public Sector

- Tunde Balvanyos**, Bus Rapid Transit Coordinator, Pace Suburban Bus, IL
- William Baroni**, Deputy Executive Director, Port Authority of New York and New Jersey
- Joseph Barr**, Director of Transit Development, New York City Department of Transportation
- Diana Beecher**, Chief Information Officer, Port Authority of New York and New Jersey
- Nat Bottigheimer**, Assistant General Manager, Planning and Joint Development,
Washington Metropolitan Area Transit Authority
- Christopher Boylan**, Deputy Executive Director, Metropolitan Transportation Authority
- Sherwood Boehlert**, Former U.S. Congressman and NTPP Co-Chair
- Judith Enck**, Administrator of Region 2 of the U.S. Environmental Protection Agency
- Joel Ettinger**, Executive Director, New York Metropolitan Transportation Council
- Rex Gephart**, Director, Regional Transit Planning, Los Angeles County Metropolitan
Transportation Authority
- Timothy Gilchrist**, Senior Advisor for Infrastructure and Transportation, New York State
- Sandy Hornick**, Deputy Executive Director, New York City Department of City Planning
- Amy Linden**, Senior Director, New Fare Payment Systems, Metropolitan Transportation Authority
- Joseph Marie**, Commissioner, Connecticut Department of Transportation
- Therese McMillan**, Deputy Administrator, Federal Transit Administration
- Mary K. Murphy**, Executive Director, North Jersey Transportation Planning Authority
- Gregory G. Nadeau**, Deputy Administrator, Federal Highway Administration
- U.S. Congressman Jerrold Nadler**
- Seth Pinsky**, President of the New York City Economic Development Corporation
- Hon. Richard Ravitch**, New York State Lieutenant Governor
- Richard Roberts**, Chief Planner, New Jersey Transit
- Peter Rogoff**, Administrator, Federal Transit Administration
- Janette Sadik-Khan**, Commissioner, New York City Department of Transportation
- Bruce Schaller**, Deputy Commissioner, New York City Department of Transportation
- Polly Trottenberg**, Assistant Secretary for Policy, U.S. Department of Transportation
- Hon. Scott Vanderhoef**, County Executive, Rockland County
- Shashi Verma**, Director of Fares and Ticketing, Transport for London
- Alex Washburn**, Director of Urban Design New York City Department of City Planning
- William Wheeler**, Director of Special Project Development & Planning, Metropolitan
Transportation Authority

From the Private Sector

- David Carol**, Vice President, High Speed Rail, Parsons Brinckerhoff
- Mortimer L. Downey III**, Mort Downey Consulting, LLC
- Donald J. Emerson**, Principle Consultant, Parsons Brinckerhoff, PB Strategic Consulting
- Jeffrey D. Ensor**, Consultant, Parsons Brinckerhoff, PB Strategic Consulting
- Elliot Sander**, Chief Executive, Global Transportation, AECOM
- Michael J. Wilson**, Senior Executive / Partner, Accenture - Public Service Operating Group
- Samuel Zimmerman**, Consultant to the World Bank
- Frank Zshoche**, Managing Director of Civity Management Consultants, Hamburg, Germany



2009-2010 EVENTS

Thinking and Doing: Policy Makers Meet Policy Researchers

The Story of the Highline (September 30, 2009)

Funding Mass Transit (October 28, 2009)

World-Class Streets for a World City (November 25, 2009)

Parking Reform and Land Use Planning (January 22, 2010)

Economic Development in New York City: Linking Physical and Economic Transformation
(February 17, 2010)

Building Sustainable Communities: The EPA Agenda (April 14, 2010)

Symposia and Conferences

Performance Driven: A New Vision for U.S. Transportation Policy (January 25, 2010)

Catching the Next Ride: The Potential for Regional Bus Rapid Transit Systems (February 24, 2010)

High Speed Rail: Leveraging Federal Investment Locally (June 16, 2010)

New Thinking on Transportation and Society: Doctoral Research Series

Cities in Mind: Processes and Access to Opportunity (October 23, 2009)

Private Transit Services in Immigrant Communities (November 13, 2009)

Neighborhood Design and the Energy Efficiency of Urban Lifestyle in China:

Treating Residence and Mobility as Lifestyle Bundle (December 11, 2009)

Whose Streets? Paving the Right to the City (March 9, 2010)

Urban Spatial Transformation and Job Accessibility: Spatial Mismatch Hypothesis Revisited
(March 26, 2010)

Immigrant Enclaves and Travel Behavior (April 15, 2010)

*Planners and the Pork Barrel: Metropolitan Engagement in and Resistance to Congressional
Transportation Earmarking* (April 23, 2010)

Additional Events

Building Big: A Critical Examination of the Planning of Mega Urban Transportation Projects
(September 21, 2009)

Rudin Center Annual Reception (October 16, 2009)

Strategic Issues Facing the Ports of New York and Dubai (October 20, 2009)

Transportation Access for the Underserved (February 18, 2010)

*A Tale of Two Cities, and of Climate Change: Future Sea Level Projections in New York
and Abu Dhabi* (April 5, 2010)

*Workshop on Bus Rapid Transit for National Organization of City Transportation Officials
(NACTO),* (April 6-7, 2010)

MTA Unconference for Developers (May 5, 2010)

Leveraging Technology for Transportation Systems (June 23, 2010)

➔ **AFFILIATED
FACULTY**

Our faculty affiliates are drawn from a broad range of disciplines, connecting the Center with the latest ideas and activities in the transportation world and beyond.

- Hilary Ballon**, Professor of Urban Studies and Architecture, NYU Wagner
Vicki Been, Boxer Family Professor of Law and Co-Director, Furman Center for Real Estate and Urban Policy, NYU School of Law
Marlon Boarnet, Professor of Planning, Policy, and Design and Economics, University of California, Irvine
Charles Brecher, Professor of Public and Health Administration, NYU Wagner
Neil Brenner, Professor of Sociology and Director of Metropolitan Studies, NYU
Craig Calhoun, Professor of Sociology and Director of the Institute for Public Knowledge, NYU
Maria Damon, Assistant Professor of Public Policy and Environmental Studies, NYU Wagner
Elizabeth Deakin, Professor of City and Regional Planning, University of California at Berkeley
Harry Dimitriou, Professor of Planning Studies, University College London
Ingrid Ellen, Professor of Urban Planning and Public Policy, Co-Director, Furman Center for Real Estate and Urban Policy, NYU Wagner
John Falcocchio, Professor of Transportation Planning and Engineering and Director of the Urban Intelligent Transportation Systems Center at Polytechnic Institute, NYU
Dall Forsyth, Professor of Practice, NYU Wagner
Zhan Guo, Assistant Professor of Urban Planning and Transportation Policy, NYU Wagner
Jose Holguin-Veras, Professor, Department of Civil and Environmental Engineering, Rensselaer Polytechnic Institute
Rogan Kersh, Associate Professor of Public Service and Associate Dean for Academic Affairs
George Kocur, Senior Lecturer, Department of Civil and Environmental Engineering, Massachusetts Institute of Technology
Harvey Molotch, Professor of Social and Cultural Analysis, and Professor of Metropolitan Studies, NYU
Mitchell Moss, Henry Hart Rice Professor of Urban Policy & Planning, NYU Wagner
Guy Nordenson, Professor of Structural Engineering and Architecture, Princeton University
Katherine O'Regan, Associate Professor of Public Policy, and Director of the Public and Nonprofit Management and Analysis Program, NYU Wagner
Robert Paaswell, Interim President and Distinguished Professor of Civil Engineering at the City College of New York and Director of the University Transportation Research Center, Region 2
Anthony Perl, Professor and Director of Urban Studies, Simon Fraser University
Ellen Schall, Dean of NYU Wagner and Martin Cherkasky Professor of Health Policy & Management Dennis C. Smith, Associate Professor of Public Policy, NYU Wagner
Martin Wachs, Director, RAND Transportation, Space, and Technology Program
Paul Wachtel, Professor of Economics, NYU Stern School of Business
Rachel Weinberger, Assistant Professor of City & Regional Planning, University of Pennsylvania
Rae Zimmerman, Professor of Planning and Public Administration, NYU Wagner



*Zhan Guo,
Rudin Center Research Director and
Assistant Professor of Urban Planning and
Transportation Policy, NYU Wagner*





➔ **RUDIN
STAFF**

Anthony Shorris, Executive Director, Professor of Practice
Professor Zhan Guo, Research Director
Marta Panero, Deputy Director, Research Scientist
Hyeon-Shic Shin, Project Manager, Research Scientist
Andrew Mondschein, Fellow
Emily Dowdall, Policy Research Associate
Lina Duran, Assistant Research Scientist/Program Administrator
Daniel Polo Lopez, Scholar-in-Residence
Galín Brooks, Research Associate
Thomas Coquerel, Research Assistant
Heather Diaz, Program Assistant
Adam Gromis, Research Associate
Gregory Holisko, Research Assistant
Oceane Kedu, Research Assistant
Christian Madera, Research Assistant
Patrick McCandless, Research Associate
Patrizia Nobe, Assistant Research Scientist
Elizabeth Shields, Research Assistant

➔ **PROJECT
SPONSORS**

Accenture
Consolidated Edison, Inc.
Federal Highway Administration
Federal Transit Administration
Mineta Transportation Institute
New York City Department of Transportation
New York Metropolitan Transportation Authority
New York Metropolitan Transportation Council
New York State Department of Transportation
New York State Energy Research and Development Authority
Pipeline and Hazardous Materials Safety Administration
Port Authority of New York and New Jersey
Volvo Research and Educational Foundations
University Transportation Research Center, Region 2
U.S. Department of Transportation

▶▶ ABOUT THE WAGNER SCHOOL

Established in 1938, the Robert F. Wagner Graduate School of Public Service offers advanced programs leading to the professional degrees of Master of Public Administration, Master of Urban Planning, Executive Master of Public Administration, and Doctor of Philosophy. Through these rigorous programs, NYU Wagner educates the future leaders of public, nonprofit, and health institutions as well as private organizations serving the public sector. NYU Wagner prepares serious, talented professionals to face the constantly changing challenges of public service. Trained in management, policy, and finance, NYU Wagner students graduate with the skills they need to confront society's most pressing problems.

In addition to the Rudin Center, Wagner is home to a dozen special policy centers and institutes. With a reputation for quality research and evaluation, these centers keep faculty and students current, make tangible contributions to critical public service areas, and attract talent that greatly enhances the school's effectiveness.

“One of the nation’s pre-eminent
research institutions on transportation”

President William J. Clinton



<http://wagner.nyu.edu/rudincenter/>
295 Lafayette Street
New York, NY 10012
rudin.center@nyu.edu