

**WOMEN OF COLOR POLICY NETWORK
ROUNDTABLE OF INSTITUTIONS OF PEOPLE OF COLOR**

Second Annual Report 2003

**WOMEN OF COLOR IN
NEW YORK CITY:
STILL INVISIBLE IN POLICY**

The Roundtable of Institutions of People of Color is a coalition of non-profit organizations from the Asian, Black, Hispanic and Native American communities. It provides a forum for non-profits from these communities to develop a common agenda; develops and provides research on the economic, social and cultural needs of people of color; and advocates for funding equity from government and philanthropic sources.

Alianza Dominicana
American Indian Law Alliance
Asian Americans for Equality
Association of Hispanic Arts, Inc.
Caribbean Cultural Center
Caribbean Women's Health Center
Center for Law and Social Justice, Medgar
Evers College
Community Service Society
DuBois Bunche Center for Public Policy,
Medgar Evers College
Family Dynamics, Inc.
Family Health Project

Grand Street Settlement
Harlem Children's Zone
Human Services Council
Manhattan Neighborhood Renaissance, LDC
Milano Graduate School of Management and
Urban Policy
Multicultural Initiative at Wagner School, NYU
National Congress for Puerto Rican Rights
Northside Center for Child Development, Inc.
PRLDEF, Institute for Puerto Rican Policy
The Valley, Inc.
West Harlem Environmental Action (WE-ACT)
YMCA of the USA

The Women of Color Policy Network was established by the **Roundtable** in the Fall of 2000 to create a public sphere for Asian, Black, Hispanic and Native American women to engage in discourse about the nexus of gender and race, to develop research and data which can inform advocacy and policy, and to tailor policies and programs to meet their major needs.

Together the **Roundtable** and the **Network** are developing new perspectives about multiculturalism, gender and race, and the intersection with their respective civil societies; they are housed at the Robert F. Wagner Graduate School of Public Service at New York University.

Acknowledgements

The Roundtable of Institutions of People of Color and the Women of Color Policy Network would like to acknowledge Dr. Jo Ivey Boufford, Dean of the Robert F. Wagner Graduate School of Public Service 1997-2002, for her guidance and intellectual support.

This series of reports was edited by Angela Dews

Roundtable of Institutions of People of Color and the Women of Color Policy Network
Robert F. Wagner Graduate School of Public Service at New York University
4 Washington Square North
New York, New York 10003-6671
(212) 998-7511 • fax (212) 995-3890
E-mail: wagner.wocpn@nyu.edu
Website: www.nyu.edu/wagner/wocpn

WOMEN OF COLOR POLICY NETWORK
ROUNDTABLE OF INSTITUTIONS OF PEOPLE OF COLOR
ROBERT F. WAGNER GRADUATE SCHOOL OF PUBLIC SERVICE
NEW YORK UNIVERSITY

Second Annual Report 2003

**WOMEN OF COLOR IN
NEW YORK CITY:
STILL INVISIBLE IN POLICY**

WALTER STAFFORD AND DIANA SALAS

PREFACE	ii
PRINCIPAL FINDINGS	iii
DEMOGRAPHIC CHARACTERISTICS	iii
HEALTH AND MORTALITY.....	iii
HOUSEHOLD ARRANGEMENTS.....	iii
EDUCATIONAL ATTAINMENT.....	iii
ARRESTS AND INCARCERATION.....	iii
EMPLOYMENT	iv
INCOME, POVERTY AND WELFARE	iv
APPROACH TO THE STUDY: LIMITATIONS AND DEFINITIONS	v
LIMITATIONS.....	v
DEFINITIONS.....	v
INTRODUCTION: DEMOGRAPHIC TRANSFORMATION	1
A COMPARISON OF WOMEN OF COLOR IN NEW YORK CITY WITH OTHER LARGE CITIES.....	1
AGE CHARACTERISTICS	5
SHARE OF FEMALE POPULATION BY RACE AND HISPANIC ORIGIN WITHIN AGE COHORTS.....	5
AGE DISTRIBUTION OF WOMEN BY RACE AND HISPANIC ORIGIN.....	6
FERTILITY/BIRTHS	7
FERTILITY RATES	7
BIRTH RATES	7
THE SHARE OF LIVE BIRTHS BY MOTHER’S RACE AND HISPANIC ORIGIN.....	8
SHARE OF LIVE BIRTHS BY MOTHER’S RACE AND HISPANIC ORIGIN AND AGE.....	8
DISTRIBUTION OF LIVE BIRTHS BY MOTHER’S RACE AND HISPANIC ORIGIN AND AGE.....	9
SHARE OF LIVE BIRTHS TO UNMARRIED WOMEN BY RACE AND HISPANIC ORIGIN	9
DISTRIBUTION OF BIRTHS TO UNMARRIED MOTHERS BY RACE AND HISPANIC ORIGIN	10
MORTALITY	11
DEATH RATES	11
SHARE OF FEMALE DEATHS BY RACE AND HISPANIC ORIGIN FOR SELECTED CAUSES.....	11
LEADING CAUSES OF DEATH AMONG WOMEN BY RACE AND HISPANIC ORIGIN.....	12
INFANT MORTALITY RATES	14
MATERNAL MORTALITY RATES	15
HOUSEHOLD ARRANGEMENTS	16
SHARE OF HOUSEHOLDS ARRANGEMENTS BY RACE AND HISPANIC ORIGIN.....	16
DISTRIBUTION OF HOUSEHOLD ARRANGEMENTS WITHIN GROUPS BY RACE AND HISPANIC ORIGIN.....	17

EDUCATIONAL ATTAINMENT.....	18
EDUCATIONAL ATTAINMENT OF THE FEMALE POPULATION BY RACE AND HISPANIC ORIGIN.....	18
DISTRIBUTION OF EDUCATIONAL ATTAINMENT WITHIN GROUPS BY RACE AND HISPANIC ORIGIN.....	18
ARRESTS AND INCARCERATION.....	20
ARREST RATES BY RACE AND GENDER.....	20
SHARE OF ARRESTS AMONG WOMEN BY RACE AND HISPANIC ORIGIN.....	20
LEADING CAUSES OF ARRESTS.....	21
DISTRIBUTION OF ARRESTS AMONG WOMEN BY RACE AND HISPANIC ORIGIN.....	21
INCARCERATION RATES BY RACE AND GENDER.....	22
THE SHARE OF NEW YORK CITY WOMEN INCARCERATED IN NEW YORK STATE PRISONS BY RACE AND HISPANIC ORIGIN.....	23
THE SHARE OF INCARCERATED WOMEN BY RACE AND HISPANIC ORIGIN FROM NEW YORK CITY.....	23
REASONS FOR INCARCERATION AMONG WOMEN BY RACE AND HISPANIC ORIGIN.....	24
SHARE OF INCARCERATED WOMEN BY AGE AND RACE AND HISPANIC ORIGIN.....	25
AGE DISTRIBUTION OF INCARCERATED FEMALES FROM NEW YORK CITY BY RACE AND HISPANIC ORIGIN AND AGE IN NEW YORK STATE PRISONS.....	26
DISTRIBUTION OF FEMALES BY RACE AND HISPANIC ORIGIN AND AGE INCARCERATED FOR PROSTITUTION.....	27
EMPLOYMENT.....	28
UNEMPLOYMENT RATES FOR WOMEN BY RACE AND HISPANIC ORIGIN.....	28
WOMEN IN THE PRIVATE SECTOR BY RACE AND HISPANIC ORIGIN.....	29
INDUSTRIAL SEGMENTATION.....	30
OCCUPATIONAL SEGMENTATION FOR WOMEN IN THE PRIVATE SECTOR BY RACE AND GENDER.....	32
MAYORAL WORKFORCE.....	33
SHARE OF OCCUPATIONS BY RACE AND HISPANIC ORIGIN.....	33
DISTRIBUTION OF WOMEN BY RACE AND HISPANIC ORIGIN BY SELECTED MAYORAL AGENCIES.....	35
INCOME, POVERTY, AND WELFARE.....	37
INCOME AND WAGES.....	37
SHARE OF WOMEN IN POVERTY BY RACE AND HISPANIC ORIGIN.....	38
DISTRIBUTION OF POVERTY AMONG WOMEN BY RACE AND HISPANIC ORIGIN.....	39
WELFARE.....	43
APPENDIX.....	44

Demography is not destiny. While groups of color – Asians, Blacks, Hispanics, and Native Americans – have emerged as New York City’s new majority, large segments of the groups remain burdened by many of the historical problems associated with disadvantaged minorities.

The problems are most acute among lower-income women of color, especially single mothers, who are disproportionately confronted with joblessness and poor health. Often bypassed during the economic boom of the 1990s, these women have found that employment opportunities have all but evaporated in the current economic malaise. The elimination of federal welfare entitlements has exacerbated these problems.

While the women’s movement successfully highlighted many of the broader issues facing women, the needs and problems of New York City’s women of color, who constitute two-thirds of all women in the city, remained largely invisible. Indeed, although the 1990 census showed that the number of women of color in New York City exceeded white women, few analysts or planners highlighted the demographic changes and their policy implications.

The analytical and policy failures were often dire. Educational resources were not targeted to the growing number of young women of color, health care programs ignored the different needs of the increasingly diverse cultural groups, and school-planners often remained oblivious to the changing birth and fertility rates. Closer attention to the demographic trends could have, with accompanying political will, diverted greater resources to address many of the treatable health problems, including the spiraling HIV cases among women of color, and the social conditions underlying the growing number of arrests and incarceration for drugs and prostitution.

In addition to the failure to identify issues and needs of women of color, two additional factors are critical:

1. **The tendency of analyst and policy makers to view the issues and problems of women of color through the prism of white women** This tendency has often led to a false collective construction of “women” that minimizes the particular issues of Asian, Black, Hispanic, and Native American women. This problem has been exacerbated by the paucity of women of color in policy-informing faculty and research positions and in the larger advocacy community.
2. **The tendency to misdiagnose problems that have been identified.** Even when the issues and problems of women of color have been identified, they have been misdiagnosed because of stereotypes and cultural and language barriers. Historically, these problems have been especially acute for Black and Puerto Rican women. They have become more complicated with the increase of immigrant women from Asia, Africa, the Caribbean, and Latin America.

Demographic Characteristics

- Women of color are two-thirds of all women in New York City.
- Women of color constitute 76 percent of all women under 15.
- White women are 56 percent of all women 65 and over.

Health and Mortality

- Seven out of ten live births are to women of color.
- Sixty-two (62) percent of the live births to women of color are to women under 30.
- Infant mortality rates for Blacks and Puerto Ricans continue to exceed the national average.
- Black and Puerto Rican women account for 80 percent of HIV-related deaths.
- Black women make up nearly 50 percent of all deaths from assaults.

Household Arrangements

- Asians are the only group with 50 percent or more of its members living in married couple households.
- Among Black and Hispanic households, 30 percent or more are female-headed.
- White women make up the dominant share of non-family households (56 percent). Twenty-one (21) percent of non-family households are Black, 14 percent Hispanic and six percent Asian.
- White women also make up the dominant share of women living alone (58 percent) – an almost 10-point decline from 66 percent in 1990.

Educational Attainment

- Only 20 percent of Black women, 14 percent of Native American women and eight percent of Hispanic women have completed 13 or more years of education.
- Thirty-one (31) percent of Asian women have 13 or more years of education; an almost equal proportion failed to complete high school.
- Sixty-five (65) percent of all the women with professional or graduate degrees are white.

Arrests and Incarceration

- Black females have the highest female arrest rate in the city (3344.9 of 100,000), exceeding that of white males (3127 of 100,000).
- The arrest rates for Black women were the only rates that increased between 1995 and 2001.
- Black women and Latinas are 85 percent of all women arrested.
- Between 1995 and 2001 the proportion of women aged 16 to 24 incarcerated for prostitution jumped from 25 to 42 percent.
- Black women, who were 28 percent of the female population, were over half of the women arrested. Latinas, who were 27 percent of the population, were more than a quarter of the women arrested.
- The incarceration rate for Black women (730.7 per 100,000), like the arrest rate, exceeded that for white males (488.3 per 100,000).

Employment

- Black women and Latinas had the highest average unemployment rates of any group during the 1990s.
- Black women make up 21 percent of the Mayoral workforce but only four percent of the top administrators.
- In private industries with 100 or more employees, 19 percent of all white women, 10 percent of Asian women, but only six percent of Black women and six percent of Latinas work as officials and managers.

Income, Poverty and Welfare

- Between 1990 and 2000, the median family incomes of Asians and Blacks declined, while the median family incomes rose for Latinos – the group with the lowest family incomes – and for whites – the group with the highest family incomes.
- Eighty-one (81) percent of the women in poverty are women of color, primarily Black and Hispanic.
- Among Hispanic women, 34 percent live in poverty. Thirty two (32) percent of Native American women, 27 percent of Black women and 20 percent of Asian women live in poverty.
- The majority of the recipients of Temporary Assistance for Needy Families (TANF)/public assistance are concentrated in 15 of the city's 59 community districts, primarily in Brooklyn and the Bronx.

APPROACH TO THE STUDY: LIMITATIONS AND DEFINITIONS

This study uses census and administrative data to contrast the status of women of color by race and Hispanic origin with white women and, in selected cases, with white men and men of color. Where possible the data are disaggregated by specific ethnic groups. The data are organized and presented to show share, distribution and rates.

Limitations

The major limitations of the data analysis are (1) the paucity of information on Asians and Native Americans, (2) the change in race categories used in the census data in 1990 and 2000, (3) a lack of data on race and gender in small industries and in administrative positions.

Definitions

Share	This calculation shows the representation of groups within a total population. It is frequently used to demonstrate the under- or over- representation of groups by race and gender.
Distribution	This calculation shows the proportion of characteristics, activities or events within a specific group.
Rate	The amount or degree of one thing in relation to units of something else.
Asians/Pacific Islanders*	Persons of Asian descent, including Koreans, Filipinos, Chinese, Japanese and South Asians
Blacks/African Americans	Persons of African descent, including Caribbeans and Africans; generally referred to as Blacks
Hispanics/Latinos	Persons of any race of Hispanic descent, including Puerto Ricans, Mexican Americans, Central Americans and Latin Americans
Native-Americans	Indigenous persons from the United States, including American Indians, Alaskans and Aleuts
White Non-Hispanics	Persons of European ancestry; generally referred to as white non-Hispanics or white

* Racial and ethnic categories used throughout the report are consistent with the terminology used in the 2000 Census.

INTRODUCTION: DEMOGRAPHIC TRANSFORMATION

At the turn of the 20th century, women were slightly more than half of New York City's population of roughly 3,500,000 persons. Virtually all (98 percent) of the women were white. Slightly more than one-third of the white women were immigrants. The small population of women of color ("colored" was the term of the era) was Black, part of a slave community that was present during the colonial period but emancipated in 1827.

A century later, women remain about half the city's population of 8,008,278. However, today, almost two-thirds (64 percent) of the women are persons of color – Asians, Blacks, Hispanics, and Native Americans.

The demographic transformation reflects a number of factors, most notably the passage of the 1965 Immigration Act, which removed entry barriers to people of color from Africa, Asia, the Caribbean and Latin America. Between 1970 and 2000 nearly 80 percent of the newcomers to New York City came from countries other than the European countries that had been the principal sources of immigration prior to the mid-60s.

A Comparison of Women of Color in New York City with Other Large Cities

According to 2000 census figures, New York City has the largest number and the greatest diversity of women of color. A mark of its diversity is that among women of color, no one group is the majority: Black women are 28 percent, Latinas 27 percent, Asians 9 percent and Native Americans less than one percent. The diversity is reflected in residential patterns. As the accompanying maps show (Figures 1-4), women are concentrated in pockets in the boroughs. Black women are largely concentrated in Brooklyn and parts of Manhattan. Latinas are dispersed in the Bronx, Queens and Manhattan. Asian women are largely concentrated in Queens, Brooklyn and in Manhattan's Chinatown. (Native Americans were excluded due to the small numbers within in the Community Districts – See Appendix A1.)

While New York City is the most diverse city, the actual share of women of color in the female population is significantly higher in other cities. Among cities with 500,000 or more residents, those with the highest share of women of color are Detroit (89 percent), El Paso (83 percent), Miami (80 percent) and Washington D.C. (72 percent). New York City ranked 11th. (Table 1)

The demographic dominance of women of color in New York City and other large cities diverges significantly from the national population. Nationally, women of color were 29 percent of the country's female population in 2000, up from 25 percent in 1990.

Figure 1
Asian Women as a Percent of All Women in Community Districts:
New York City 2000

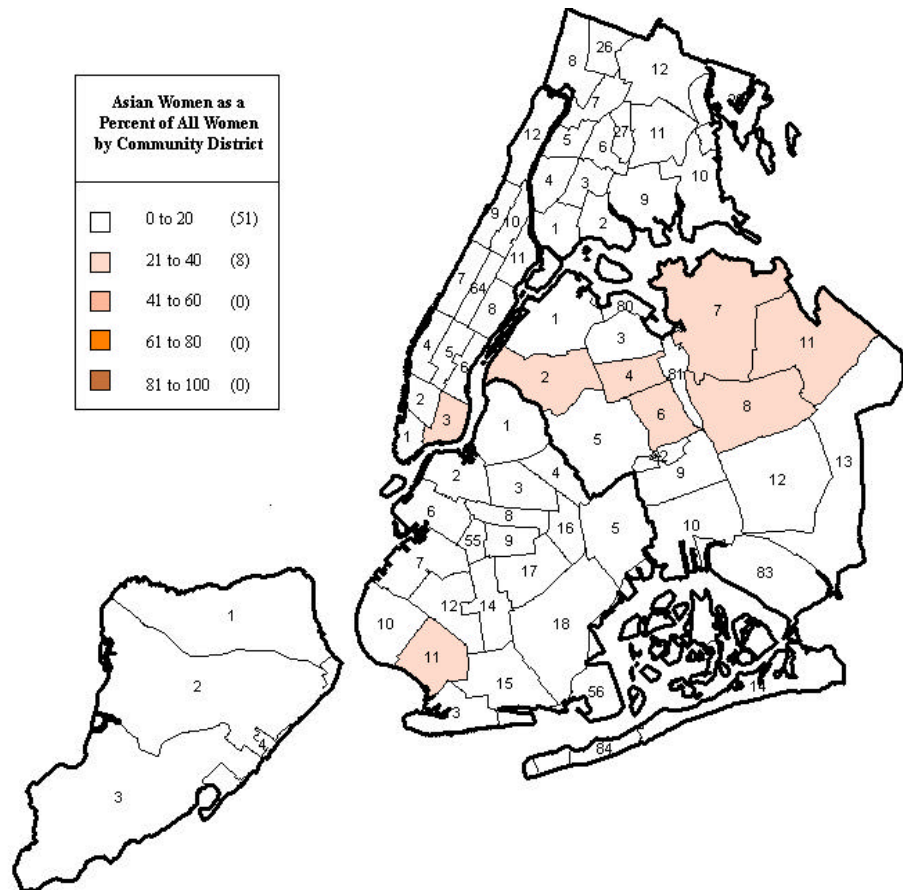


Figure 2
Black Women as a Percent of All Women in Community Districts:
New York City 2000

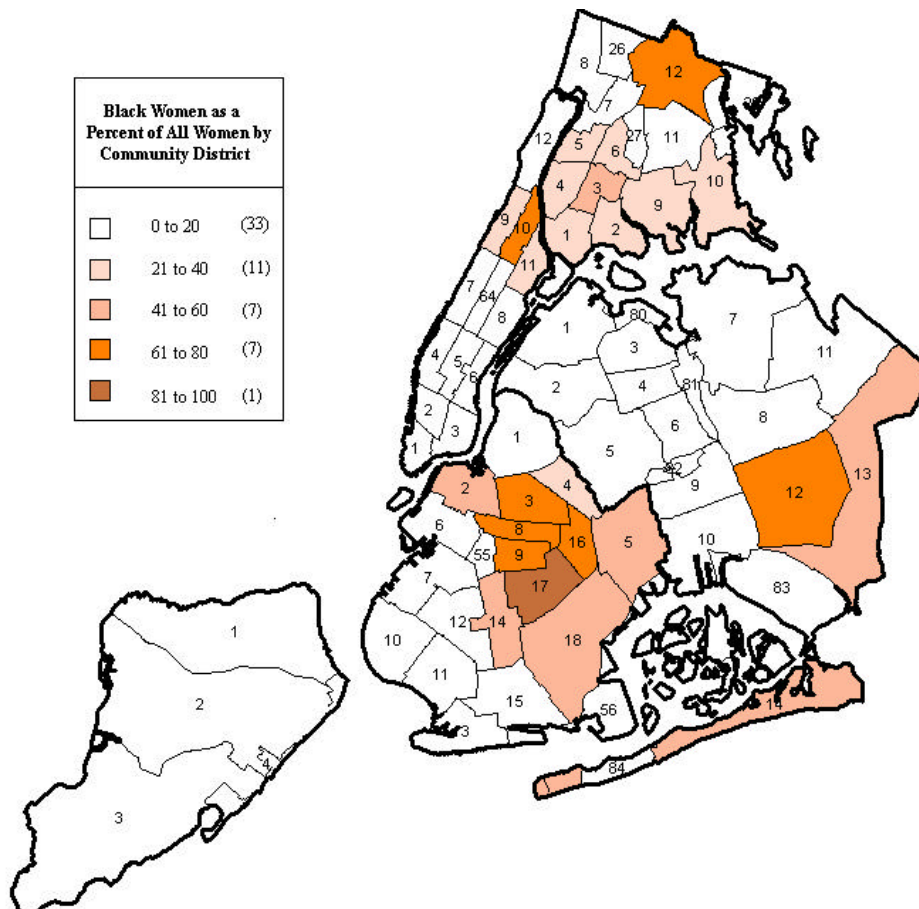


Figure 3
 Hispanic Women as a Percent of All Women in Community
 Districts: New York City 2000

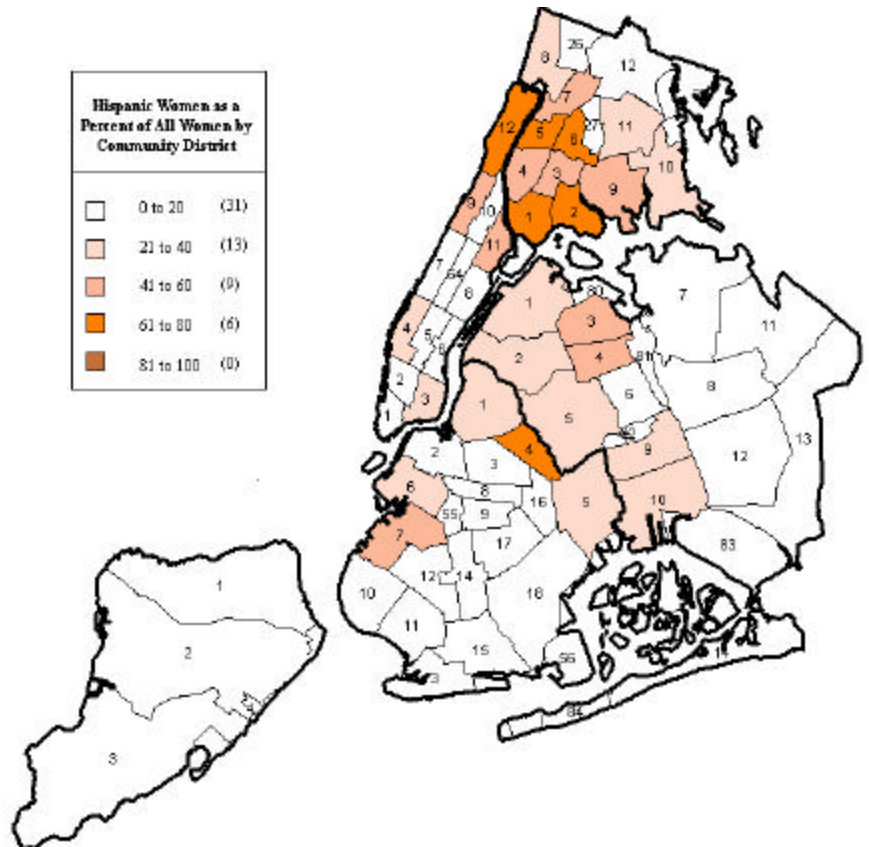


Figure 4
 White Women as a Percent of All Women in Community Districts:
 New York City 2000

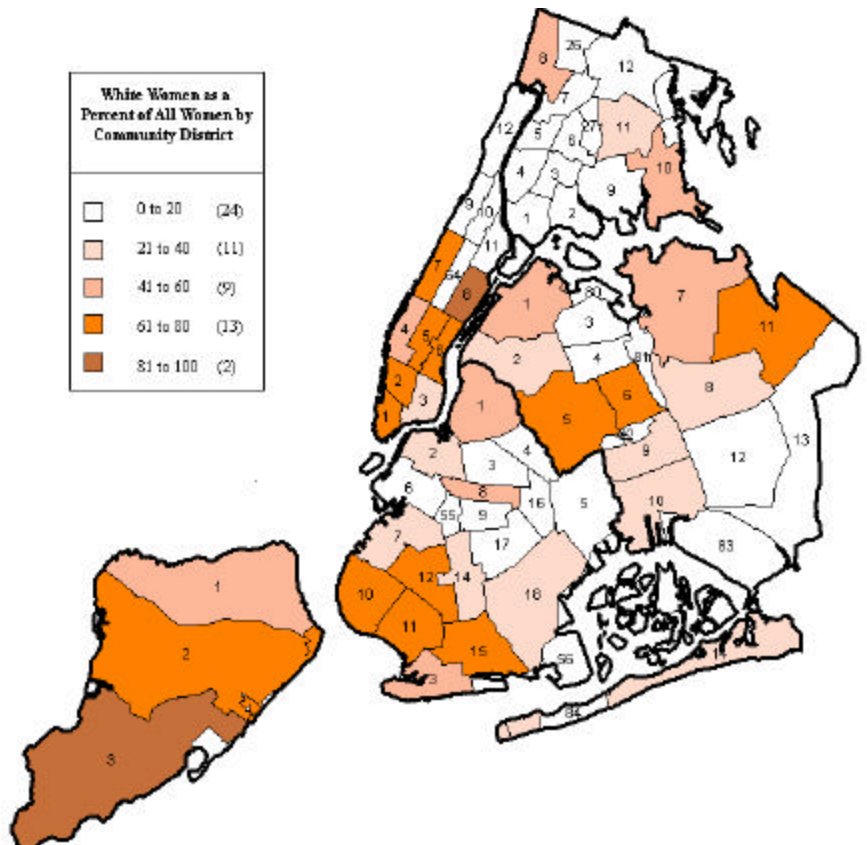


Table 1

Women by Race/Hispanic Origin as a Percent of All Women in Cities with Populations over 500,000: 2000

Cities with a Population Over 500,000	Representation of Women by Race and Hispanic Origin				Women of Color as a Percent of All Women	White Women as a Percent of All Women
	Asian	Black	Hispanic	Native American		
Detroit	0.9	83.1	4.3	0.3	88.6	9.8
El Paso	1.2	2.8	77.9	0.8	82.7	17.4
Miami	1.4	20.6	57.6	0.2	79.8	20.0
Washington DC	2.8	62	7.0	0.3	72.1	26.5
Baltimore	1.5	65.6	1.5	0.3	68.9	30.1
Los Angeles	10.5	12.0	45.5	0.8	68.8	29.6
Houston	5.2	27.1	35.3	0.4	68.0	31.2
Chicago	4.3	38.99	24.2	0.3	67.8	31.1
San Antonio	1.7	6.9	58.5	0.8	67.9	31.9
Memphis	1.4	62.8	2.1	0.2	66.5	32.9
New York City	9.4	27.9	26.6	0.5	64.4	34.7
Dallas	2.7	28.4	32.2	0.5	63.8	35.4
San Jose	27.3	3.5	29.4	0.8	61.0	36.4
Philadelphia	4.2	44.6	8.1	0.3	57.2	41.8
San Francisco	33.1	8.0	13.5	0.4	55.0	41.8
United States	3.6	12.7	11.9	0.9	29.1	69.3

Note that the total may not equal 100
Source: U.S. Census Bureau: 2000

Age distribution provides important information for assessing current and future resource needs, consumer behavior, and health requirements, especially for groups under 15 and over 65.

One of the city’s greatest policy challenges is to provide resources for a bulging population of young women of color and an older white female population (dependency ratio). The intersection of age and socioeconomic changes affects many of the issues in this study.

Share of Female Population by Race and Hispanic Origin within Age Cohorts

In 2000, women of color were slightly more than three-fourths (76 percent) of the city’s females 15 and younger, and white females were 56 percent of the women 65 and older.

Latinas constituted the largest share of young women of color. More than one-third (34 percent) of women under 15 were Latina, while 32 percent were Black. By contrast, in 1990, Black women were the largest group of young women with 36 percent of the population.

As women of color age their share of the population declines. In 2000, women of color constituted more than two-thirds (67 percent) of the women 20 to 44, but only 43 percent of women 65 and over. (Table 2)

Table 2
Share of Female Population by Race/Hispanic Origin Within Age Cohorts in New York City: 1990 & 2000

Age Cohorts	Asian Women		Black Women		Hispanic Women		Native American Women		Total Women of Color		White Women		All Women	
	1990	2000	1990	2000	1990	2000	1990	2000	1990	2000	1990	2000	1990	2000
Total	6.5	9.4	29.7	27.9	24.0	26.6	0.4	0.5	60.6	64.4	43.0	34.7	100.0	100.0
Under 15	6.8	8.6	36.3	32.4	32.6	34.4	0.5	0.8	76.1	76.2	28.7	23.2	100.0	100.0
15 to 19	7.5	9.1	36.2	32.3	30.5	33.0	0.4	0.6	74.6	75.0	30.0	24.2	100.0	100.0
20 to 44	7.8	11.2	30.2	27.3	25.3	27.8	0.4	0.5	63.8	66.8	40.0	32.0	100.0	100.0
45 to 64	6.0	9.2	28.9	27.5	21.2	23.0	0.3	0.4	56.3	60.1	46.8	39.0	100.0	100.0
65 and Over	3.0	5.7	19.2	22.3	11.6	15.2	0.2	0.3	34.0	43.4	67.7	56.0	100.0	100.0

Source: U.S. Census Bureau: 1990 & 2000
Note that the total may not equal 100

Age Distribution of Women by Race and Hispanic Origin

The age distribution among women of color contrasts significantly with white women. In 2000, 30 percent of Native Americans and roughly one quarter of Latinas and 22 percent of Black women were below the age of 15. Seventeen (17) percent of Asians and 13 percent of white women were under that age.

Twenty-two (22) percent of white women were over the age of 65, but only nine percent of women of color were over 65. The highest proportion of women of color over 65 was among Black women – only 11 percent. (Table 3)

Table 3

Age Distribution of Women by Race/Hispanic Origin in New York City: 1990 & 2000

Age Cohorts	All Women		Asian Women		Black Women		Hispanic Women		Native American Women		Total Women of Color		White Women	
	1990	2000	1990	2000	1990	2000	1990	2000	1990	2000	1990	2000	1990	2000
Under 15	17.9	19.0	18.6	17.4	21.9	22.0	24.3	24.5	23.6	29.9	22.5	22.4	12.0	12.7
15 to 19	6.0	6.1	6.9	5.9	7.3	7.0	7.6	7.5	7.0	7.2	7.4	7.1	4.2	4.2
20 to 44	40.8	39.4	49.1	46.9	41.5	38.6	43.1	41.2	44.6	38.6	43.0	40.9	38.0	36.4
45 to 64	19.9	21.8	18.2	21.5	19.3	21.5	17.6	18.9	16.4	17.2	18.5	20.4	21.7	24.5
65 and Over	15.3	13.7	7.1	8.3	9.9	10.9	7.4	7.8	8.3	7.1	8.6	9.2	24.2	22.2
Total	100.0	100.0	100.0	100.0	100.0	100.0	100.0	100.0	100.0	100.0	100.0	100.0	100.0	100.0

Source: U.S. Census Bureau: 1990 & 2000

There are many factors that influence the differentials of fertility and birth rates by Race and Hispanic origin, including the proportion of women in childbearing ages, income, education, and culture.

Fertility Rates

Over the 1990s, the fertility rates for women of color declined, yet remained substantially higher than the rates for white women, which increased slightly.

In 2000, Latinas had the highest fertility rate (73.8 per 1,000), a decline from 93.5 a decade earlier. The rate for Asian women declined to 72.2 from 87.6 in 1990 and for Black women to 61.3 from 74.7. By contrast, the fertility rate for white women increased to 61.9 from 55.1. (Table 4)

Birth Rates

The birth rate for New York City in 2000 was 15.7 per 1,000 live births, a decrease from 19.1 in 1990. Rates declined for women of color between 1990 and 2000, but remained higher than those for white women. Asian women had the highest birth rate of any group (19.2), followed by Latinas (18.7) and Black women (15.4). By contrast, the birth rate for white women was 13.1, up from 12.3 in 1990. (Table 4)

For teenagers 15 to 19 in New York City, the birth rate of 41.5 in 2000 was lower than the national average (48.7). Latinas had the highest teenage birth rate in the city (65.9), followed by Black teenagers (47.5). Asian and white women had the lowest teenage birth rates: both were roughly 13 per 1,000 live births. (Table 4)

Fertility Rates are the number of live births per 1,000 women of childbearing age, usually 15 to 44, for a specified group.

Birth Rates are the number of live births per 1,000 in the population for a specified group.

Teenage Birth Rates are the number of live births per 1,000 women aged 15 to 19 for a specified group.

Table 4

Fertility, Birth, and Teenage Birth Rates by Race/Hispanic Origin: New York City: 1990 & 2000

Race/Hispanic Origin	Fertility Rate		Birth Rate		Teenage Birth Rate
	1990	2000	1990	2000	2000
Asian	87.6	72.2	24.2	19.2	12.7
Black	74.7	61.3	20	15.4	47.5
Hispanic	93.5	73.8	24.8	18.7	65.9
White	55.1	61.9	12.3	13.1	13.0
NYC	76.8	65.5	19.1	15.7	41.5

Source: New York City Health Department, Summary of Vital Statistics 1990 & 2000

The Share of Live Births by Mother's Race and Hispanic Origin

Seven of every ten live births (70 percent) were to women of color in both 1990 and 2000. Latinas constituted 32 percent of the women giving birth, Black women 26 percent and Asian women 12 percent. White women constituted 29 percent. The live birth patterns were similar to live births a decade before, except that the share of Asians increased and the share of Blacks declined. (Table 5)

Share of Live Births by Mother's Race and Hispanic Origin and Age

In 2000, 92 percent of all live births to women under 19 were to women of color, mainly Latinas (53 percent) and Blacks (37 percent).

The majority of the births to women under 30 were also to women of color (78 percent). Latinas constituted 39 percent, Black women 29 percent and Asians 11 percent. White women accounted for 21 percent of the births to women under 30. The largest group of women over 30 to give birth were white women (39 percent).

Table 5

Percentage of Live Births by Age of Mother and Race/Hispanic Origin in New York City: 2000

Age Cohort	Asian Women	Black Women	Hispanic Women	Total Women of Color	White Women	All Women
Total	12.0	26.2	32.1	70.3	29.3	100.0
under 19	2.8	36.9	52.5	92.2	7.5	100.0
under 30	10.5	28.5	39.2	78.2	21.4	100.0
30 and Over	14.0	23.3	23.1	60.3	39.3	100.0

Note the total may not equal 100

Source: New York City Department of Health, Summary of Vital Statistics: 2000

Distribution of Live Births by Mother's Race and Hispanic Origin and Age

Women of color have children at younger ages. In 2000, 62 percent of women of color were under 30 when they had a child. By contrast, 59 percent of white women were 30 and over.

Seventy (70) percent of the Latinas who gave birth were under 30, as were 61 percent of the Black mothers and 50 percent of Asians. Forty-one (41) percent of white children were born to mothers younger than 30.

Fourteen (14) percent of Latina mothers and 12 percent of Black mothers were teenagers (19 and under), but only two percent of Asian and white women who gave birth in 2000 were teenage mothers. (Table 6)

Table 6

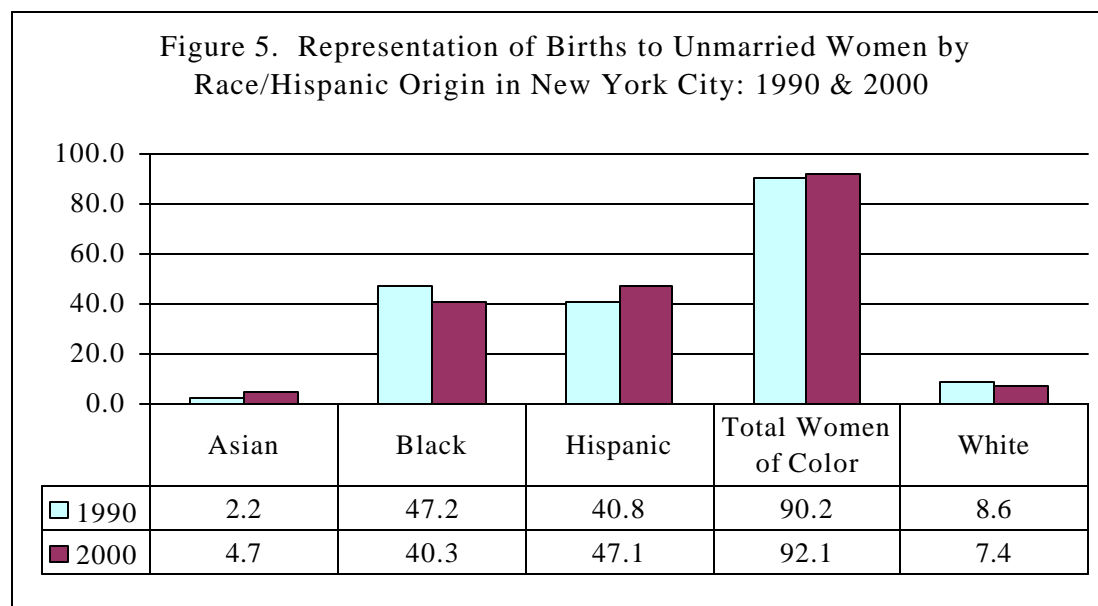
Percent Distribution of Live Births by Mothers' Race/Hispanic Origin and Age in New York City: 2000

Age Cohort	All Women	Asian Women	Black Women	Hispanic Women	Total Women of Color	White Women
under 19	8.6	2.0	12.1	14.1	11.3	2.2
under 30	55.8	48.7	60.7	68.2	62.1	40.7
30 and Over	44.2	51.3	39.3	31.8	37.9	59.3
Total	100.0	100.0	100.0	100.0	100.0	100.0

Source: New York City Department of Health, Summary of Vital Statistics 2000

Share of Live Births to Unmarried Women by Race and Hispanic Origin

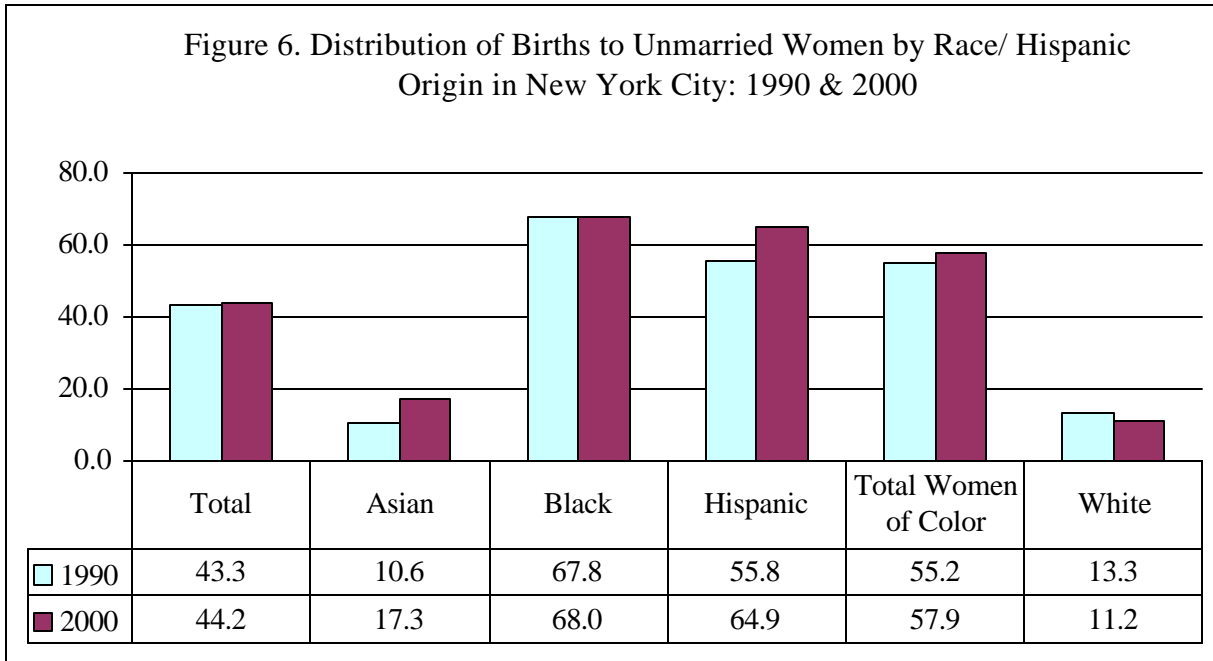
Ninety-two (92) percent of the city's live births to unmarried females in 2000 were to women of color, primarily Black women and Latinas. Nearly half of the births (47 percent) were to Latinas and 40 percent were to Black women. Asian women constituted five percent and white women seven percent. (Figure 5)



Source: New York City Health Department, Summary of Vital Statistics: 1990 & 2000

Distribution of Births to Unmarried Mothers by Race and Hispanic Origin

In New York City, of all the live births in 2000, 44 percent were to unmarried women. Among Black women, 68 percent were to unmarried women. Among Latinas, it was 65 percent. For Asian women, 17 percent of the births were to unmarried women and 11 percent to white women. There were significant increases among Latinas and Asians and declines among whites. Blacks remained virtually the same at roughly 68 percent. (Figure 6)



Source: New York City Health Department, Summary of Vital Statistics: 1990 & 2000

Women of color – especially Black and Hispanic women – are more likely to die from diabetes, AIDS, and homicide than white women. Many of these causes can be attributed to lack of access to health care and to poverty.

Death Rates

Death rates for the city and for women have declined over the last decade. However, there are great variations by race and Hispanic origin. Between 1990 and 2000, the overall death rate dropped from 1,008.9 to 759.8 per 100,000, and the rate for females from 908.5 to 741.6. White women, who had the largest proportions in the older cohorts, had the highest death rate (1,232.4) and Asian women the lowest (256.3). Black women and Latinas, with relatively young populations, had rates of 738.9 and 339.5 respectively.

Share of Female Deaths by Race and Hispanic Origin for Selected Causes

Deaths from HIV disease have increased for Black and Puerto Rican women (according to the New York City Health Department, deaths due to HIV disease are not divided into AIDS deaths and deaths due to other HIV infections). In 1991, these two groups accounted for approximately 68 percent of HIV deaths (Black women 49 percent and Puerto Rican women 18 percent) and 80 percent in 2000 (Black women 60 percent and Puerto Rican women 20 percent). Other Hispanic women were roughly seven percent of those who died from HIV disease, Asian women remained unchanged at less than one percent, and white women declined from about 15 to 11 percent.

In 2000, Black and Hispanic women were disproportionately represented among female homicide victims. Black women and Latinas accounted for slightly more than three-fourths (76 percent) of the female homicide victims. Black women accounted for half of all the female victims of homicide, and Latinas accounted for 28 percent. (Table 7)

Black women constituted 41 percent of all the women who died of diabetes in 2000. Puerto Ricans were 14 percent, Other Hispanics five percent and Asians four percent. White women accounted for 35 percent of women who died from diabetes.

White women were more likely than women of color to have died from malignant neoplasms (abnormal tissue growth, such as tumors). In 2000, more than half (58 percent) of women who died of malignant neoplasms were white. Among women of color, 25 percent of the deaths were to Black women, six percent to Puerto Ricans and other Hispanics, and four percent to Asians.

Two-thirds of the women who died from heart disease were white – they had the largest population in the oldest age group. Twenty-one (21) percent were Black, six percent Puerto Rican, four percent Other Hispanic and two percent Asian.

Death Rates are the number of deaths per 100,000 in the population for a specified group.

Infant Mortality are the number of infant deaths (under one year of age) per 1,000 live births in a specified population

Maternal Mortality Rate are the number of women who died while pregnant, within 42 days of termination or while giving birth per 1,000 live births in a specified population.

Table 7

Share of Female Deaths by Race/Hispanic Origin for Selected Causes in New York City: 2000

Cause of Death	Asian Women	Black Women	Puerto Rican Women	Other Hispanic Women	Total Women of Color	White Women	All Women
Total Deaths	3.2	25.7	7.2	5.0	41.1	57.6	100.0
HIV	0.3	60.4	20.4	6.8	87.9	10.7	100.0
Homicide	2.4	48.8	11.8	15.7	78.7	16.5	100.0
Diabetes	4.1	41.2	14.0	4.8	64.0	34.6	100.0
Malignant Neoplasms	4.1	25.1	6.2	5.6	40.9	58.0	100.0
Heart disease	2.4	21.2	5.5	3.8	32.9	65.9	100.0

Note total may not equal 100

Source: New York City Department of Health. Summary of Vital Statistics: 2000

Leading Causes of Death Among Women by Race and Hispanic Origin

Nearly three-fourths (73 percent) of Black women died from diseases of the heart, malignant neoplasms, HIV, diabetes, and cerebrovascular diseases. Among Puerto Rican women, the leading causes were heart disease, malignant neoplasms, diabetes and HIV. These causes accounted for 70 percent of their deaths. Sixty-nine (69) percent of the city's Other Hispanic women died from diseases of the heart, malignant neoplasms, cerebrovascular diseases, influenza and pneumonia, and HIV. Among Asian women, diseases of the heart, malignant neoplasms, cerebrovascular diseases, influenza and pneumonia, and diabetes accounted for 77 percent of their deaths.

Unlike women of color, 50 percent of all white women died from one cause: diseases of the heart. Malignant neoplasms, influenza and pneumonia, cerebrovascular diseases, and chronic lower respiratory diseases accounted for one-third of the remaining deaths.

Table 8

Percent Distribution for Selected Causes of Death for Women by Race/Hispanic Origin in New York City: 2000

Cause of Death	All Women	Cause of Death	Asian Women	Cause of Death	Black Women
Heart Disease	43.5	Heart disease	32.8	Heart disease	35.9
Malignant Neoplasms	23.2	Malignant Neoplasms	29.5	Malignant Neoplasms	22.6
HIV Disease	3.9	Cerebrovascular	6.1	Diabetes	5.2
Cerebrovascular	3.7	Influenza & Pneumonia	4.2	HIV	4.7
Diabetes	3.2	Diabetes	4.1	Cerebrovascular	4.0
sub total	77.5	sub total	76.7	sub total	72.4

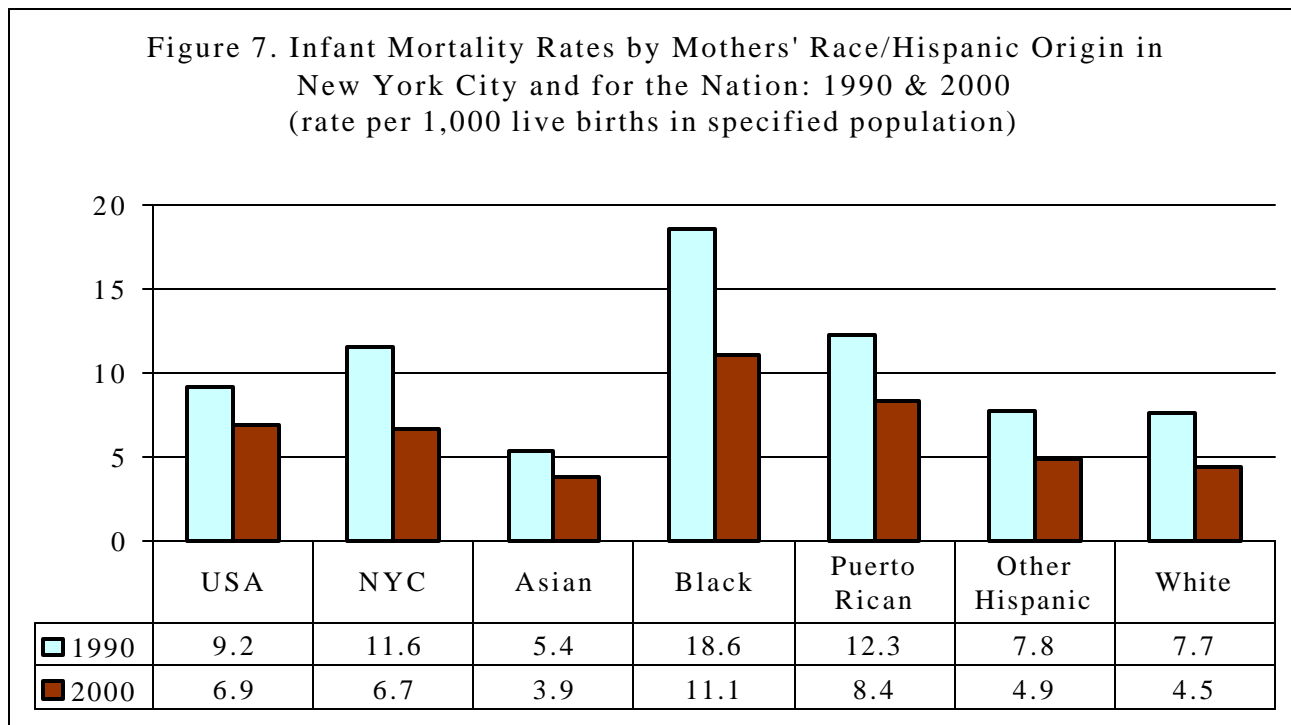
Cause of Death	Puerto Rican Women	Cause of Death	Other Hispanic Women	Cause of Death	White Women
Heart disease	33.5	Heart disease	32.9	Heart disease	49.8
Malignant Neoplasms	20.0	Malignant Neoplasms	25.8	Malignant Neoplasms	23.4
Diabetes	6.3	Cerebrovascular	5.2	Influenza & Pneumonia	4.1
HIV Disease	5.7	Influenza & Pneumonia	3.8	Cerebrovascular	3.1
Influenza & Pneumonia	4.6	HIV Disease	1.3	Chronic Lower Respiratory	3.0
sub total	70.1	sub total	69.0	sub total	83.4

Source: New York City Department of Health, Summary of Vital Statistics: 2000

Infant Mortality Rates .

Infant mortality rates for New York City declined dramatically between 1990 and 2000, from 11.6 to 6.7 per 1,000 live births and fell slightly below the national average of 6.9. Despite the declines, the rates among Blacks and Puerto Ricans continue to exceed both the local and national averages.

In 1990, the infant mortality rate for Blacks was 18.6 per 1,000 live births and among Puerto-Ricans it was 12.3. By 2000, the rate for Blacks had declined to 11.1 and for Puerto Ricans to 8.4. Asians, Other Hispanics, and whites had substantially lower rates. In 2000, the rate for Asians was 3.9, down from 5.4 in 1990. The rate among Other Hispanics also declined to 4.9 from 7.8, and among whites, there was a decline from 7.7 to 4.5. (Figure 7)

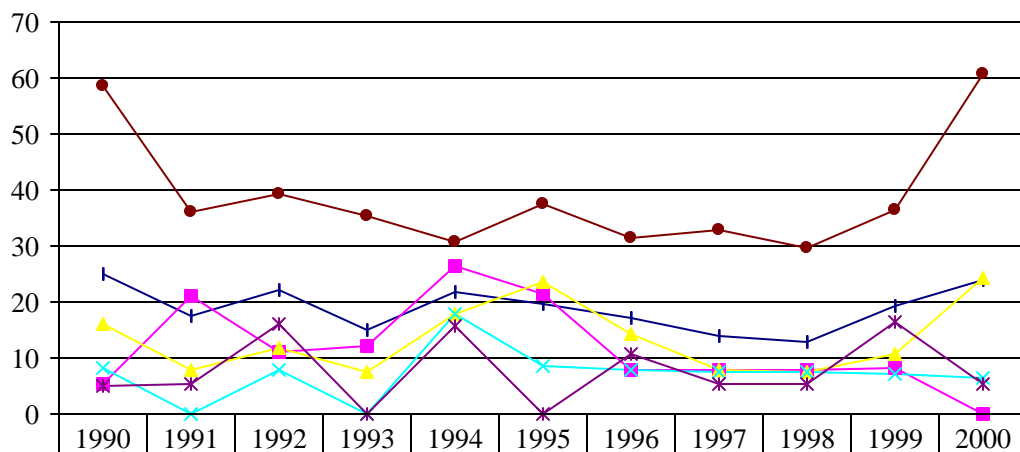


Source: New York City Health Department, Summary of Vital Statistics: 1990 & 2000 and the National Center for Vital Statistics, 2000

Maternal Mortality Rates

Blacks not only have the highest infant mortality rates, but the highest rate of maternal deaths. The maternal death rate for Black women was 58 per 1,000 in 1990, twice the rate of the city and significantly higher than any other women’s group. In the ensuing years, Black women’s maternal mortality rates dropped modestly. However, between 1999 and 2000 the rates increased dramatically, jumping from 36.4 to 60.8 per 1,000 – the highest in 15 years. The rates for Hispanics other than Puerto Rican also increased between in 1999-2000, while the rates for Puerto Rican, Asian and white women declined. (Figure 8)

Figure 8. Maternal Mortality Rates by Race/Hispanic Origin in New York City:
1990-2000
(rates per 100,000 live births)



	1990	1991	1992	1993	1994	1995	1996	1997	1998	1999	2000
—+— Total	25.1	17.4	22.1	15	21.7	19.8	17.3	13.8	12.9	19.4	23.9
—■— Puerto Rican	5.2	21.2	11.2	12.1	26.3	21.6	7.7	7.7	7.7	8.2	-
—▲— Other Hispanic	16.1	7.8	11.7	7.5	17.7	23.6	14.2	7.7	7.5	10.8	24.4
—x— Asian	8.1	-	7.9	-	17.7	8.6	7.8	7.6	7.6	7.3	6.6
—*— White	5.1	5.3	16.2	-	15.7	-	10.7	5.4	5.4	16.5	5.4
—●— Black	58.4	36.2	39.3	35.2	30.6	37.6	31.6	32.8	29.7	36.4	60.8

Source: New York City Health Department, Summary of Vital Statistics: 2000

HOUSEHOLD ARRANGEMENTS

New York City has a greater variety of household types than the nation as a whole. The share of non-family households is particularly noticeable. In New York City, 40 percent of all households were non-family arrangements, compared to 32 percent for the country.

Share of Households Arrangements by Race and Hispanic Origin

In 2000, nearly half (46 percent) of the city's married couple households were white, a sharp drop from 1990 when they accounted for more than half (56 percent).

Twenty-one (21) percent of the married couple households were Hispanics, 16 percent were Blacks, 13 percent were Asians, and less than one percent were Native Americans.

More than three-quarters (76 percent) of female-headed households in 2000 were Black and Hispanic. (Table 9)

A Household contains one or more people; everyone living in a housing unit makes up a household. One of the people who own or rent the residence is designated as the householder. For the purposes of examining family and household composition, two types of households are defined: family and non-family.

A Family Household has at least two members related by blood, marriage, or adoption, one of whom is the householder. Family households are maintained by married couples or by a man or women living with other relatives; children may or may not be present.

A Non-family household can be either a person living alone or a householder who shares the housing unit with non-relatives only.

White women made up the dominant share of non-family households 56 percent. Twenty-one (21) percent were Black, 14 percent were Hispanic and six percent were Asian. White women also made up the dominant share of women living alone (58 percent) – an almost 10-point decline from 66 percent in 1990. Black women made up 22 percent of women living alone in both years. The share of Hispanic women living alone increased from 11 to 13 percent. Asians accounted for only five percent. (Table 9)

Table 9

The Share of Living Arrangements by Race/Hispanic Origin: New York City: 1990 & 2000

Living Arrangement	Asian Households		Black Households		Hispanic Households		Native American Households		White Households		NYC Households	
	1990	2000	1990	2000	1990	2000	1990	2000	1990	2000	1990	2000
All Households	5.5	8.1	25.4	23.3	19.7	21.8	0.3	0.2	52.0	43.4	100.0	100.0
Family Households	6.7	9.6	27.8	24.8	24.0	26.5	0.4	0.2	44.7	35.4	100.0	100.0
Married Couple Households	8.4	12.6	19.1	16.3	18.8	21.4	0.3	0.1	55.8	45.8	100.0	100.0
Female Headed Households	2.7	3.8	45.3	40.6	33.7	34.7	0.4	0.2	23.5	17.9	100.0	100.0
Non-Family Households	3.6	5.8	21.5	20.9	12.8	14.4	0.3	0.2	63.7	56.0	100.0	100.0
Householder Living Alone	3.1	5.1	21.8	21.9	12.1	13.7	0.2	0.2	64.5	56.5	100.0	100.0
Female Living Alone	2.5	4.8	21.8	22.4	11.2	12.8	0.2	0.2	65.9	57.5	100.0	100.0

Note total may not equal 100

Source: U.S. Census Bureau: 1990 & 2000

Distribution of Household Arrangements Within Groups by Race and Hispanic Origin

Among Black households, female-headed families are the dominant arrangement. In both 1990 and 2000, they were roughly one-third of all Black households. Over the decade, the percentage of Black married couples declined from 29 to 26 percent, while the percentage of non-family arrangements increased from 33 to 35 percent. The number of females living alone remained small – 17 percent of all Black households in 1990 and 18 percent in 2000. (Table 10)

Among Hispanic households in 2000, married-couple families constituted 41 percent of the households, an increase from 37 percent in 1990. In both years, female-headed households were approximately 30 percent and non-family arrangements constituted nearly 26 percent.

The only group with 50 percent or more living in married couple households were Asians (60 percent in 1990 and 58 percent in 2000). Non-family arrangements and female-headed households also remained relatively stable.

Among Native Americans, non-family households were the most common living arrangement (37 percent, up from 31 percent in 1990). Married couple households were 30 percent in 2000, a decrease from 36 percent in 1990. Roughly one-quarter of the households were female-headed in both years.

In 1990 and 2000, white households had the highest proportion of non-family arrangements of all groups. In 1990, 47 percent of all whites lived in these household arrangements, as did half in 2000. One-quarter (25 percent) of all the non-family households were females living alone – the highest for any group. Married-couple households dropped from 42 to 39 percent. Female-headed households remained roughly eight percent of all households in both years. (Table 10)

Table 10

Distribution of Living Arrangements by Race/Hispanic Origin in New York City: 1990 & 2000

Living Arrangement	NYC Households		Asian Households		Black Households		Hispanic Households		Native American Households		White Households	
	1990	2000	1990	2000	1990	2000	1990	2000	1990	2000	1990	2000
Family Households	61.5	61.3	74.8	72.5	67.4	65.3	75.0	74.5	68.9	62.9	52.9	50.1
Married Couple Households	39.0	37.2	59.5	57.8	29.4	26.0	37.2	36.5	35.5	30.1	41.8	39.3
Female Headed Households	18.0	19.1	9.0	8.9	32.1	33.3	30.8	30.3	25.4	26.0	8.1	7.9
Non-Family Households	38.5	38.7	25.2	27.5	32.6	34.7	25.0	25.5	31.1	37.1	47.1	49.9
Householder Living Alone	32.9	31.9	18.5	20.2	28.3	30.0	20.2	20.0	25.0	30.5	40.8	41.5
Female Living Alone	19.7	18.5	9.1	10.9	17.0	17.8	11.2	10.9	13.9	17.7	25.0	24.5
Total Households	100.0	100.0	100.0	100.0	100.0	100.0	100.0	100.0	100.0	100.0	100.0	100.0

¹ Source: U.S. Census Bureau, 1990 & 2000

EDUCATIONAL ATTAINMENT

High levels of socioeconomic and economic status are positively related to educational attainment. Black women, Latinas, some Asian and Native American women are more likely to be economically disadvantaged and have fewer opportunities for obtaining college degrees than white women.

Educational Attainment of the Female Population by Race and Hispanic Origin

In 2000, 59 percent of all the women who completed four or more years of college were white, compared to 17 percent Black, 13 percent Asian, and 10 percent Hispanic. White women, who were 39 percent of the female population, held 65 percent of the professional and graduate degrees.

The racial composition of women who failed to obtain a high school diploma is almost the reverse of those who completed college. Blacks and Hispanics were the dominant shares of women who failed to complete high school: Black women 35 percent and Latinas 33 percent. (See Table 11)

Table 11

Educational Attainment of the Female Population 25 years and over by Race/Hispanic Origin in New York City: 2000

Education Level	Asian Women	Black Women	Hispanic Women	Native American Women	White Women	All Women
Total	9.6	26.2	23.5	0.4	39.2	100.0
Less than 9th grade	15.1	16.7	46.6	0.7	20.6	100.0
9 to 12 no diploma	7.9	35.3	32.5	0.5	23.4	100.0
High school includes equivalency	7.2	28.8	21.2	0.4	40.9	100.0
Some college no degree	5.7	34.5	23.2	0.3	35.5	100.0
Associates degree	8.3	33.7	22.3	0.4	34.1	100.0
Bachelors and Beyond	12.8	16.5	9.8	0.2	59.0	100.0
Bachelors	14.9	18.2	10.4	0.2	54.5	100.0
Graduate or Professional degree	10.0	14.1	8.9	0.2	65.3	100.0

Note total may not equal 100

Source: U.S. Census Bureau: 2000

Distribution of Educational Attainment Within Groups by Race and Hispanic Origin

About one quarter (26 percent) of the city's female population 25 years and over had completed four or more years of college in 2000, up from 21 percent in 1990. The proportion with less than a high school education dropped from 33 percent to 28 percent. (Table 12)

There is a strong bifurcation among Asian women in educational attainment. Thirty-one (31) percent of Asian women had 13 or more years of higher education in 1990 – the highest for any women's group. By 2000, the proportion increased slightly to 35 percent. An almost equal proportion failed to complete high school – 35 percent in 1990 and 33 percent in 2000.

Black women start, but do not complete, four years of college. Twenty (20) percent had some college or had completed a two-year degree in 2000. Sixteen (16) percent had completed 13 or more years of schooling, up marginally from 13 percent a decade before. The proportion that had not completed high school declined from 35 to 29 percent.

More than half (53 percent) of Hispanic women over 25 had not obtained a high school diploma in 1990 and nearly half in 2000 (46 percent), the highest of any group. Only 8 percent had completed four or more years of college in 1990 and 11 percent in 2000. In both years, the proportion of Hispanic women with college degrees was the lowest of all groups.

Native American women, like Latinas, had low educational attainment. In 2000, 43 percent had not completed high school and only 14 percent had completed 13 years or more of schooling.

In 2000, four out of every ten white females had completed four or more years of college, up from 29 percent in 1990. Only 16 percent failed to complete high school, down from 23 percent a decade before.

Table 12

Educational Attainment within the Female Population 25 years and over by Race/Hispanic Origin in New York City: 1990 & 2000

Educational Level	All Women		Asian Women		Black Women		Hispanic Women		Native American Women		White Women	
	1990	2000	1990	2000	1990	2000	1990	2000	1990	2000	1990	2000
Less than a High School Education	32.6	28.0	34.9	32.4	35.4	29.0	53.1	46.2	35.9	42.7	23.3	15.8
Less than 9th grade	15.1	12.5	22.4	19.8	12.1	8.1	29.2	24.8	16.2	22.6	10.8	6.6
9 to 12 no diploma	17.5	15.5	12.5	12.6	23.3	20.9	23.9	21.4	19.7	20.1	12.5	9.2
High school includes equalivancy	28.2	25.1	19.1	18.7	28.5	27.5	22.8	22.6	25.4	23.6	31.0	26.2
Some college no degree	13.6	15.1	9.3	8.9	17.1	19.8	11.9	14.9	17.8	13.7	12.9	13.6
Associates degree	4.9	5.7	5.6	5.0	6.3	7.3	4.5	5.4	4.1	6.5	4.2	5.0
Bachelors Degree and Beyond	20.7	26.1	31.1	35.0	12.7	16.4	7.7	10.9	16.8	13.5	28.6	39.4
Bachelors Degree	12.1	15.2	21.4	23.7	8.4	10.6	4.8	6.8	10.4	8.5	15.7	21.2
Graduate or Professional Degree	8.6	10.9	9.7	11.3	4.4	5.9	2.9	4.1	6.5	5.0	12.9	18.2
Total	100.0	100.0	100.0	100.0	100.0	100.0	100.0	100.0	100.0	100.0	100.0	100.0

Source: U.S. Census Bureau: 1990 & 2000

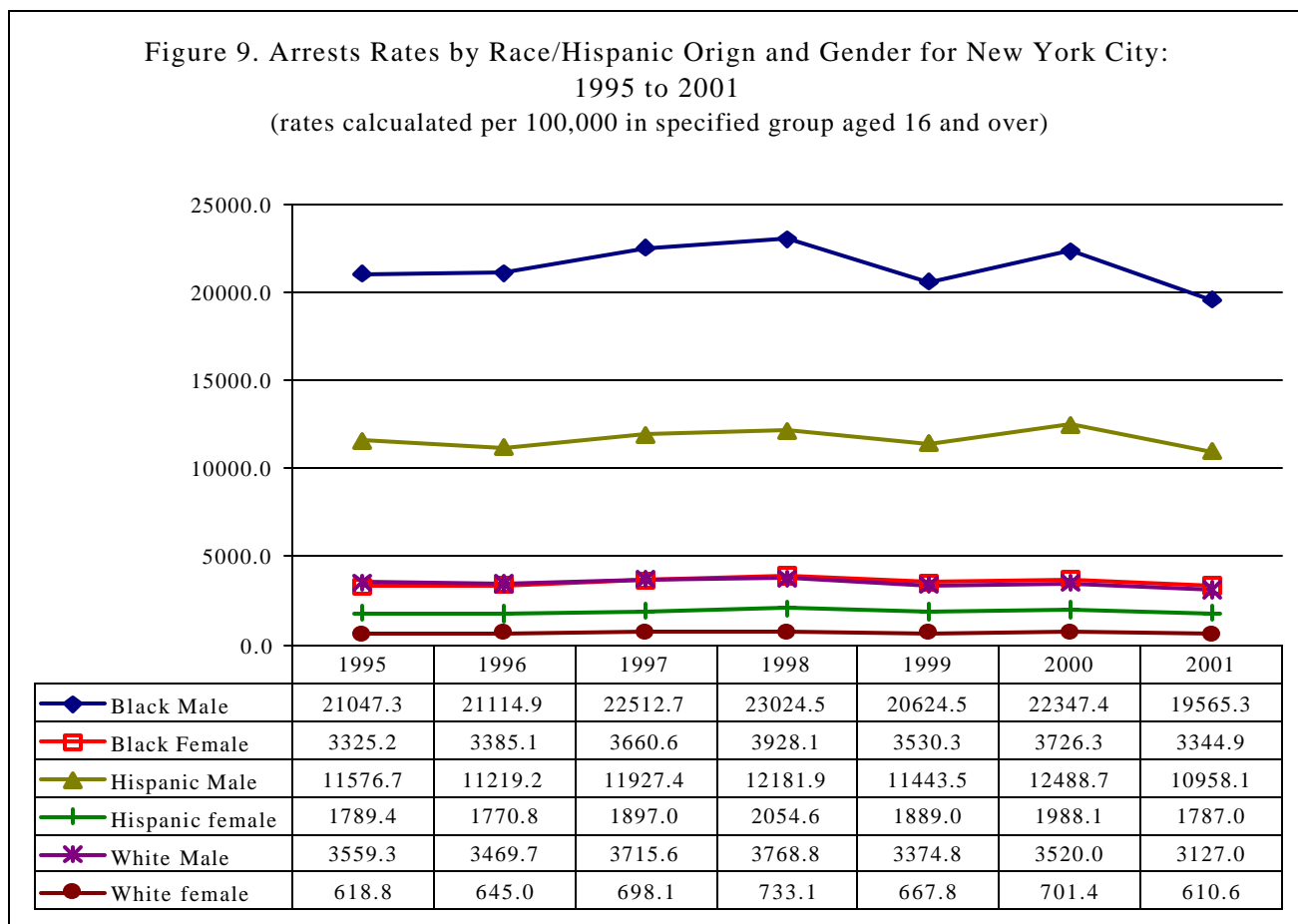
ARRESTS AND INCARCERATION

A variety of factors contribute to differences in women’s involvement in the criminal justice system, including race, economic status, education and residence. The majority of women incarcerated are mothers who lived with and cared for their children before their imprisonment.

Arrest Rates by Race and Gender

Males usually dominate arrest rates. In New York City, however, the arrest rates for Black women – the highest among females – exceeded that of white males.

In 2001, the arrest rate for Black females was 3,344.9 per 100,000 and that of white males was 3,127. Among all groups of both men and women, the arrest rate for Black women was the only one that increased between 1995 and 2001. Latinas in 2001 had an arrest rate of 1,787.0 and white women 610.6. (Figure 9)



Note: Persons may be arrested more than once.

Source: New York State Department of Criminal Justice Services

Share of Arrests among Women By Race and Hispanic Origin

Black women and Latinas, who made up 55 percent of women in the city, constituted 85 percent of all females arrested in 1995 and 2001. In both years, Black women, who were 28 percent of the population, were over half of the women arrested. Latinas, who were 27 percent of the population, were more than a quarter of women arrested. Only 15 percent of the women arrested were white and 4 percent were in the Other category – which includes Asians, Native Americans and persons who did not specify a race or ethnic background. (Table 13)

Leading Causes of Arrests

In 1995, the five leading causes of arrests for women were controlled substances, assault, larceny, other [unspecified] offenses, and other theft. In 2001, prostitution replaced other theft as a leading reason for arrests. Black women and Latinas dominated arrests in each of these categories between 1995 and 2001, with a major increase in arrests of Black women for prostitution (up from 38 percent to 46 percent of all women arrested). Arrests of Other women also increased for the broad category of other thefts. (Table 13)

Table 13

Leading Causes of Female Arrests by Race/Hispanic Origin in New York City: 1995 & 2001

Offense	Black Women		Hispanic Women		White Women		Other Women		All Women	
	1995	2001	1995	2001	1995	2001	1995	2001	1995	2001
Total	53.9	53.4	28.7	28.2	15.2	14.7	2.2	3.7	100.0	100.0
Assault	63.4	59.3	24.5	28.6	10.5	9.7	1.6	2.4	100.0	100.0
Controlled Substances	54.3	57.6	29.8	28.0	15.6	14.0	0.3	0.4	100.0	100.0
Larceny	52.6	49.2	28.3	26.3	16.0	19.5	3.1	5.0	100.0	100.0
Other (Unspecified) Causes	37.6	45.1	39.9	29.8	17.9	16.9	4.6	8.2	100.0	100.0
Other Theft	59.3	46.2	24.5	26.6	12.8	16.0	3.4	11.2	100.0	100.0
Prostitution	38.4	46.9	31.5	31.9	23.6	15.0	6.5	6.2	100.0	100.0

Source: New York State Department of Criminal Justice Services

Distribution of Arrests Among Women by Race and Hispanic Origin

Among Black women arrested in 2001, 24 percent were arrested for controlled substances, 21 percent for assaults, 13 percent for larceny, 11 percent for other [unspecified] causes, and 9 percent for prostitution. The major shift from 1995 was the decline in arrests for controlled substances and other thefts and the rise in prostitution and assaults. (Table 14)

The leading causes of arrest for Latinas were the same as for Blacks. In 2001, 22 percent of Latinas were arrested for controlled substances, 19 percent for assault, 13 percent for larceny and 14 percent for other [unspecified] causes. The major shift was the decline in controlled substances and the rise in prostitution and assaults.

The patterns changed among the ethnic category Other. The leading causes of arrest included other [unspecified] causes (29 percent), larceny (19 percent), and prostitution (17 percent) – the highest among all groups. Other theft accounted for 15 percent and assaults for 12 percent. Compared to Blacks and Latinas, this group was less likely to be arrested for controlled substances.

Controlled substances accounted for 21 percent of arrests for white women, larceny for 18 percent, other [unspecified] causes for 15 percent, assault for 12 percent and prostitution for 10 percent. There were declines in arrests for prostitution and controlled substances and increases for assaults.

Table 14

Distribution of Leading Causes of Arrests for Females by Race/Hispanic Origin in New York City: 1995 & 2001

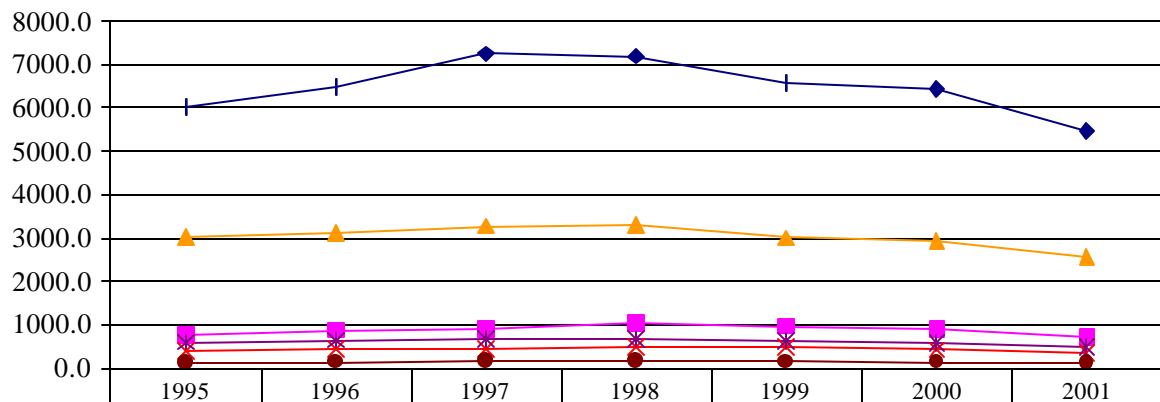
Offense	All Women		Black Women		Hispanic Women		White Women		Other Women	
	1995	2001	1995	2001	1995	2001	1995	2001	1995	2001
Assault	14.6	18.9	17.1	21.0	12.4	19.1	10.0	12.4	10.5	12.3
Controlled Substances	30.9	21.9	30.5	23.6	31.5	21.7	31.3	20.8	3.9	2.0
Larceny	14.0	13.6	13.8	12.5	13.9	12.7	15.0	18.1	20.3	18.7
Other (unspecified) Causes	9.7	12.9	6.9	10.9	13.8	13.7	11.7	14.8	21.0	29.0
Other Theft	9.0	4.7	10.0	4.1	7.7	4.4	7.7	5.1	14.1	14.5
Prostitution	7.0	9.8	5.2	8.6	8.0	11.1	11.4	10.0	22.0	16.7
sub total	85.2	81.8	83.5	80.7	87.3	82.7	87.1	81.2	91.8	93.2

Source: New York State Department of Criminal Justice Services

Incarceration Rates by Race and Gender

The incarceration rates for all women declined between 1995 and 2001. Even with the declines, the incarceration rate for Black women (730.7 per 100,000), like the arrest rate, exceeded that for white males (488.3 per 100,000). The rate for Latinas was 341.8 and for white women 114.9. (Figure 10)

Figure 10. Incarceration Rates by Race/Hispanic Origin and Gender for New York City: 1995 to 2001
(rates calculated per 100,000 in specified group aged 16 and over)

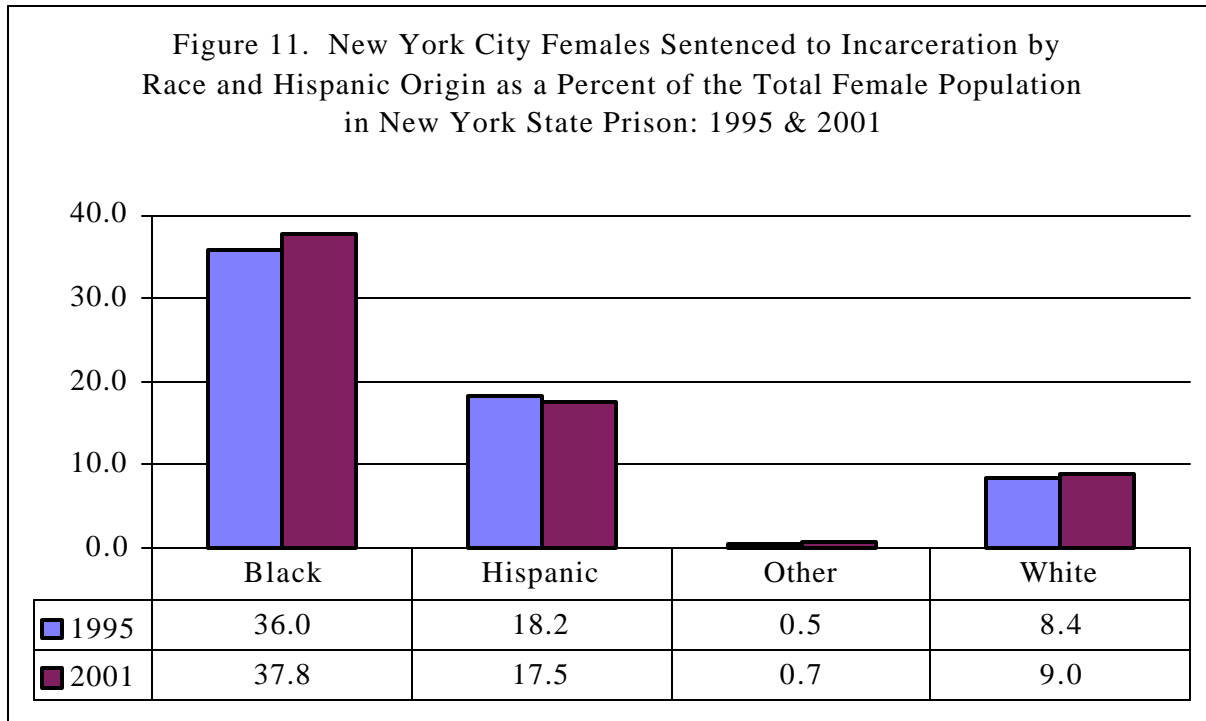


—+— Black Male	6029.5	6491.4	7251.0	7188.6	6562.2	6431.6	5468.3
—■— Black Female	769.1	876.2	911.7	1037.9	967.2	910.5	730.7
—▲— Hispanic Male	3017.8	3121.9	3278.7	3309.0	3001.6	2926.2	2551.1
—×— Hispanic Female	393.7	429.8	433.4	497.5	474.8	427.4	341.8
—*— White Male	597.7	646.3	669.2	677.2	620.8	590.3	488.3
—●— White Female	118.3	141.2	161.3	159.1	143.0	141.1	114.9

Source: New York State Department of Criminal Justice Services

The Share of New York City Women Incarcerated in New York State Prisons by Race and Hispanic Origin

As shown in Figure 11, Black women and Latinas from New York City, who were only 32 percent of the women in the state, accounted for roughly 55 percent of all incarcerated women in state prisons in both 1995 and 2001. Black women were 38 percent and Latinas 18 percent.



Source: New York State Department of Criminal Justice Services

The Share of Incarcerated Women by Race and Hispanic Origin from New York City

Black women (58 percent) and Latinas (27 percent) accounted for 84 percent of the women arrested and sentenced to prison from New York City in 2001. White women accounted for 14 percent and Others accounted for 1 percent. (Table 15)

When examined by offense, Black and Hispanic women were 80 percent or more of all the women incarcerated in each of the major categories (including 90 percent of those arrested and incarcerated for assault). The only exception to the pattern was driving while intoxicated (DWI), where white women made up half the incarcerated women. (Table 15)

Table 15

Racial and Ethnic Composition of Females from New York City Arrested and Sentenced to New York State prisons by Offense: 1995 and 2001

Offense	Black Women		Hispanic Women		White Women		Other Women		All Women	
	1995	2001	1995	2001	1995	2001	1995	2001	1995	2001
Total	57.1	58.2	28.9	27.0	13.2	13.8	0.8	1.0	100.0	100.0
Assault	78.3	72.2	16.7	20.2	4.2	7.2	0.8	0.4	100.0	100.0
Burglary	63.0	57.7	25.2	28.5	11.6	13.6	0.2	0.2	100.0	100.0
Controlled Substances	53.7	57.6	34.3	28.4	11.8	13.9	0.2	0.1	100.0	100.0
DWI	13.8	30.0	17.2	10.0	69.0	50.0	0.0	10.0	100.0	100.0
Homicide	69.2	58.3	20.5	25.0	7.7	16.7	2.6	0.0	100.0	100.0
Larceny	66.9	60.3	20.3	24.5	12.5	14.4	0.3	0.8	100.0	100.0
Marijuana	81.4	69.3	8.5	24.0	8.5	6.2	1.6	0.5	100.0	100.0
Mischief	73.7	62.5	14.0	31.2	10.5	6.3	1.8	0.0	100.0	100.0
Other Causes	57.1	57.2	28.2	27.0	12.6	12.4	2.1	3.4	100.0	100.0
Other Theft	69.9	67.6	17.4	18.6	12.4	13.8	0.3	0.0	100.0	100.0
Prostitution	45.6	55.3	32.7	27.3	20.9	16.7	0.8	0.7	100.0	100.0
Robbery	63.5	60.0	28.9	25.8	6.9	14.2	0.7	0.0	100.0	100.0
Sex Offense	0.0	66.7	100.0	33.3	0.0	0.0	0.0	0.0	100.0	100.0
Weapons	64.7	63.8	23.5	31.9	9.8	4.3	2.0	0.0	100.0	100.0

Source: New York State Department of Criminal Justice Services

Reasons for Incarceration Among Women by Race and Hispanic Origin

Among Black females, nearly three fourths (72 percent) of all the incarcerations in 2001 were for controlled substances, other [unspecified] causes and prostitution. Among Latinas, the same three causes accounted for 75 percent of their incarcerations.

For white females, 75 percent of their incarcerations were, in rank order: controlled substances, prostitution and other [unspecified] causes. By contrast, for women designated as Other, two offenses (prostitution and other [unspecific] causes) accounted for 83 percent. (Table 16)

Table 16

Distribution of Females by Race/Hispanic Origin from New York City by Leading Causes of Incarceration: 1995 & 2001

Offense	All Women		Black Women		Hispanic Women		White Women		Other Women	
	1995	2001	1995	2001	1995	2001	1995	2001	1995	2001
Burglary	5.3	9.0	5.9	8.9	4.6	9.5	5.3	8.9	1.1	1.9
Controlled Substances	36.1	32.2	34.0	31.9	42.8	33.9	32.2	32.2	8.0	4.7
Larceny	10.8	9.6	12.7	10.0	7.6	8.8	10.2	10.0	4.6	7.5
Other (unspecified) Causes	21.4	21.0	21.4	20.6	20.9	21.0	20.3	18.8	58.6	70.1
Other Theft	5.8	3.3	7.2	3.8	3.5	2.3	5.5	3.3	2.3	0.0
Prostitution	14.7	19.7	11.7	18.7	16.6	19.9	23.1	23.7	17.2	13.1
sub total	94.1	94.8	92.9	93.9	96.0	95.4	96.6	96.9	91.8	97.3

Source: New York State Department of Criminal Justice Services

Share of Incarcerated Women by Age and Race and Hispanic Origin

In 2001, nearly 60 percent of the women incarcerated between the ages of 16 and 24, were Black. Latinas accounted for 27 percent of this cohort and 14 percent were white. In the cohort 25 and over, Black women were 58 percent, 27 percent were Latinas and 14 percent were white. (Table 17)

Table 17

The Share of Women Incarcerated by Race/Hispanic Origin: 1995 & 2001

Age Cohorts	Black Women		Hispanic Women		White Women		Other Women		All Women	
	1995	2001	1995	2001	1995	2001	1995	2001	1995	2001
Total	57.1	58.2	28.9	27.0	13.3	13.8	0.8	1.0	100.0	100.0
16 to 24	53.0	58.7	33.3	26.7	12.6	13.5	1.0	0.8	100.0	100.0
16 to 19	64.7	62.6	28.1	25.6	6.4	10.8	0.8	1.0	100.0	100.0
20 to 24	48.0	57.2	35.6	27.2	15.3	14.8	1.2	0.7	100.0	100.0
Over 25	57.8	58.0	28.1	27.0	13.4	13.9	0.7	1.1	100.0	100.0

Source: New York State Department of Criminal Justice Services

Age Distribution of Incarcerated Females from New York City by Race and Hispanic Origin and Age in New York State Prisons

The proportion of young women from New York City in New York State prisons is increasing. In 1995, women 16 to 24 were 15 percent of total females incarcerated. By 2001, they were 19 percent, and the population over 25 had decreased slightly. In 1995, 85 percent of females incarcerated were over 25. In 2001 the proportion decreased to 81 percent. (Table 18)

Among Black females from New York City incarcerated in state prisons, 14 percent were 16 to 24 in 1995 and 19 percent were in that age cohort in 2001. Black women over 25 were 81 percent of the incarcerated female population, a decrease from 86 percent in 1995.

The distribution of Latinas 16 to 24 incarcerated in state prisons remained relatively stable between 1995 and 2001 (roughly 18 percent in both years). The proportion of Latinas over 25 also remained stable (82 percent in both years).

Among Others, there was a large decline in the young population (16 to 24) of women incarcerated, from 21 percent in 1995 to 15 percent in 2001. However, the proportion of women over 25 increased from 79 percent to 85 percent in 2001.

The proportion of white women 16 to 24 incarcerated increased to 18 percent in 2001 from 15 percent in 1995. Women over 25 declined, from 86 percent to 82 percent in 2001.

Table 18

Distribution of Incarcerated Females from New York City by Race/Hispanic Origin and Age: 1995 & 2001

Age Cohorts	All Women		Black Women		Hispanic Women		White Women		Other Women	
	1995	2001	1995	2001	1995	2001	1995	2001	1995	2001
16 to 24	15.3	18.6	14.3	18.9	17.7	18.5	14.6	18.2	20.7	15.0
Over 25	84.7	81.4	85.7	81.4	82.3	81.5	85.4	81.8	79.3	85.0
Total	100.0	100.0	100.0	100.3	100.0	100.0	100.0	100.0	100.0	100.0

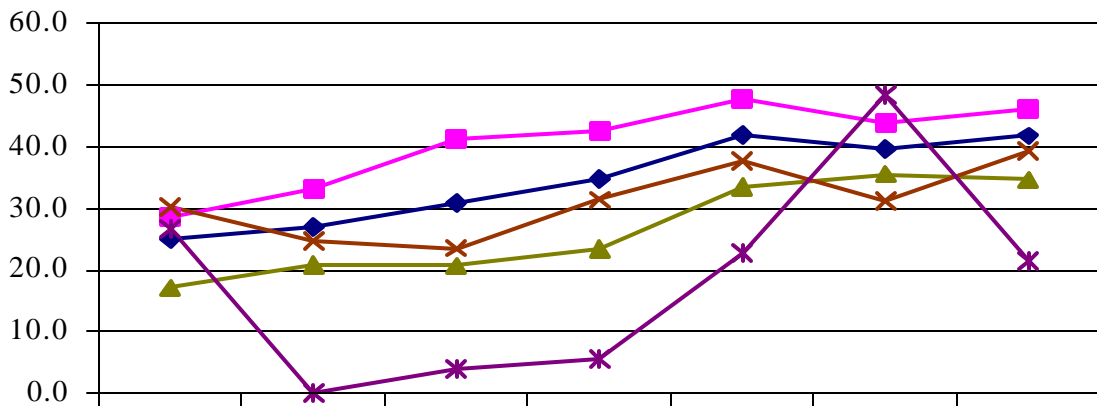
Source: New York State Department of Criminal Justice Services

Distribution of Females by Race and Hispanic Origin and Age Incarcerated for Prostitution

In examining the causes of incarceration, the most dramatic trend was the increase of young women 16 to 24 incarcerated for prostitution. In 1995, this age group made up 25 percent of all New York City women arrested and sentenced to prison. By 2001, the proportion had jumped to 42 percent.

Among Black women 16 to 24, the proportion incarcerated for prostitution increased from 29 to 46 percent between 1995 and 2001, among Latinas it increased from 17 to 35 percent, and for young white women from 30 to 39 percent. The proportion among Others in this age group incarcerated for prostitution declined from 27 to 21 percent.

Figure 12. Distribution of Females Incarcerated for Prostitution Aged 16 to 24 by Race/Hispanic Origin from New York City:1995 to 2001



	1995	1996	1997	1998	1999	2000	2001
◆ Total	25.2	27.0	31.0	34.7	42.0	39.6	41.8
■ Black	28.6	33.1	41.3	42.6	47.8	43.9	46.3
▲ Hispanic	17.2	20.9	20.7	23.4	33.5	35.6	34.7
✕ White	30.3	24.8	23.6	31.5	37.8	31.2	39.4
✱ Other	26.7	0.0	4.0	5.6	22.9	48.4	21.4

Source: New York State Department Of Criminal Justice Services

EMPLOYMENT

Women of color face the double bind of racial and gender discrimination in the labor market. Exaggerating these barriers is lack of access to adequate training and education, which has resulted in high levels of unemployment, lower wages and occupational segregation.

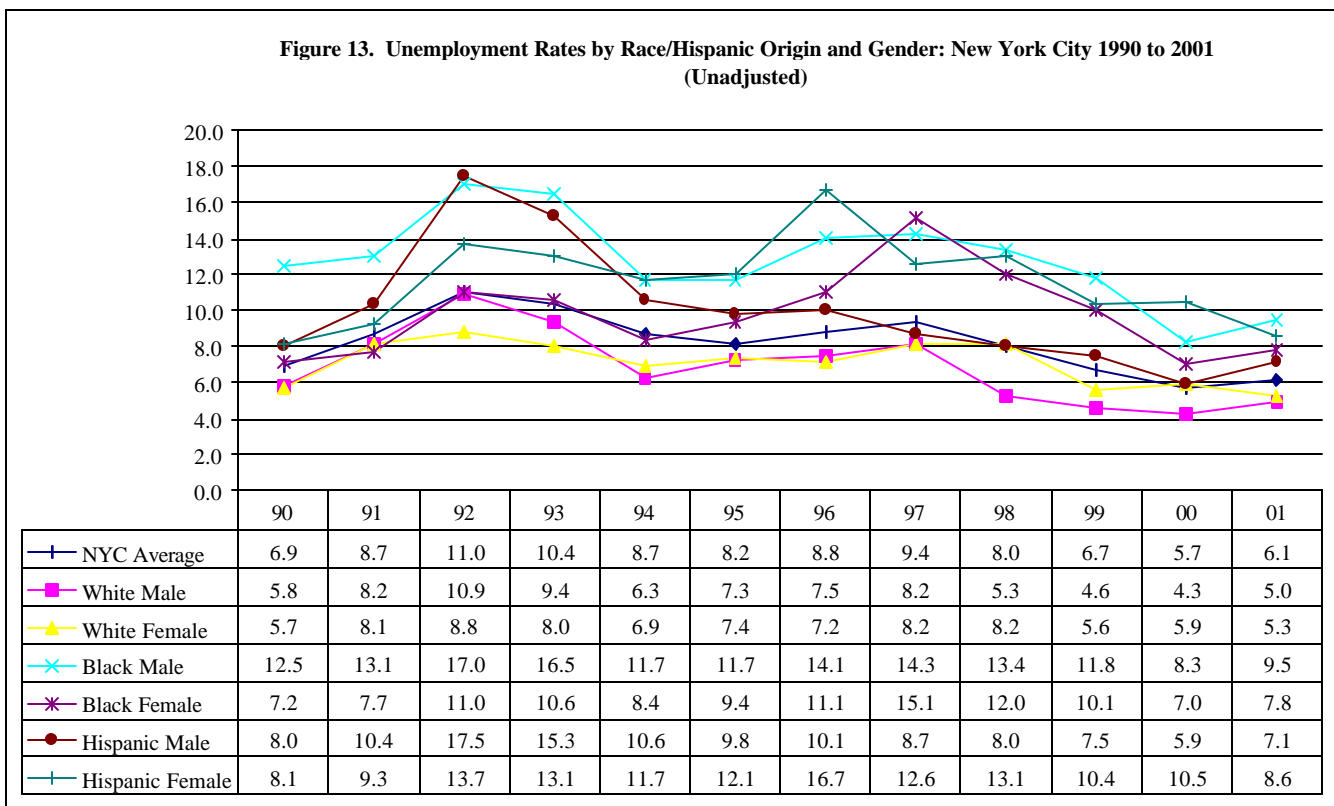
Inadequate employment and earnings are particularly devastating for a growing number of women of color who are the sole supporters of their families or whose income is necessary to complement the earnings of mates in order to stay above the poverty level. The decline in middle wage jobs and an increase and competition for low wage jobs has added to the problems of these women.

Unemployment Rates for Women by Race and Hispanic Origin

Black women and Latinas sustained the highest average unemployment rates of all groups during the 1990s. Indeed, as Figure 13 reveals, the unemployment rates of Latinas and Black women peaked during the period. In 1996, the Latina unemployment rate reached 17 percent. A year later, the rate for Black women climbed to 15 percent. Both rates were the highest for these women since local unemployment data was divided by race and gender.

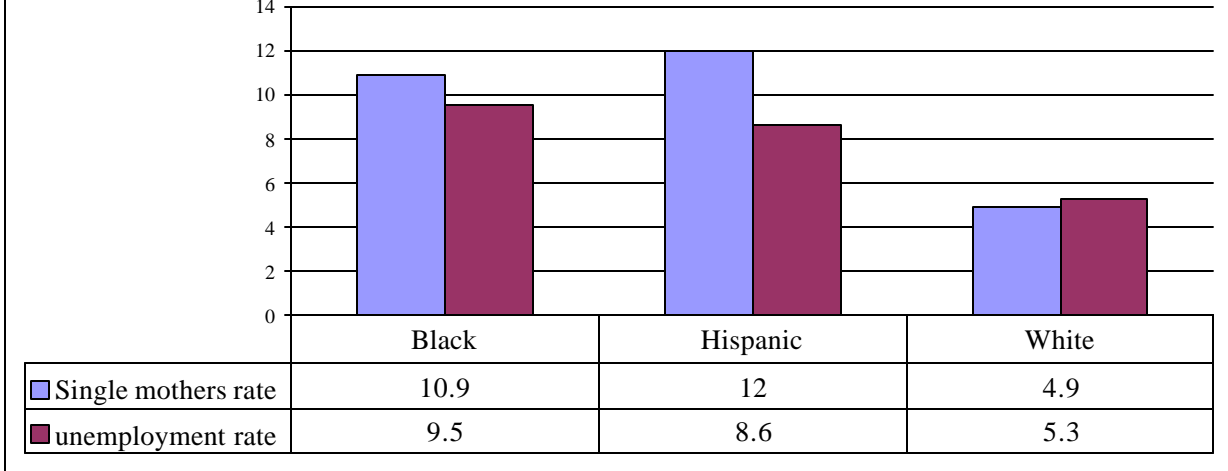
While the unemployment rates for Black women and Latinas declined at the end of the decade, the rate for Latinas (10.5 percent) was higher than every group. The 7 percent rate for Black women fell closer in line with their unemployment rate at the beginning of the decade.

As Figure 14 illustrates, single Black and Latina mothers had higher unemployment rates than the general unemployment rate for Black women and Latinas. Hispanic mothers had an unemployment rate of 12 percent in 2001, compared to the 8.6 rate for the all Hispanic females. Single Black mothers had an unemployment rate of 10.9 percent, compared to 9.5 for the group. The unemployment rate of 4.9 for single white mothers in 2001 was lower than the overall rate for white women (5.3) in the same year.



Source: New York State Dept. of Labor, Office of Research and Statistics

Figure 14. Unemployment Rates for All Females and Single Mothers by Race/Hispanic Origin in New York City: 2001



Source: Levitan, Mark. "Mothers Work: Single Mothers Employment, Earnings and Poverty in the Age of Welfare Reform and the New York State Dept. of Labor, Office of Research and Statistics

Women in the Private Sector by Race and Hispanic Origin

In the last decade white women made remarkable strides in the private sector, as they continued their move out of low-wage industries and clerical jobs into higher paying managerial and professional occupations. The path for Black women and Latinas – and to a lesser extent Asian women – has been more arduous.

Industrial Segmentation

In 2000, according to Equal Employment Opportunity Commission (EEOC) data for industries with 100 or more employees in New York City, women of color in the private sector were narrowly confined – segmented – in industries and occupations. Close to five out of every ten (48 percent) of Black women worked in health services, banks and business services. Thirty-six (36) percent were employed in health services alone. Nearly 40 percent of all Latinas work in health services, business services and banks. Health services accounted for 24 percent of their employment. Thirty-four (34) percent of Asian women were employed in health services and nine percent worked in the securities industry. Six (6) percent worked in business services.

White women’s employment was much more diverse. Only 18 percent were concentrated in health services, and they occupied a significant presence in securities and other high-paying industries that offer greater benefits. (Tables 19-22) ¹

¹ From a forthcoming study by Walter Stafford and Edwin Dei

Table 19
Employment Distribution for Black Females in the
Top Ten industries in New York City: 2000

Industry	Total	% Total
All Industries	177,593	
Health Services	63,839	35.5
Depository Institutions	11,064	6.2
Business Services	10,218	5.8
Insurance Carriers	9,624	5.4
Communications	8,691	4.9
Merchandise Stores	8,085	4.6
Social Services	7,628	4.3
Securities	5,267	3.0
Legal Services	5,017	2.8
Hotels & Other Lodging Places	4,671	2.6
Total Listed Industries	134104	75.1

Source: Equal Employment Opportunity Commission (EEO1)
Washington D.C. 2000

Table 21
Employment Distribution for Asian Females in the
Top Ten industries in New York City: 2000

Industry	Total	% Total
All Industries	58,906	
Health Services	20,299	34.5
Securities	5,398	9.2
Business Services	3,427	5.8
Eng., Acct. & Other Prof. Services	3,197	5.4
Insurance Carriers	1935	3.3
Printing & Publishing	1,748	3.0
Legal Services	1,123	2.8
Merchandise Stores	1,600	2.7
Hotels & Other Lodging Places	1419	2.4
Social Services	811	1.4
Total Listed Industries	40,957	70.5

Source: Equal Employment Opportunity Commission (EEO1)
Washington D.C. 2000

Table 20
Employment Distribution for Hispanic Females in the
Top Ten industries in New York City: 2000

Industry	Total	% Total
All Industries	94,814	
Health Services	22,596	23.8
Business Services	8,697	9.2
Depository Institutions	5,475	5.8
Securities	5,120	5.4
Insurance Carriers	4,690	5.0
Legal Services	3,614	3.8
Communications	2,780	2.9
Merchandise Stores	2,695	2.8
Social Services	2,573	2.7
Hotels & Other Lodging Places	2,291	2.4
Total Listed Industries	60,531	63.8

Source: Equal Employment Opportunity Commission (EEO1)
Washington D.C. 2000

Table 22.
Employment Distribution for White Females in the
Top Ten industries in New York City: 2000

Industry	Total	% Total
All Industries	326,163	
Health	59,605	18.3
Business Services	32,066	9.8
Securities & Commodity Dealers &	30,324	9.3
Printing & Publishing	21,133	6.5
Depository Institutions	18,932	5.8
Eng., Acct. & Other Prof. Services	16,042	4.9
Legal Services	15,601	4.8
Communications	11,237	3.5
Insurance Carriers	11,096	3.4
General Merchandise Stores	10,713	3.3
Total Listed Industries	226,749	69.5

Source: Equal Employment Opportunity Commission (EEO1)
Washington D.C. 2000

Occupational Segmentation for Women in the Private Sector by Race and Gender

The proportion of Black women and Latinas employed as officials and managers lags behind every group in the EEOC survey. While 27 percent of all white males and 19 percent of all white females were employed as managers in 2000, only seven percent of Black women and six percent of Latinas worked in these occupations. Ten (10) percent of Asian women worked as managers.

Women of color fared better as professionals than they did as managers. Nearly half (47 percent) of all Asian women worked as professionals – the highest of any group. Seventeen (17) percent of Black females and 13 percent of Latinas worked in these occupations. However, 56 percent of all Black females and an equal proportion of Latinas were employed in the lower-paying service and clerical areas.

Table 23

Occupational Distribution of New York City’s Private Sector Workforce by Race/Hispanic Origin and Gender: 2000

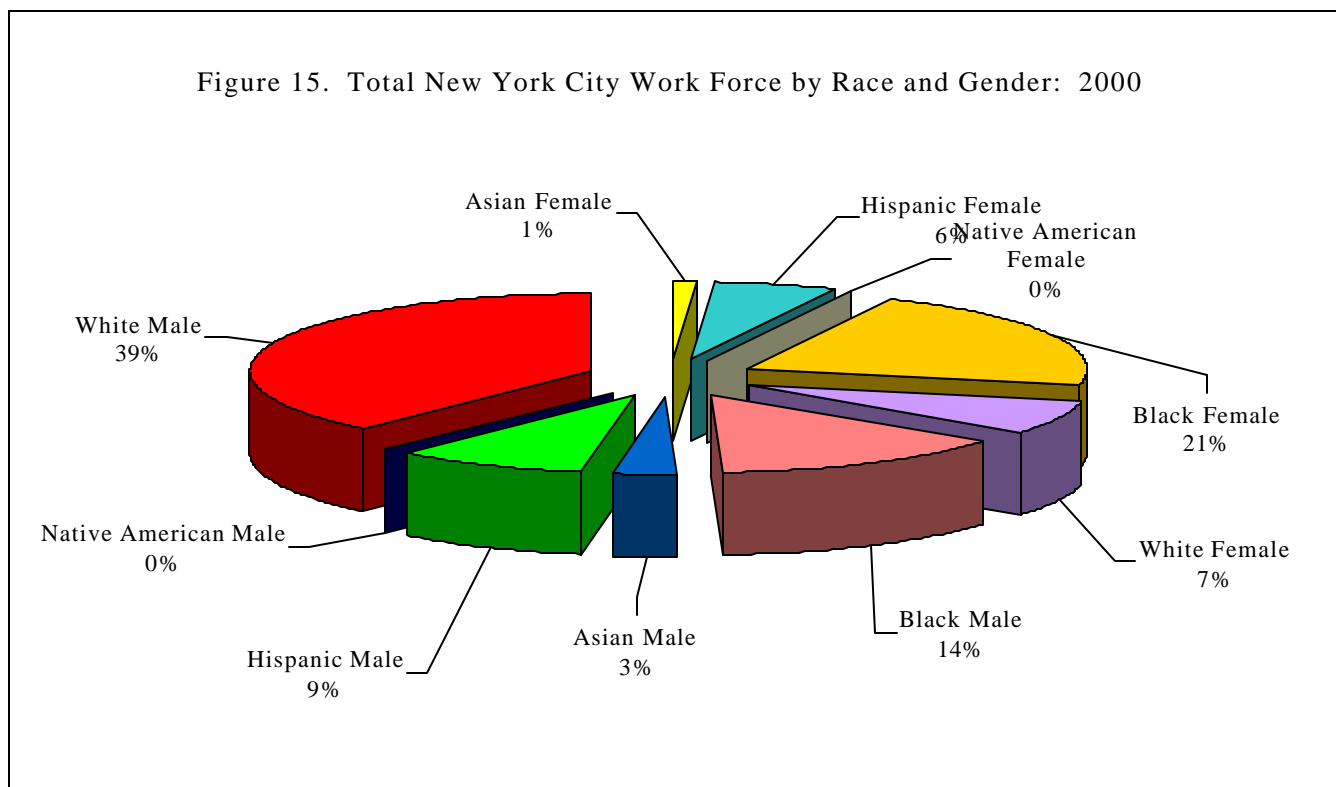
Occupation	Total Employees (%)	Total Men	Total Women	Total White	White Men	White Women	Total Black	Black Men	Black Women
Officials & Managers	16.4	19.5	13.2	23.6	27.1	19.4	7.0	7.7	6.5
Professionals	25.1	23.7	26.4	30.7	29.6	32.0	14.2	10.3	17.0
Clerical & Office Workers	18.9	10.3	27.6	15.9	8.1	25.3	24.7	15.1	31.4
Laborers	3.1	4.3	1.9	1.4	1.9	0.9	4.6	8.2	2.1
Service Workers	13.6	13.4	13.8	5.6	5.4	6.0	26.2	27.3	25.5
Craft Workers	4.0	7.0	0.9	4.6	7.8	0.8	3.4	6.6	1.1
Sales Workers	9.4	8.9	9.8	9.8	9.7	10.0	9.3	8.5	9.8
Operatives	4.5	6.7	2.2	3.6	4.7	2.3	5.2	10.1	1.7
Total	100.0	100.0	100.0	100.0	100.0	100.0	100.0	100.0	100.0

Occupation	Total Hispanic	Hispanic Men	Hispanic Women	Total Asian	Asian Men	Asian Women	Total Native American	Native American Men	Native American Women
Officials & Managers	7.0	7.6	6.3	12.7	15.1	10.3	10.4	13.4	6.9
Professionals	10.8	9.2	12.6	43.0	39.4	46.5	17.8	18.0	17.6
Clerical & Office Workers	22.6	12.8	33.0	15.7	10.3	20.8	16.8	10.1	24.8
Laborers	7.8	10.0	5.6	1.7	2.1	1.3	4.3	5.6	2.8
Service Workers	26.1	28.7	23.4	8.6	10.3	7.0	15.4	17.6	12.8
Craft Workers	4.0	6.7	1.2	2.1	3.3	1.0	4.5	7.7	0.7
Sales Workers	9.7	8.3	11.2	5.7	5.7	5.8	19.9	14.5	26.5
Operatives	7.6	11.5	3.5	2.7	4.1	1.3	6.6	8.4	4.6
Total	100.0	100.0	100.0	100.0	100.0	100.0	100.0	100.0	100.0

Source: Equal Employment Opportunity Commission (EEO1), Washington D.C: 2000

Mayoral Workforce

The racial and gender employment patterns in government mirror those in the private sector. The principal difference is the presence of a large number of Black women in Mayoral agencies, second only to white males. In 2000, white males constituted 39 percent of city employees and Black females 21 percent. (Figure 15) However, as in the private sector, Black females are largely segmented in a few agencies and in lower-paying occupations.



Source: Equal Employment Practices Commission, Annual Report: New York City, 2000

Share of Occupations by Race and Hispanic Origin

Although Black women were 21 percent of all Mayoral employees, they were only four percent of the city's administrators in 2000. Latinas were three percent and Asian and Native American women were one percent or less. White females, who were seven percent of the Mayoral workforce, were 15 percent of the administrators. Among managers, Black women were 12 percent and Hispanics were 3 percent. Asian and Native American women were less than two percent.

Social work continues to provide one of the traditional avenues for the employment of Black women. In 2000, nearly half of the social workers were Black females. This venue has also become important for Latinas. Eleven percent of the social workers were Latinas. By contrast, only 2 percent were Asian and less than one percent were Native American. White women have largely abandoned this occupation. As Table 24 shows, white women were only 6 percent of this job category.

While white women have abandoned social work, they now constitute a dominant share of the lawyers. About a quarter of lawyers in the Mayoral agencies were white women. Nine (9) percent were Black women and three percent were Hispanic and Asian women.

A mainstay for female employment, clerical work – one of the lowest-paying jobs in city government – remains a major occupation for Black women. Over half, (53 percent) of these employees were Black women. Latinas were 13 percent, white women were 10 percent, and Asian women were two percent. (Table 24)

One of the occupations that remains off-limits to women of any race is firefighting. Reflecting historical trends, white males still hold over 90 percent of these jobs. The other job category dominated by white men is crafts, where white males control 7 out of 10 jobs.

Unlike the firefighters, the police have become more diverse. Forty-three (43) percent of the police were white males, 13 percent were Black females, and 4 percent were Latinas and white women. Less than one percent were Asian or Native American women.

Table 24

Share of Women by Race/Hispanic Origin for Selected Mayoral Occupations in New York City: 2000

Selected Job Groups	Women					Men					Total
	Asian	Black	Hispanic	Native American	White	Asian	Black	Hispanic	Native American	White	
Administrators	1.0	4.1	3.1	0.0	15.0	1.0	8.3	5.2	0.5	60.6	100.0
Managers	1.4	12.0	3.0	0.0	17.2	5.2	9.9	4.7	0.1	45.6	100.0
Social Workers	1.6	48.4	11.0	0.2	6.3	1.7	19.6	4.3	0.1	6.0	100.0
Lawyers	2.5	8.5	3.3	0.1	44.2	1.7	3.6	1.6	0.0	34.0	100.0
Clerical Supervisors	2.0	52.4	10.3	0.4	16.5	1.2	7.6	2.9	0.0	5.7	100.0
Clerical	2.2	53.3	13.5	0.3	10.1	1.6	8.7	3.2	0.0	5.6	100.0
Fire Fighters	0.0	0.2	0.0	0.0	0.3	0.6	3.9	3.6	0.1	91.1	100.0
Police	0.2	13.0	4.4	0.2	4.4	1.5	16.6	15.5	0.2	42.6	100.0
Crafts	0.1	0.7	0.3	0.0	0.8	4.1	13.2	8.6	0.2	70.7	100.0

Source: Equal Employment Practices Commission. Annual Report: New York City 2000

Note: Total may not add to 100 due to the exclusion of the Other and Unknown categories

Distribution of Women by Race and Hispanic Origin by Selected Mayoral Agencies

The highest proportion of women of color is concentrated in agencies that have traditionally been responsible for social welfare. However, there has been a steady growth of women of color in the Police Department. A sizeable percentage of these women have been absorbed into clerical jobs or they work as guards. (See Tables 25-28)

One third of all white women (32.8 percent) were employed in the Police Department. The Department of Social Services and the Administration for Children’s Services accounted for an additional 17 percent of their employment.

While 21 percent of all Black women worked in the Police Department, their major employment base has remained the Departments of Social Services and Administration for Children’s Services. These two agencies accounted for 35 percent of their employment. Both of these agencies have a high proportion of lower-paid employees.

Nearly one-third (31 percent) of all Latinas worked in the Police Department. Twenty-eight (28) percent were employed in the Departments of Social Services and Administration for Children’s Services.

Twenty-two (22) percent of all Asian women worked in the Department of Social Services. However, unlike Black women and Latinas, a higher proportion of these women worked in the Department of Health. Fifteen percent were employed in the Department of Health and 12 percent in the Police Department.

Table 25
Employment Distribution for Asian Females in the Top Ten Mayoral Agencies in New York City: 2000

Agency	Total	% Total
Total Employment	2,082	
Department of Social Services	451	21.7
Department of Health	314	15.1
Police Department	243	11.7
Department of Environmental Protection	148	7.1
Administration For Children's Services	134	6.4
Department of Finance	124	6.0
Department of Housing Pres. & Dev.	68	3.3
Department for the Aging	51	2.4
Office of the Comptroller	47	2.3
Office of Mangement & Budget	43	2.1
Total Listed Agencies	1623	78.0

Source: Equal Employment Practices Commission, Annual Report: New York City 2000

Table 26
Employment Distribution for Black Females in the Top Ten Mayoral Agencies in New York City:

Agency	Total	% Total
Total Employment	31,162	
Department of Social Services	6985	22.4
Police Department	6664	21.4
Administration for Children's Services	3933	12.6
Department of Corrections	3522	11.3
Department of Health	2172	7.0
Department of Housing Pres.& Dev.	772	2.5
Department of Probation	744	2.4
Department of Finance	648	2.1
Department of Environment Protection	628	2.0
Department of Parks & Recreation	580	1.9
Total Listed Agencies	26648	85.5

Source: Equal Employment Practices Commission, Annual Report: New York City 2000

Table 27
 Employment Distribution for Hispanic Females
 in the Top Ten Mayoral Agencies in New York
 City: 2000

Agency	Total	% Total
Total Employment	8,706	
Police Department	2707	31.1
Department of Social Services	1766	20.3
Administration For Children's Services	693	8.0
Department of Corrections	591	6.8
Department of Health	490	5.6
Department of Housing Presv.& Dev	247	2.8
Department of Environmental Protection	223	2.6
Fire Department	194	2.2
Department of Parks & Recreation	159	1.8
Department of Probation	157	1.8
Total Listed Agencies	7227	83.0

Source: Equal Employment Practices Commission, Annual Report:
 New York City, 2000

Table 28
 Employment Distribution for White Females in the
 Top Ten Mayoral Agencies in New York City:
 2000

Agency	Total	% Total
Total Employment	11,112	
Police Department	3640	32.8
Department of Social Services	954	8.6
Administration for Children's Services	942	8.5
Department of Health	731	6.6
Department of Environmental Protection	600	5.4
Fire Department	453	4.1
Department of Parks & Recreation	448	4.0
Law Department	395	3.6
Dist. Atty-NY County	289	2.6
Department of Finance	270	2.4
Total Listed Agencies	8722	78.5

Source: Equal Employment Practices Commission, Annual Report:
 New York City, 2000

INCOME, POVERTY, AND WELFARE

Despite the economic growth of the 1990s, women of color – mainly Black women and Latinas – continue to lag behind whites of both genders in income and to face almost intractable poverty. Further complicating the problems of poor women was the passage of the 1996 Personal Responsibility and Work Opportunity Reconciliation Act. One of the most controversial programs of the 20th century, the legislation eliminated entitlements for eligible families and limited assistance to five years over a lifetime. The elimination of these entitlements paralleled the emergence of women of color as the country’s major welfare recipients.

Income and Wages

Between 1990 and 2000, the median family incomes of Asians and Blacks declined, while rising for Latinos – the group with the lowest family incomes – and for whites – the group with the highest. (Table 29) As Table 30 shows, the ratio of Asian to white income declined from 71 to 67 percent and the ratio of Black to white income from 58 to 56 percent. The ratio of Latinos to whites increased slightly from 45 to 46 percent.

Table 29

Percent Change in Median Family Income by Race/Hispanic Origin in New York City and Boroughs: 1990 & 2000

Area Name	All Families			Asian Families			Black Families		
	1990	2000	Percent Change	1990	2000	Percent Change	1990	2000	Percent Change
NYC	\$44,856	\$41,887	-6.6%	\$43,662	\$42,199	-3.4%	\$35,732	\$35,409	-0.9%
Bronx	\$33,262	\$30,682	-7.8%	\$36,983	\$40,809	10.3%	\$32,898	\$31,452	-4.4%
Brooklyn	\$39,208	\$36,188	-7.7%	\$38,380	\$35,138	-8.4%	\$34,103	\$33,184	-2.7%
Manhattan	\$48,082	\$50,229	4.5%	\$35,148	\$37,605	7.0%	\$27,219	\$27,744	1.9%
Queens	\$52,775	\$48,608	-7.9%	\$48,841	\$46,252	-5.3%	\$50,279	\$49,849	-0.9%
Staten Island	\$66,141	\$64,333	-2.7%	\$87,858	\$67,750	-22.9%	\$43,672	\$36,447	-16.5%

Area Name	All Families			Hispanic Families			White Families		
	1990	2000	Percent Change	1990	2000	Percent Change	1990	2000	Percent Change
NYC	\$44,856	\$41,887	-6.6%	\$27,748	\$28,949	4.3%	\$61,377	\$63,085	2.8%
Bronx	\$33,262	\$30,682	-7.8%	\$22,456	\$23,496	4.6%	\$53,715	\$54,493	1.4%
Brooklyn	\$39,208	\$36,188	-7.7%	\$25,260	\$26,661	5.5%	\$51,285	\$48,288	-5.8%
Manhattan	\$48,082	\$50,229	4.5%	\$23,992	\$25,939	8.1%	\$98,488	\$119,525	21.4%
Queens	\$52,775	\$48,608	-7.9%	\$40,244	\$38,599	-4.1%	\$59,115	\$57,760	-2.3%
Staten Island	\$66,141	\$64,333	-2.7%	\$54,953	\$47,478	-13.6%	\$78,061	\$70,205	-10.1%

\$ Constant Dollars

Source: U.S. Census Bureau, SF3: 1990 & 2000

A recent Community Service Society study revealed wide disparities between married and single mothers by race and Hispanic origin in 2000². The median hourly wage for a Black single mother was \$11.68 and increased to \$12.95 if she was married. Latina mothers had the lowest hourly wage for both married and single mothers: single Latina mothers earned \$10.17 an hour and married women earned 2 cents more. White mothers earned \$12.17 per hour if they were single and their wages jumped to \$16.22 if they were married.

Table 30

Median Family Household Income of Families of Color as a Percent of White Family Income in New York City: 1990 & 2000

Area Name	Asian Families		Black Families		Hispanic Families	
	1990	2000	1990	2000	1990	2000
NYC	71.1	66.9	58.2	56.1	45.2	45.9
Bronx	68.8	76.0	61.2	58.6	41.8	43.7
Brooklyn	74.8	68.5	66.5	64.7	49.3	52.0
Manhattan	35.7	38.2	27.6	28.2	24.4	26.3
Queens	82.6	78.2	85.1	84.3	68.1	65.3
Staten Island	112.5	86.8	55.9	46.7	70.4	60.8

Share of Women in Poverty by Race and Hispanic Origin

Low wages, less than steady full-time work and an inadequate system of income support have combined to produce high rates of poverty in families headed by employed single mothers. At the peak of the 1990's economic expansion, 25 percent of New York City families headed by a working single mother lived below the federally defined poverty level.

In 2000, 21 percent of the city's residents who had a determined poverty status were below the poverty level – a slight increase from 19 percent a decade ago. Nearly six out of every ten (57 percent) of the people in poverty were women, and nearly three-fourths (73 percent) of all the women in poverty were Hispanic (40 percent) and Black (33 percent). Only 19 percent were white, 8 percent were Asian and less than one percent Native American.

² Levitan, Mark. *Mother's Work: Single Mothers' Employment, Earnings, and Poverty in the Age of Welfare Reform*. Community Service Society, 2002.

Distribution of Poverty among Women by Race and Hispanic Origin

Among Latinas, 34 percent were in poverty in 2000, as were 32 percent of Native American women, 27 percent of Black women and 20 percent of Asian women. Only 12 percent of white women lived in poverty.

Poverty among women of color tends to be concentrated in a few areas. Thirty (30) percent of Asian women in poverty reside in three of the city's 59 Community Districts: Manhattan's Chinatown, Queens' Flushing and Brooklyn's Bensonhurst. Among Latinas, 37 percent of those in poverty are concentrated in the South Bronx, Washington Heights in Manhattan and Bushwick in Brooklyn. Black women living in poverty are also narrowly confined: 39 percent of all Black women in poverty reside in Harlem; Bedford Stuyvesant, Brownsville, Crown Heights, and East New York in Brooklyn; and in the Jamaica section of Queens. Native American women in poverty are mainly concentrated (36 percent) in upper Manhattan and the South Bronx. The highest concentration of white women in poverty is found in Brooklyn: Greenpoint-Williamsburg, Bensonhurst, Borough Park, and Gravesend-Sheepshead Bay. A noticeable aspect of the highest poverty concentrations of women in the different racial and ethnic groups is that they tend to isolate from each other (Figures 16-21).

Figure 16
 Percent Distribution of Asian Women Living Below the Poverty Line by New York City Community Districts: 2000

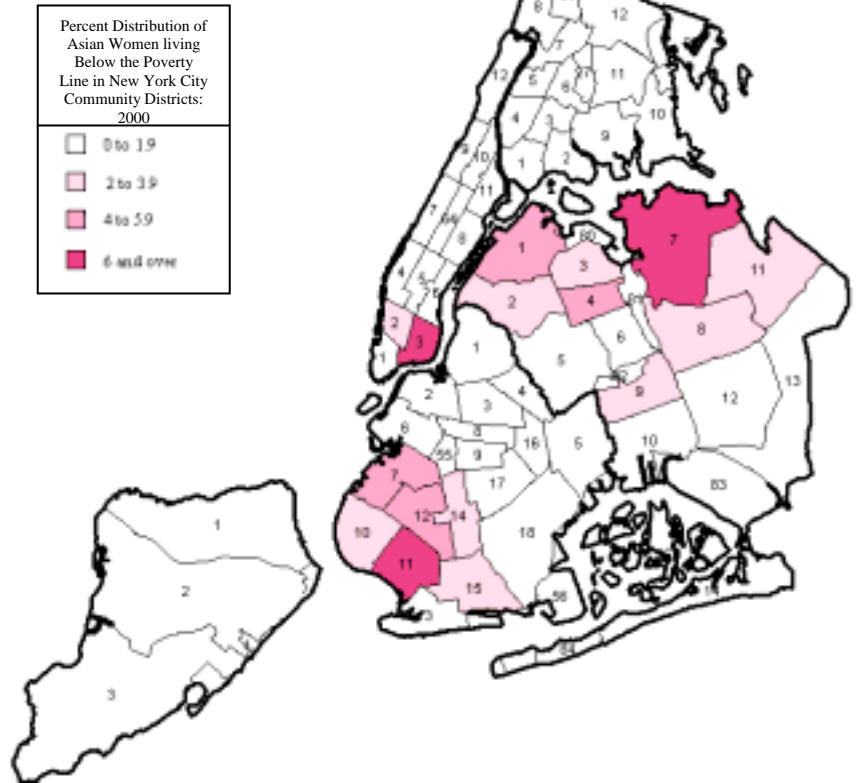


Figure 17
 Percent Distribution of Black Women Living Below the Poverty Line by New York City Community Districts: 2000

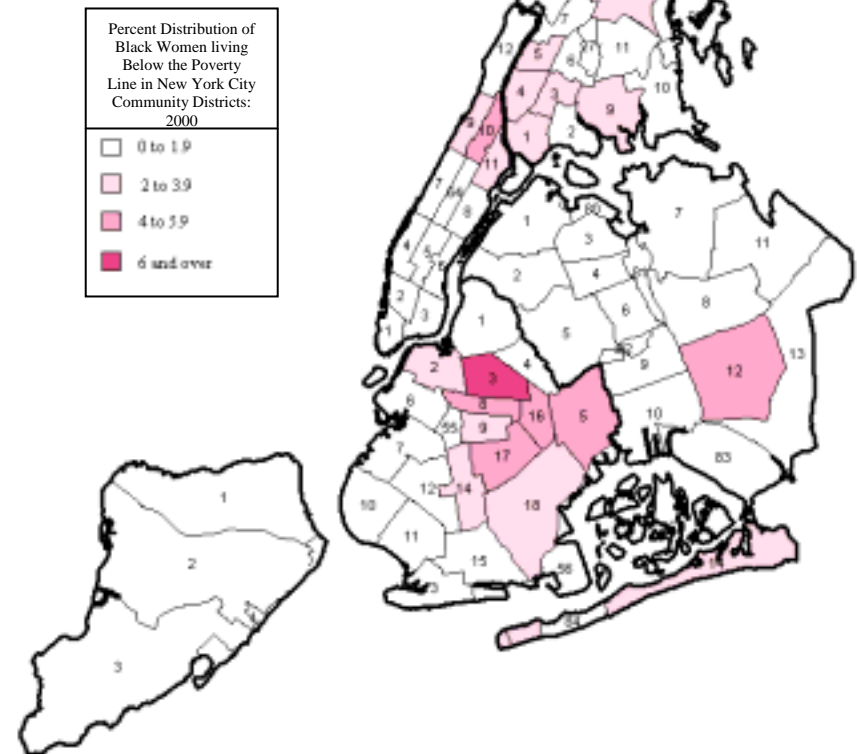


Figure 18
 Percent Distribution of Hispanic Women Living Below the Poverty Line by New York City Community Districts: 2000

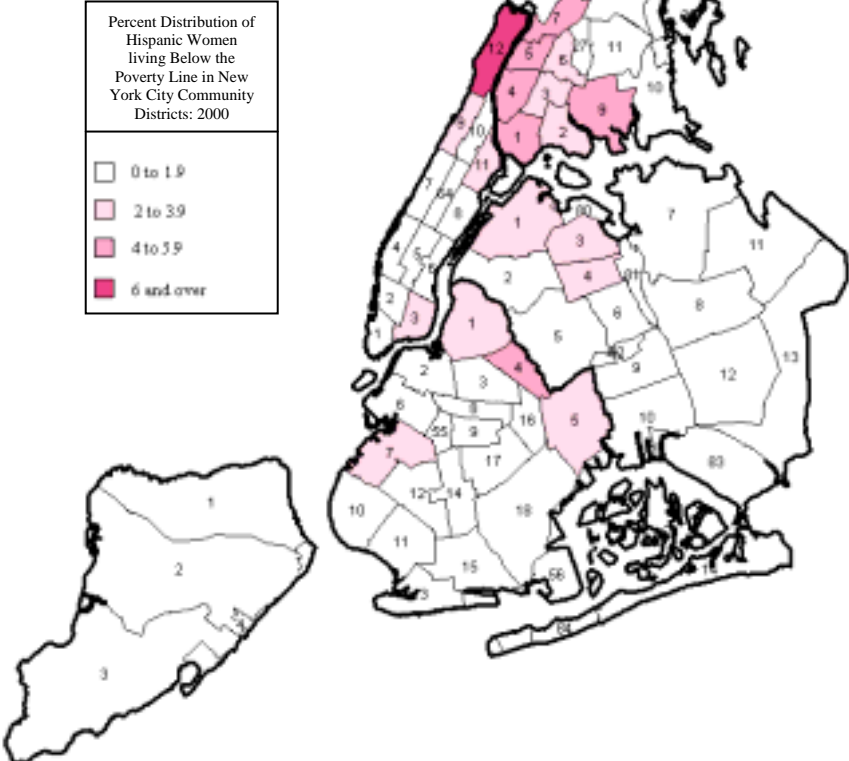


Figure 19
 Percent Distribution of Native American Women Living Below the Poverty Line by New York City Community Districts: 2000

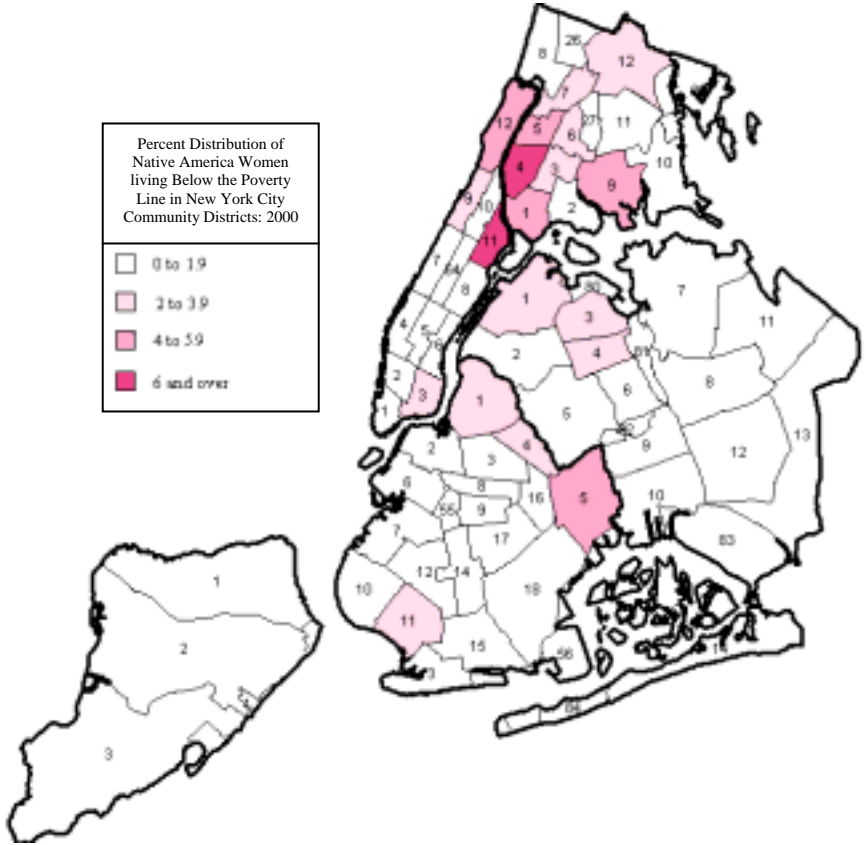


Figure 20
 Percent Distribution of White Women Living Below the Poverty Line by New York City Community Districts: 2000

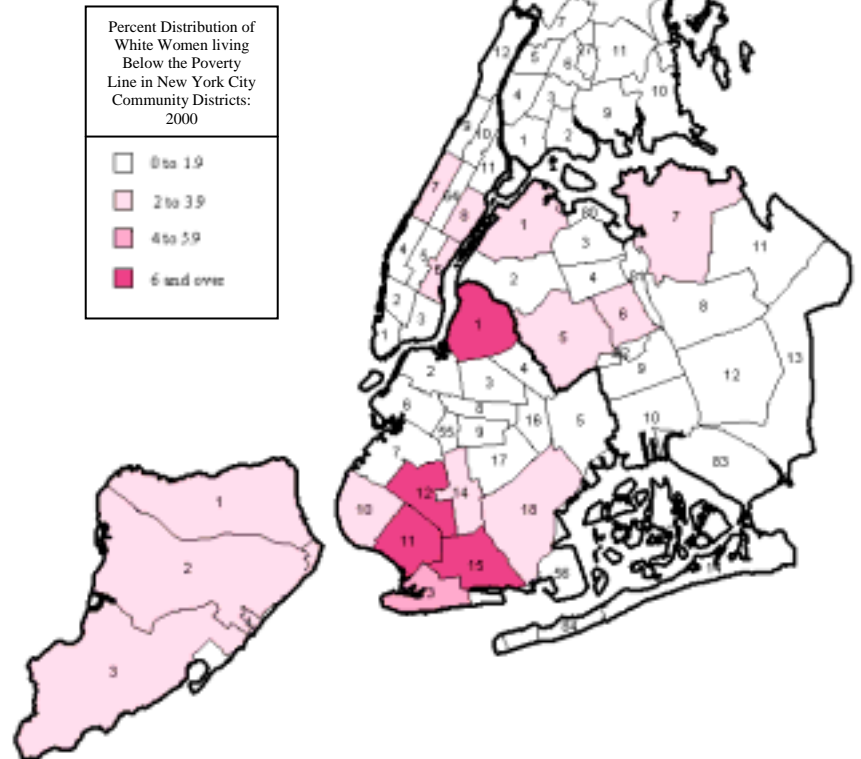
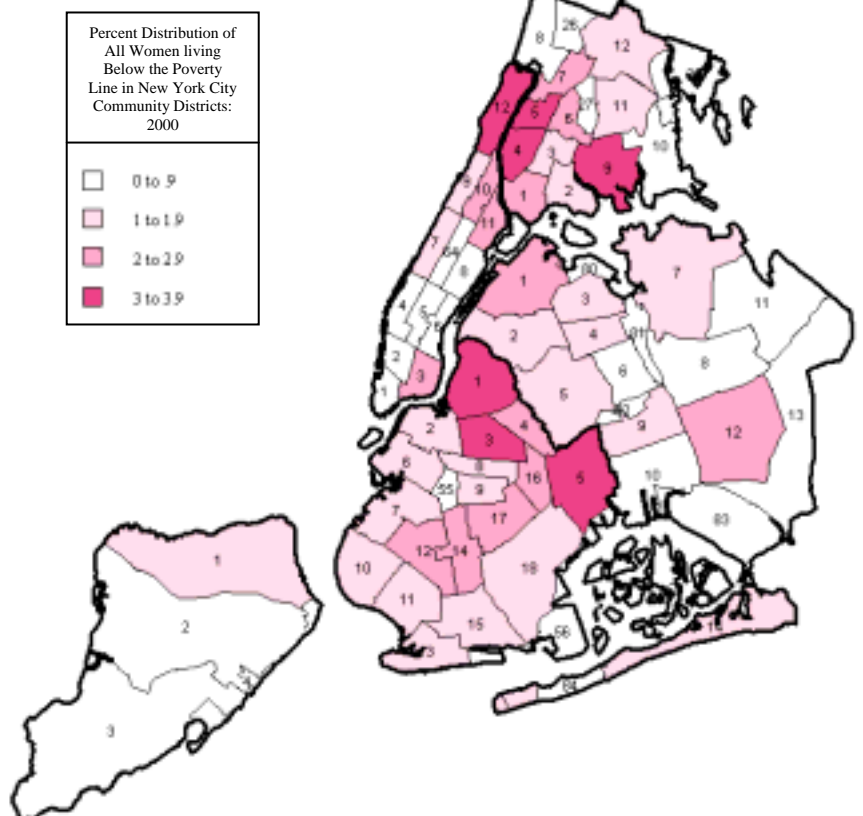
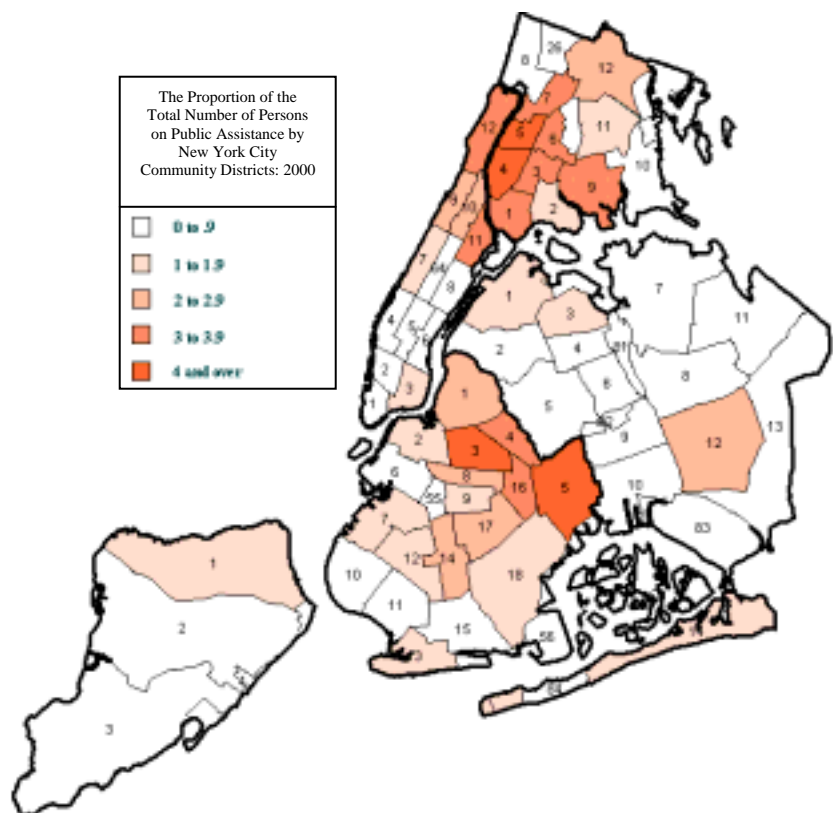


Figure 21
 Percent Distribution of All Women Living Below the Poverty Line by New York City Community Districts: 2000



Welfare

Due to changes mandated by the Temporary Assistance for Needy Families (TANF) Program established by the welfare reform act, the number of recipients in the city declined by nearly half from 824,358 to 494,310 between 1996 and 2002. Data obtained from the Center for Urban Research reveals that over 90 percent of the recipients were Black women and Latinas.¹ The majority of the recipients are concentrated in 15 of the city's 59 Community Districts, mainly in Brooklyn (34 percent) and the Bronx (30 percent). These districts are only 25 percent of the city's residents but 54 percent of the TANF recipients. Women of color constitute more than 85 percent of the women in the districts. A companion report, *Race, Gender and Welfare Reform: The Need for Targeted Support* (Women of Color Policy Network Welfare Report, 2002) shows that the TANF concentrated areas - are plagued by a variety of social and economic problems. Over 60 percent of the SURR schools are in these districts, 45 percent of the city's children in poverty under 5 reside in these areas, half of the children entering foster care come from homes in these areas, and nearly 40 percent of the infant deaths are to mothers who live in these areas. In addition to the problems facing children, 42 percent of all the arrests occur in these areas, 45 percent of the homicide deaths and half of the HIV-related deaths occur there.



³ Joseph Pereira, Center for Urban Research, CUNY

APPENDIX

A 1. Women by Race/Hispanic Origin as a Percent of All Women Within New York City Community Districts: 2000

Community District	Asian Women	Black Women	Hispanic Women	Native American Women	Total Women of Color	White Women	All Women
Manhattan	9.5	15.8	26.9	0.4	52.6	45.5	100.0
101	19.3	4.9	6.6	0.3	31.1	64.8	100.0
102	15.3	2.2	5.4	0.2	23.1	74.5	100.0
103	33.6	7.5	28.9	0.5	70.5	27.5	100.0
104	9.2	7.4	21.9	0.4	38.9	58.2	100.0
105	14.1	4.3	6.8	0.2	25.4	72.4	100.0
106	11.4	3.8	6.8	0.2	22.2	75.8	100.0
107	6.1	9.4	16.5	0.2	32.2	65.5	100.0
108	6.6	3.2	6.0	0.1	15.9	82.3	100.0
109	5.3	32.4	42.1	0.7	80.5	17.5	100.0
110	0.8	78.2	16.5	0.4	95.9	1.8	100.0
111	2.7	37.8	50.6	0.8	91.9	6.8	100.0
112	2.0	8.7	74.5	0.9	86.1	12.9	100.0
Brooklyn	6.9	36.4	19.2	0.3	62.8	34.0	100.0
301	3.6	6.0	38.2	0.4	48.2	47.2	100.0
302	4.8	42.9	17.1	0.3	65.1	31.5	100.0
303	0.8	78.1	17.2	0.3	96.4	1.2	100.0
304	2.9	25.0	66.2	0.8	94.9	3.0	100.0
305	3.0	50.8	36.6	0.6	91.0	5.0	100.0
306	4.7	14.3	23.2	0.7	42.9	54.2	100.0
307	17.2	3.6	51.4	0.6	72.8	24.6	100.0
308	1.4	78.8	9.7	0.2	90.1	7.0	100.0
309	0.7	78.8	8.3	0.3	88.1	8.9	100.0
310	13.4	1.0	11.2	0.1	25.7	70.0	100.0
311	21.9	0.4	8.1	0.4	30.8	66.8	100.0
312	13.3	3.1	13.5	0.3	30.2	65.7	100.0
313	8.1	16.6	15.5	0.1	40.3	56.8	100.0
314	6.5	41.9	12.6	0.2	61.2	34.9	100.0
315	12.1	3.4	6.4	0.2	22.1	75.8	100.0
316	0.5	79.0	17.2	0.3	97.0	0.6	100.0
317	1.0	88.5	5.6	0.3	95.4	1.6	100.0
318	3.4	52.2	8.2	0.2	64.0	33.5	100.0

Community District	Asian Women	Black Women	Hispanic Women	Native American Women	Total Women of Color	White Women	All Women
Bronx	2.7	31.9	48.2	0.8	83.6	14.4	100.0
201	0.5	27.5	69.4	1.5	98.9	1.2	100.0
202	0.3	22.4	74.8	0.9	98.4	1.2	100.0
203	0.3	44.6	52.5	1.1	98.5	0.9	100.0
204	1.3	36.8	58.1	1.4	97.6	1.4	100.0
205	1.5	32.9	61.5	0.9	96.8	1.4	100.0
206	1.1	27.5	60.8	1.1	90.5	8.3	100.0
207	5.9	20.2	59.2	0.8	86.1	11.1	100.0
208	4.7	12.7	36.2	0.4	54.0	43.9	100.0
209	3.3	34.5	54.5	0.6	92.9	4.2	100.0
210	2.7	21.3	26.5	0.5	51.0	47.1	100.0
211	5.8	19.2	33.9	0.5	59.4	37.6	100.0
212	1.7	66.4	18.2	0.4	86.7	9.8	100.0
Queens	16.8	20.3	24.2	0.4	61.7	33.2	100.0
401	12.7	9.0	27.0	0.6	49.3	44.0	100.0
402	26.8	1.4	35.8	0.7	64.7	32.0	100.0
403	13.6	11.5	55.5	0.5	81.1	16.1	100.0
404	29.2	7.9	48.8	0.6	86.5	11.1	100.0
405	6.2	1.0	28.1	0.1	35.4	62.6	100.0
406	20.6	2.3	11.7	0.2	34.8	62.1	100.0
407	35.1	3.1	16.9	0.2	55.3	42.0	100.0
408	22.7	15.1	16.6	0.2	54.6	39.4	100.0
409	15.3	7.1	36.0	0.8	59.2	29.0	100.0
410	12.2	17.3	20.7	0.7	50.9	34.2	100.0
411	25.9	2.1	9.3	0.2	37.5	60.5	100.0
412	4.5	74.1	12.6	0.6	91.8	2.3	100.0
413	9.4	56.3	10.4	0.4	76.5	18.4	100.0
414	1.6	41.8	16.8	0.3	60.5	36.4	100.0
Staten Island	5.5	9.3	11.8	0.2	26.8	71.4	100.0
501	4.9	22.8	19.2	0.2	47.1	49.8	100.0
502	8.7	2.5	9.3	0.2	20.7	77.6	100.0
503	3.3	0.5	5.8	0.2	9.8	89.5	100.0

Note that total may not add to 100 due to rounding and exclusion of persons of mixed descent.
Source : New York City Department of Planning, Community District Profiles: 2000

A 2. Community District Names

Community District	Area name
Bronx	
101	Mott Haven/Melrose
102	Hunts Point/Longwood
103	Morrisania/Crotona
104	Highbridge/Concourse
105	Fordham/University Heights
106	Belmont/East Tremont
107	Kingsbridge Hghts/Bedford Park
108	Riverdale/Fieldston
109	Parkchester/Soundview
110	Throgs Neck/Co-op City
111	Morris Park/Bronxdale
112	Williamsbridge/Baychester

Brooklyn	
201	Greenpoint/Williamsburg
202	Fort Greene/Brooklyn Heights
203	Bedford Stuyvesant
204	Bushwick
205	East New York/Starrett City
206	Park Slope/Carroll Gardens
207	Sunset Park
208	Crown Heights
209	South Crown Heights/Prospect
210	Bay Ridge/Dyker Heights
211	Bensonhurst
212	Borough Park
213	Coney Island
214	Flatbush/Midwood
215	Sheepshead Bay
216	Brownsville
217	East Flatbush
218	Flatlands/Canarsie

Community District	Area name
Manhattan	
301	Financial District
302	Greenwich Village/Soho
303	Lower East Side/Chinatown
304	Clinton/Chelsea
305	Midtown
306	Stuyvesant Town/Turtle Bay
307	Upper West Side
308	Upper East Side
309	Morningside Heights/Hamilton
310	Central Harlem
311	East Harlem
313	Washington Heights/Inwood

Queens	
401	Astoria
402	Woodside/Sunnyside
403	Jackson Heights
404	Elmhurst/Corona
405	Ridgewood/Maspeth
406	Rego Park/Forest Hills
407	Flushing/Whitestone
408	Hillcrest/Fresh Meadows
409	Ozone Park/Woodhaven
410	S. Ozone Park/Howard Beach
411	Bayside/Little Neck
412	Jamaica/Hollis
413	Queens Village
414	Rockaway/Broad Channel
Staten Island	
501	St. George/Stapleton
502	S. Beach/Willowbrook
503	Tottenville/Great Kills

Source: New York Department of City Planning