

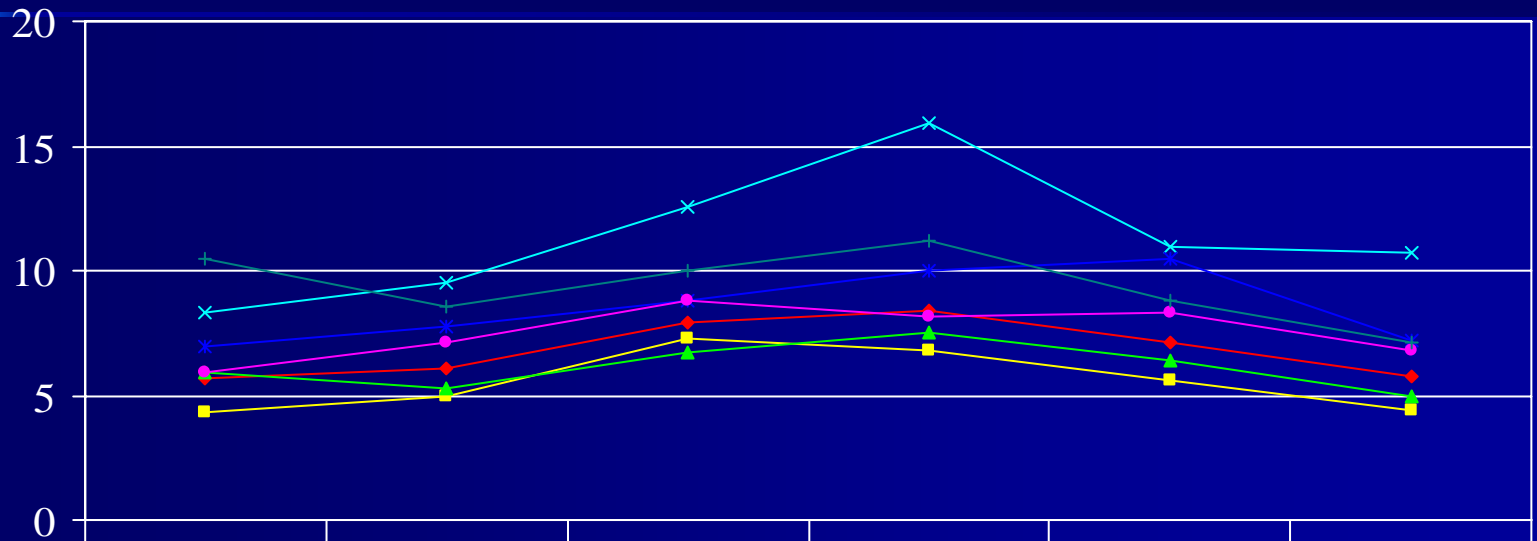
# **The Status of Women of Color in New York City**

**Presentation to the Women's Issues Committee  
New York City Council  
February 27, 2006  
Women of Color Policy Network**

# The Invisibility of Women of Color

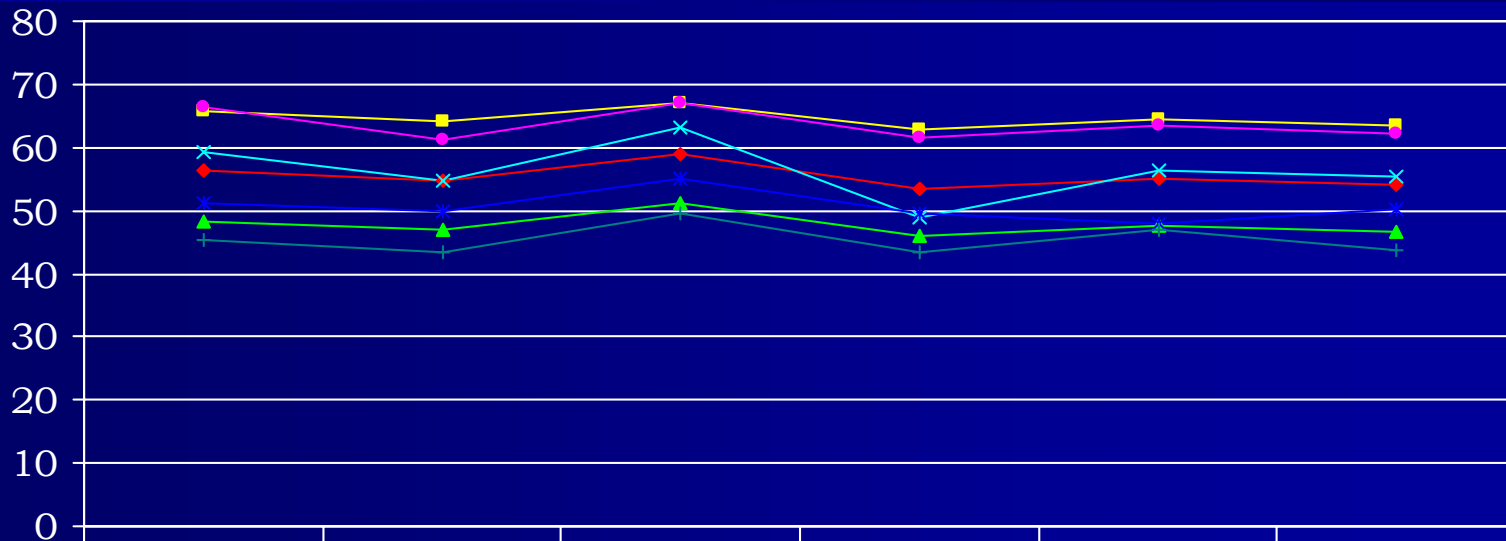
- The failure of analysts and policy makers to identify the trends, needs and problems of women of color.
- The tendency of analysts and policy makers to view the issues and problems of women of color through the prism of white women.
- The tendency to misdiagnose the problems of women of color.

# Unemployment Rates by Race/Ethnicity and Gender in New York City: 1995-2003



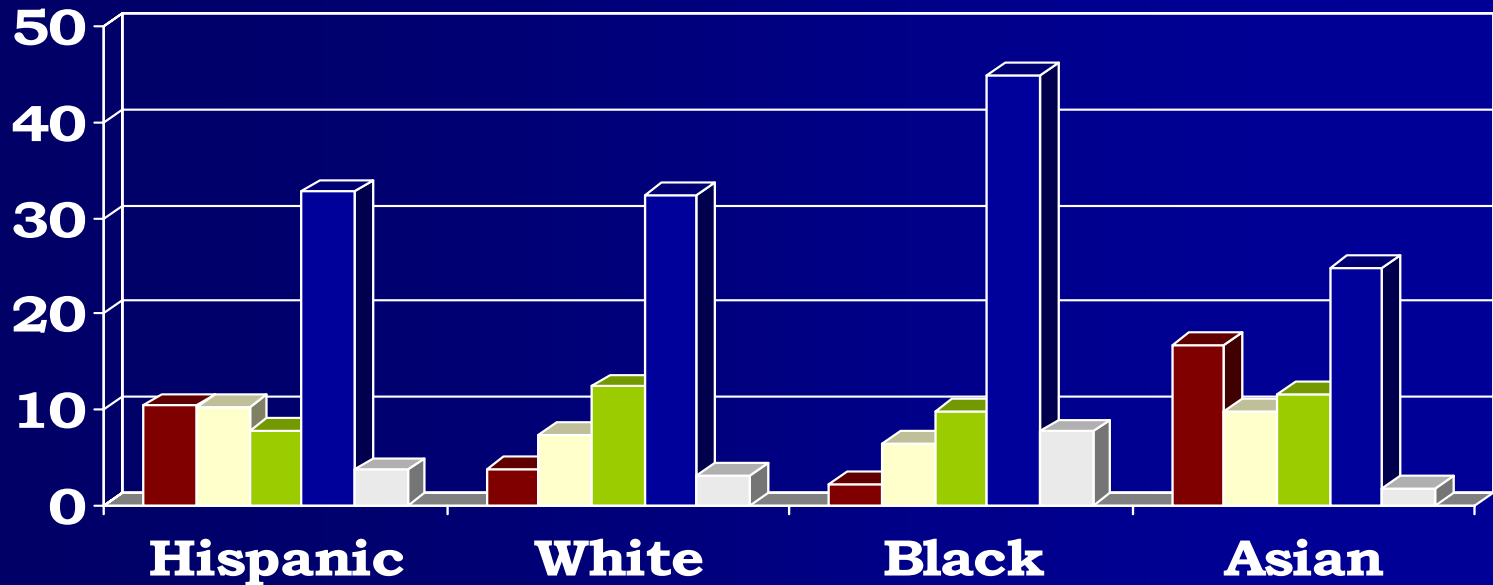
	2000	2001	2002	2003	2004	2005
NYC Average	5.7	6.1	7.9	8.4	7.1	5.8
White Male	4.3	5	7.3	6.8	5.6	4.4
White Female	5.9	5.3	6.7	7.5	6.4	5
Black Male	8.3	9.5	12.6	15.9	11	10.7
Black Female	7	7.8	8.8	10	10.5	7.2
Hispanic Male	5.9	7.1	8.8	8.2	8.3	6.8
Hispanic Female	10.5	8.6	10	11.2	8.8	7.1

# E/P by Race/Hispanic Origin in New York City: 2001 to 2003



	2000	2001	2002	2003	2004	2005
—◆— NYC Average	56.3	54.6	59.1	53.5	55.1	54.1
—■— White Male	65.7	64.1	66.9	62.8	64.6	63.4
—▲— White Female	48.2	47	51.3	45.9	47.6	46.6
—×— Black Male	59.4	54.8	63.3	49	56.4	55.5
—*— Black Female	51.3	50	55.1	49.6	47.9	50.3
—●— Hispanic Male	66.3	61.2	67	61.7	63.5	62.2
—+— Hispanic Female	45.4	43.5	49.6	43.3	47.1	43.7

# Industry Segmentation



■ Manufacturing

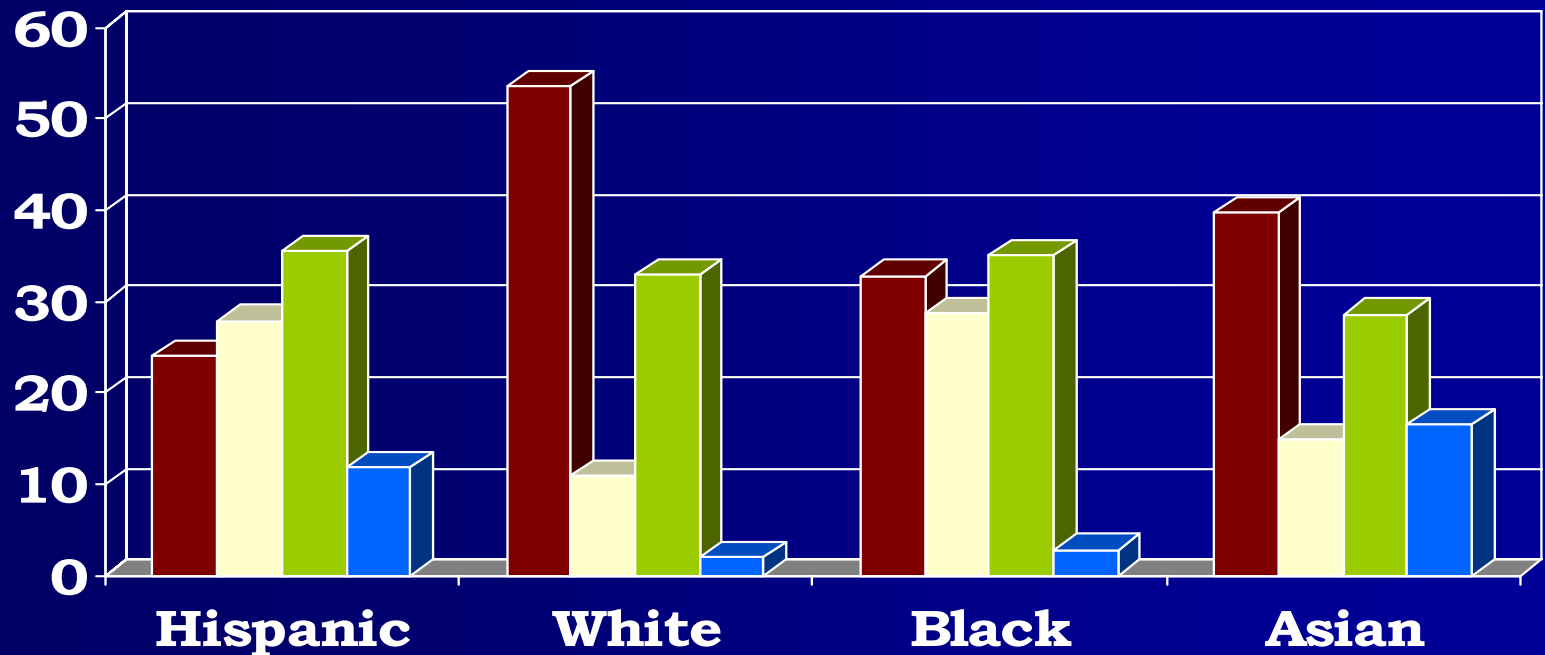
■ Retail Trade

■ Finance, insurance

□ Educational, health

■ Public Administration

# Occupation Segmentation



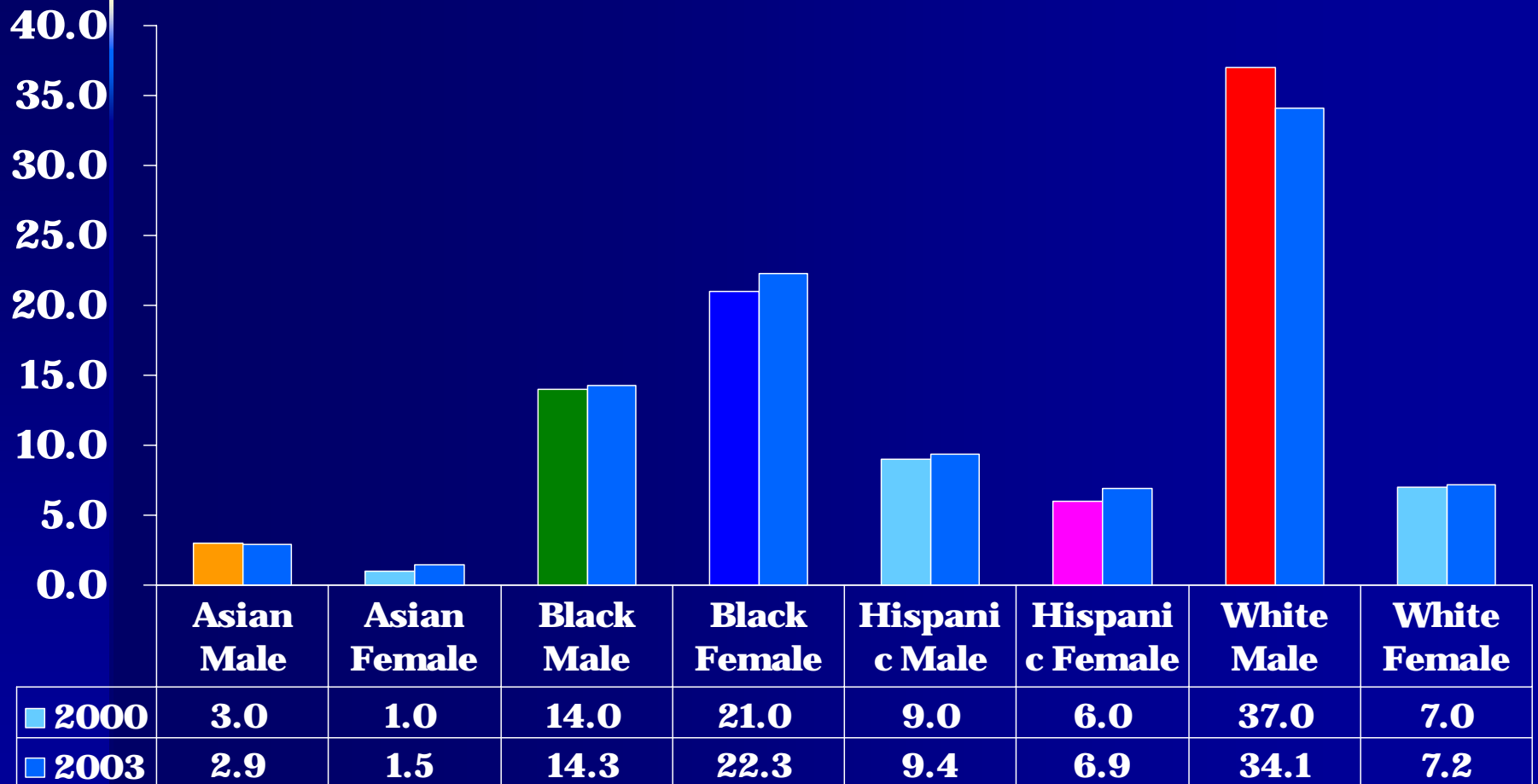
■ Management

■ Service

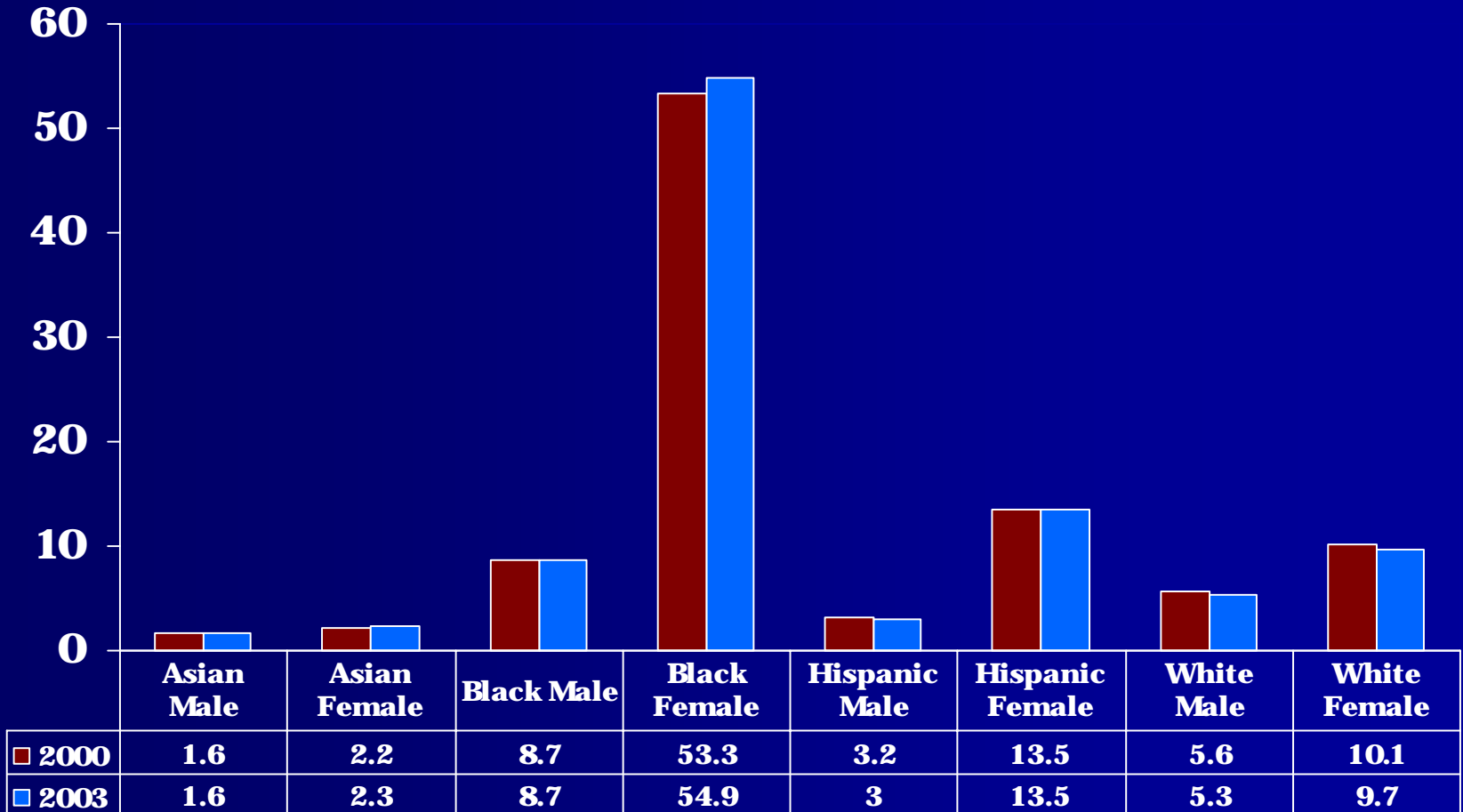
■ Sales

■ Production

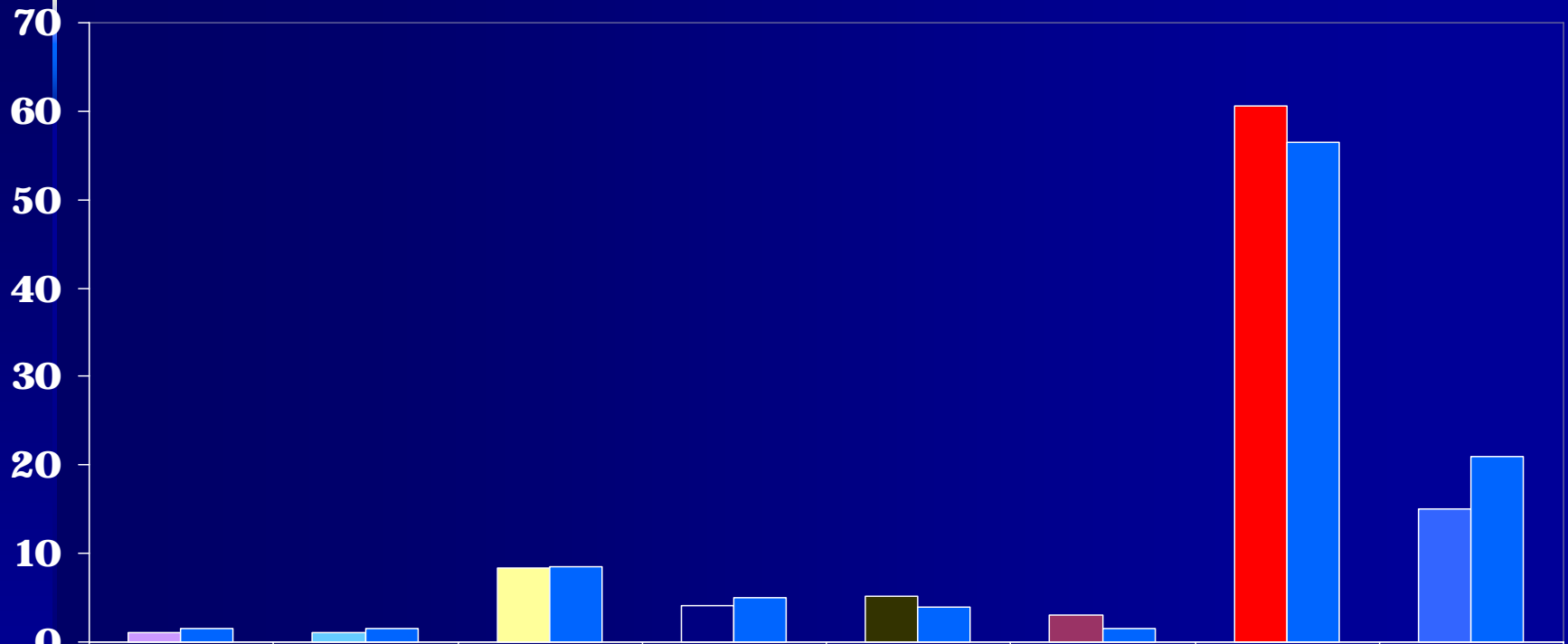
# Mayoral Workforce Composition: 2000 and 2003



# Clerical Workers in the Mayoral Workforce by Race and Gender: 2000 and 2003

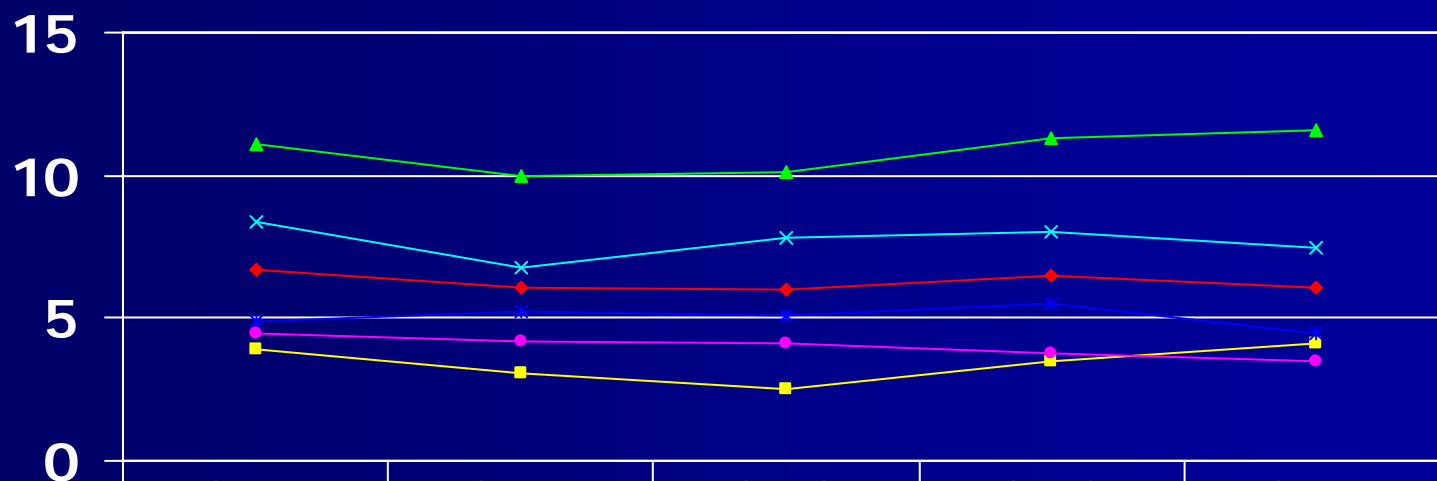


# Percent Administrators in the Mayoral Workforce by Race/Ethnicity and Gender: 2000 And 2003



	<b>Asian Male</b>	<b>Asian Female</b>	<b>Black Male</b>	<b>Black Female</b>	<b>Hispanic Male</b>	<b>Hispanic Female</b>	<b>White Male</b>	<b>White Female</b>
<b>2000</b>	<b>1</b>	<b>1</b>	<b>8.3</b>	<b>4.1</b>	<b>5.2</b>	<b>3.1</b>	<b>60.6</b>	<b>15</b>
<b>2003</b>	<b>1.5</b>	<b>1.5</b>	<b>8.5</b>	<b>5</b>	<b>4</b>	<b>1.5</b>	<b>56.5</b>	<b>21</b>

# Infant Mortality Rates by Race/Ethnicity for New York City: 1995 to 2002



	2000	2001	2002	2003	2004
◆ NYC	6.7	6.1	6	6.5	6.1
■ Asian	3.9	3.1	2.5	3.5	4.1
▲ Black	11.1	10	10.1	11.3	11.6
× Puerto Rican	8.4	6.8	7.8	8	7.5
* Other Hispanic	4.9	5.2	5.1	5.5	4.5
● White	4.5	4.2	4.1	3.8	3.5