

WOMEN OF COLOR in New York City: STILL INVISIBLE IN POLICY

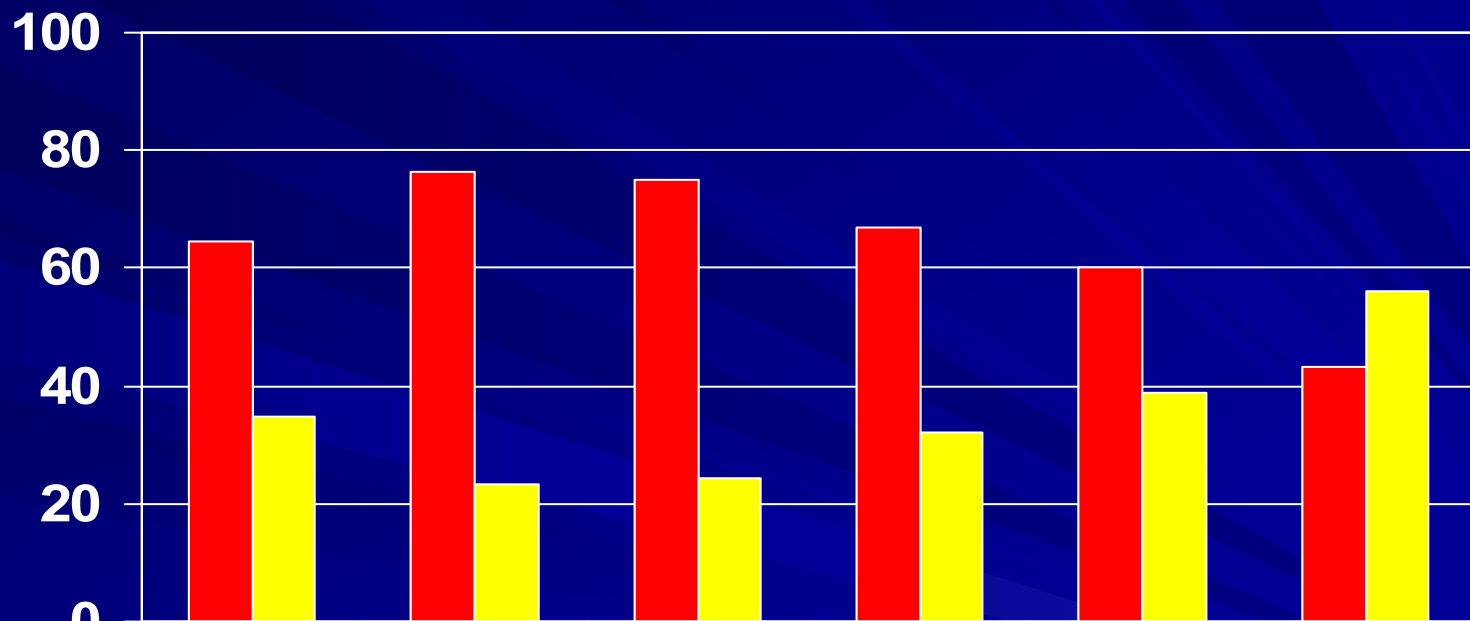
Second Annual Report on the Status of Women of Color in New York City

Presentation to the Women's Issues Committee
New York City Council
January 27, 2003
Women of Color Policy Network

The Invisibility of Women of Color is Largely Attributed to Three Factors:

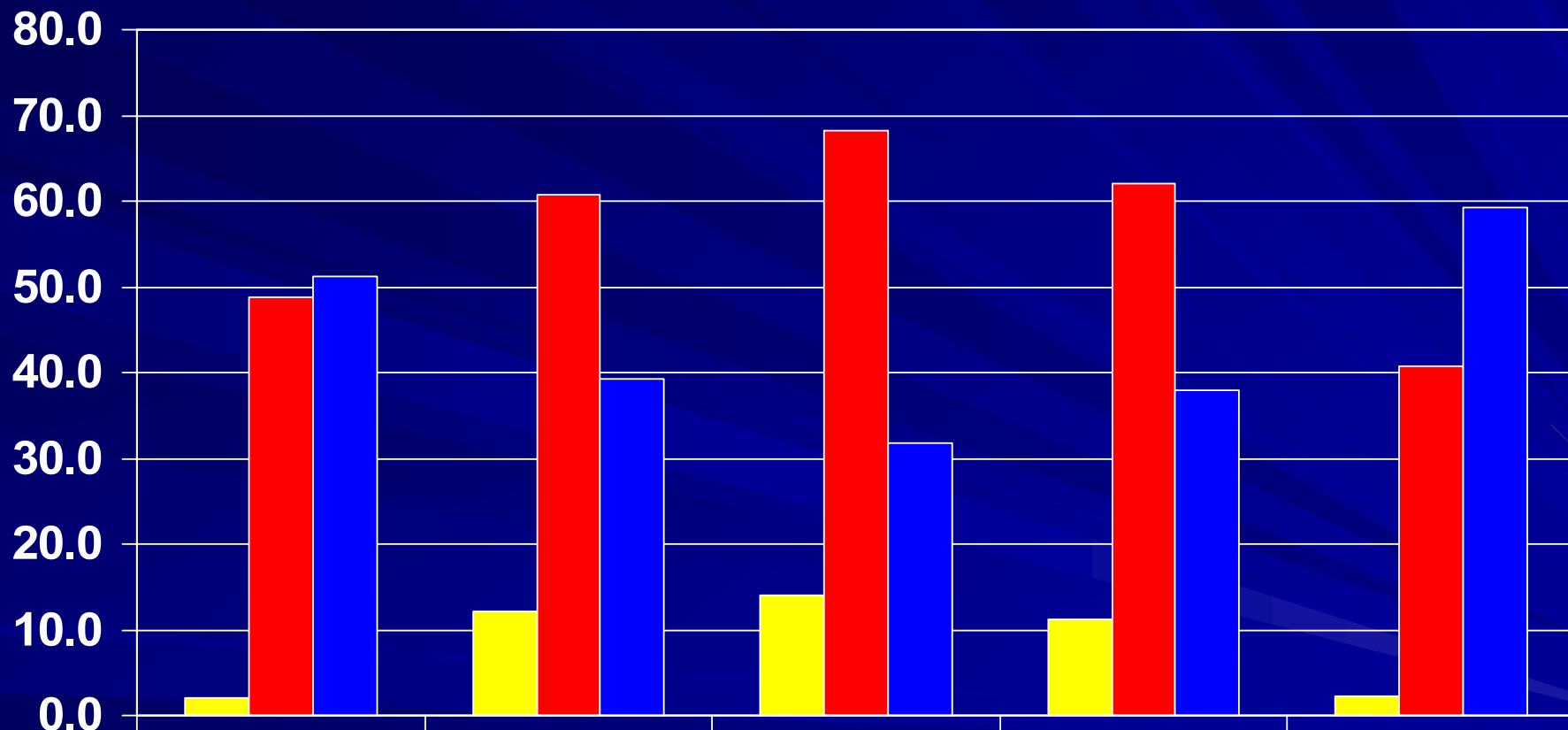
- The failure of analysts and policy makers to identify the trends, needs and problems of women of color.
- The tendency of analysts and policy makers to view the issues and problems of women of color through the prism of white women.
- The tendency to misdiagnose the problems of women of color.

The Share of the Female Population by Race/Hispanic Origin within Age Cohorts in New York City: 2000



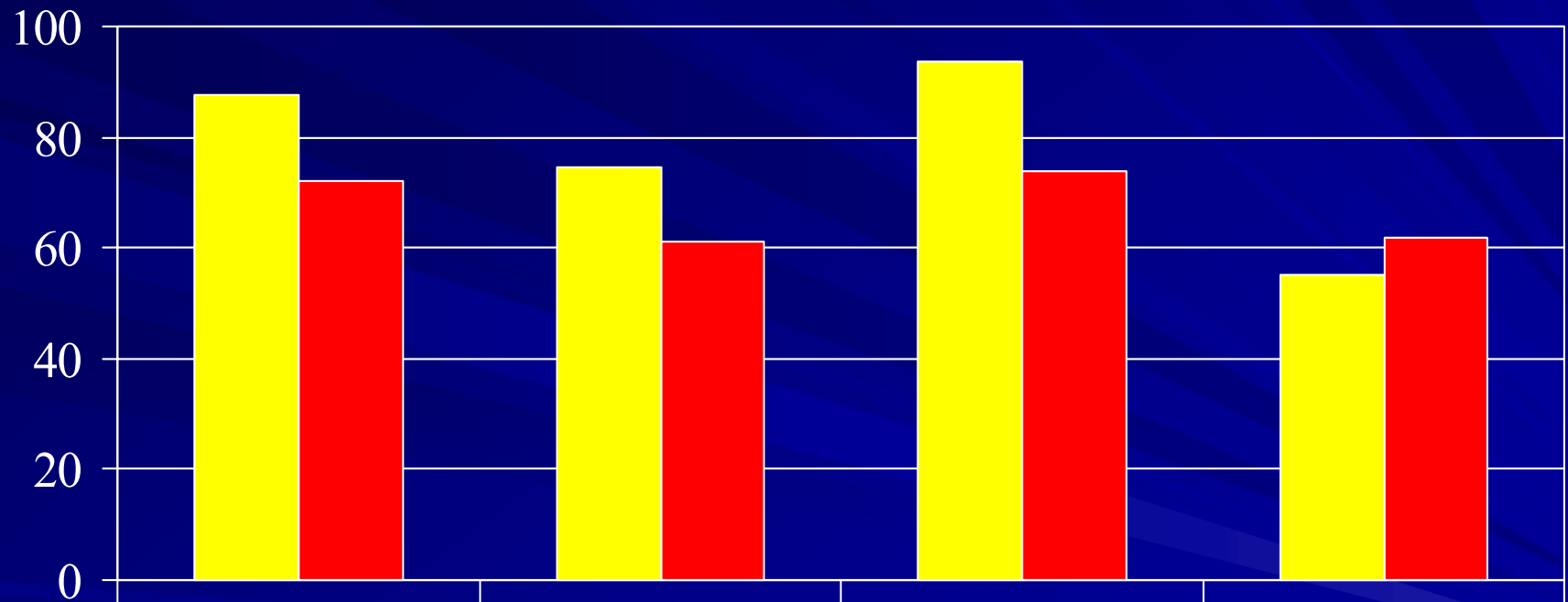
	Total	Under 15	15 to 19	20 to 44	45 to 64	65 and over
Women of Color	64.4	76.2	75.0	66.8	60.1	43.4
White Women	34.7	23.2	24.2	32.0	39.0	56.0

Distribution of Live Births by Mother's Age and Race/Hispanic Origin in New York City : 2000



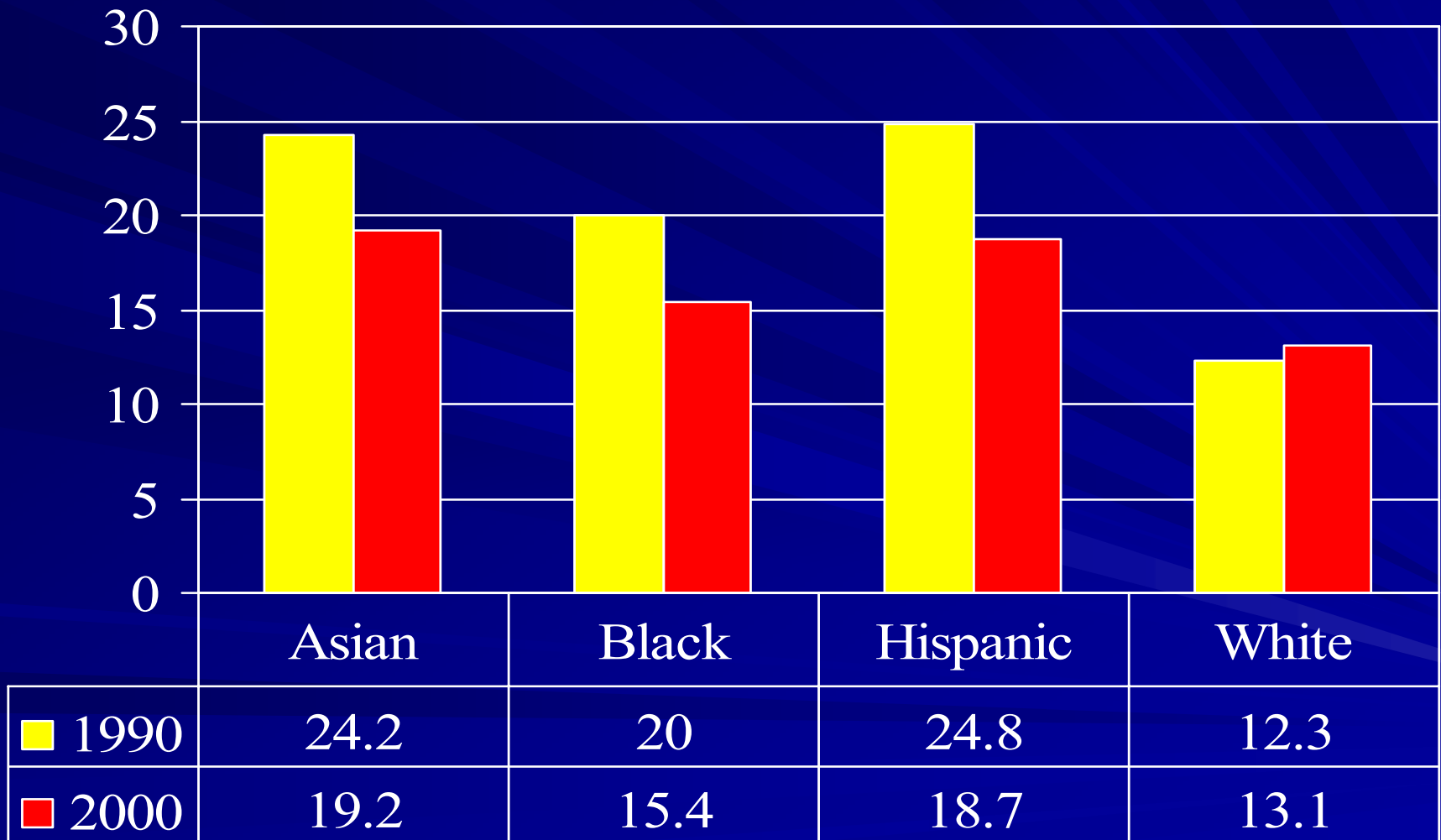
	Asian	Black	Hispanic	Women of Color	White
Under 19	2.0	12.1	14	11.3	2.2
Under 30	48.7	60.7	68.2	62.1	40.7
Over 30	51.3	39.3	31.8	37.9	59.3

Fertility Rates for Women by Race/Hispanic Origin in New York City: 1990 & 2000



	Asian	Black	Hispanic	White
■ 1990	87.6	74.7	93.5	55.1
■ 2000	72.2	61.3	73.8	61.9

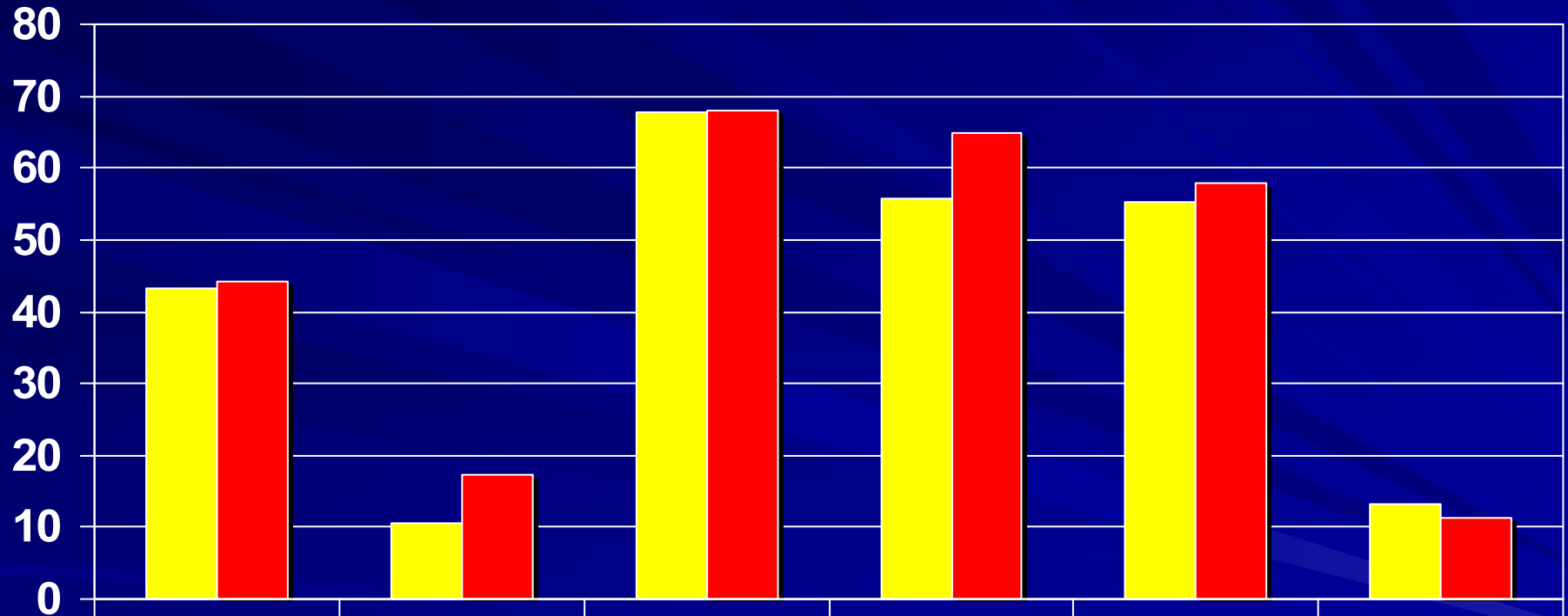
Birth Rates for Women by Race/Hispanic Origin in New York City: 1990 & 2000



Teenage Birth Rates for Women by Race/Hispanic Origin in New York City: 2000

- In 2000, the teenage birth rate for Latinas was 65.9 per 1,000 live births
- Among Black teenagers the rate was 47.5.
- Among Asian teenagers the rate 12.7
- White teenagers had a birth rate 13.0

Percent of Live Births to Unmarried Women from All Live Births by Mother's Race/Hispanic Origin in New York City: 1990 & 2000



■ 1990	43.3	10.6	67.8	55.8	55.2	13.3
■ 2000	44.2	17.3	68.0	64.9	57.9	11.2

Poverty Among Women of Color

- In 2000, 73 percent of all women in poverty were women of color.
- Among Black females, 37 percent were living below the poverty level
- 33 percent of Latinas were in poverty
- 32 percent of Native Americans women were in poverty
- 20 percent of Asian women were in poverty
- Among White women, 12 percent were in poverty

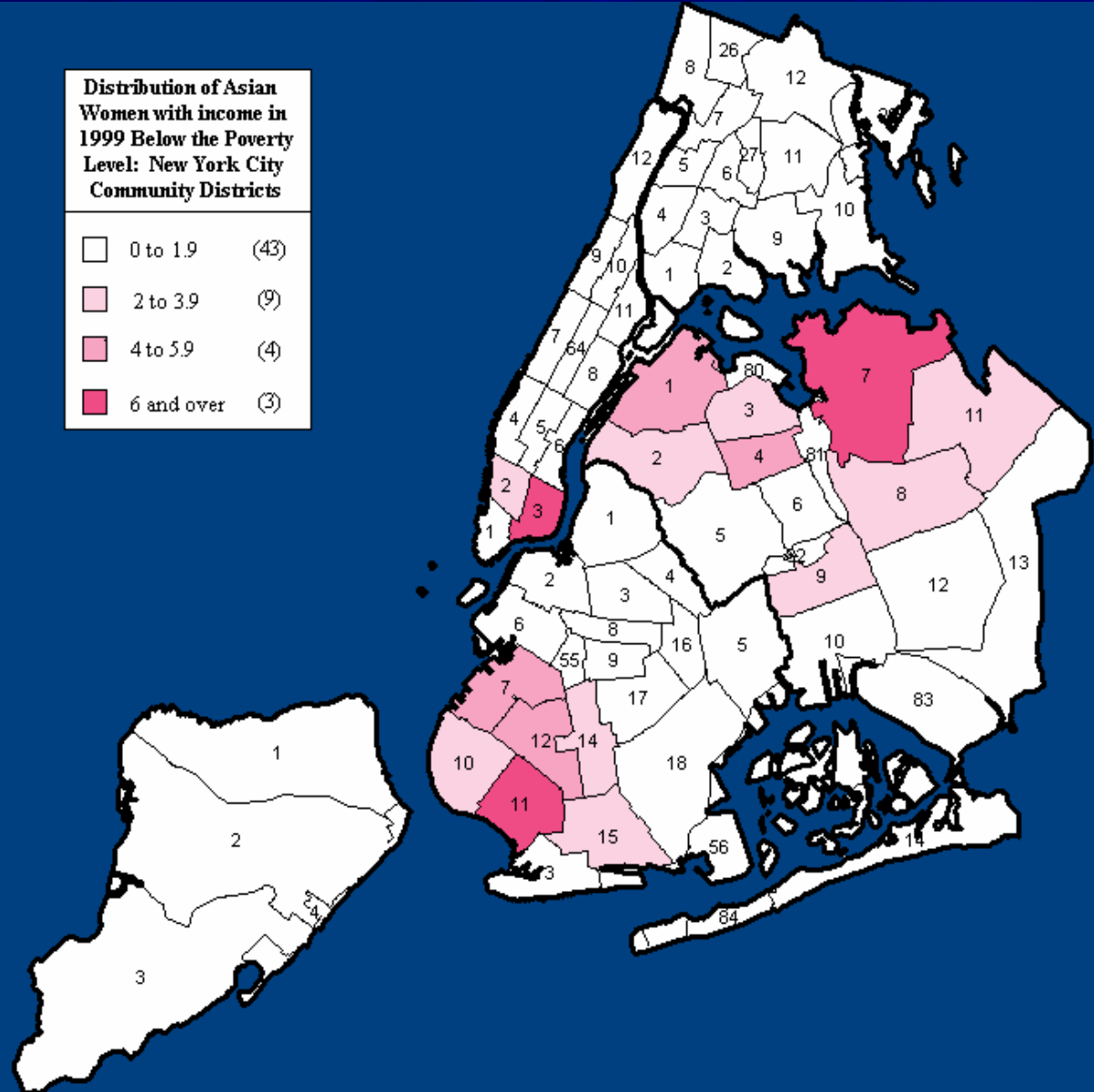
Asian Women in Poverty

■ In 2000, 30% of all Asian women in poverty resided in three of the City's Community Districts

■ Manhattan's Chinatown, Bensonhurst in Brooklyn and Flushing, Queens.

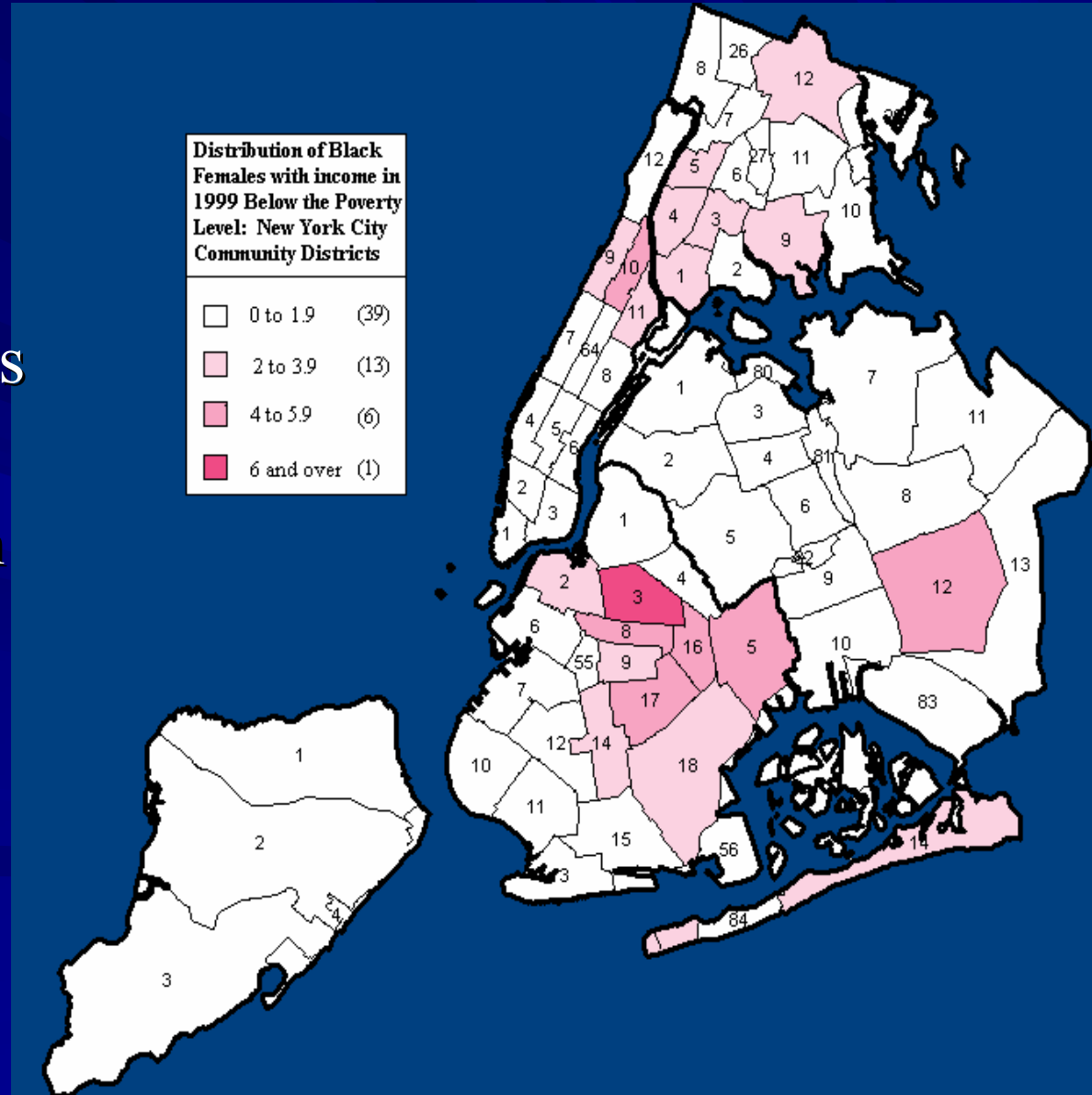
Distribution of Asian Women with income in 1999 Below the Poverty Level: New York City Community Districts

□	0 to 1.9	(43)
□	2 to 3.9	(9)
□	4 to 5.9	(4)
■	6 and over	(3)



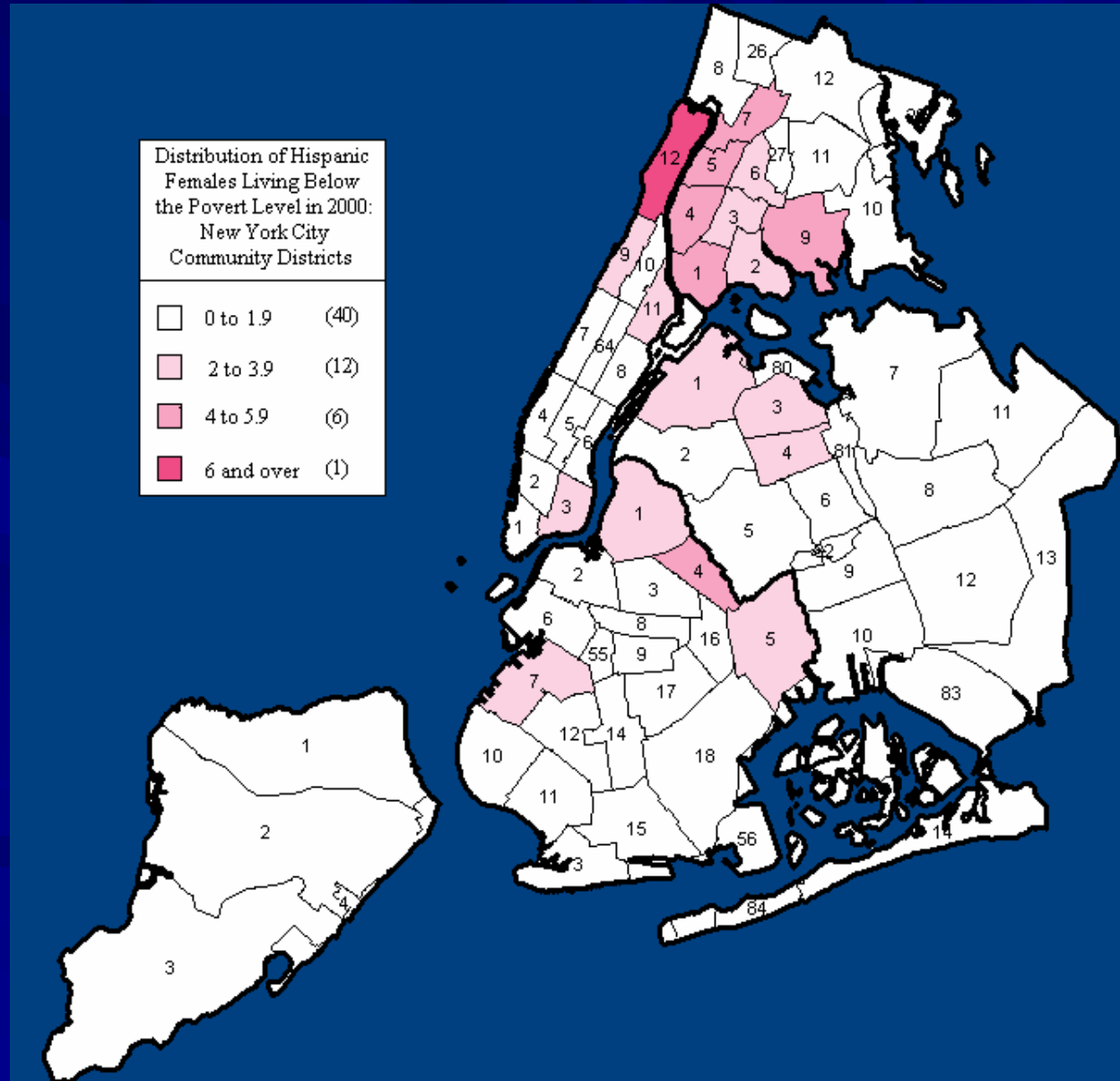
Black Women in Poverty

- In 2000, 39% of Black women in poverty lived seven of the city's Community Districts
- Harlem; Bed-Stuy, Brownsville, Crown Heights, and East New York in Brooklyn and the Jamaica section of Queens



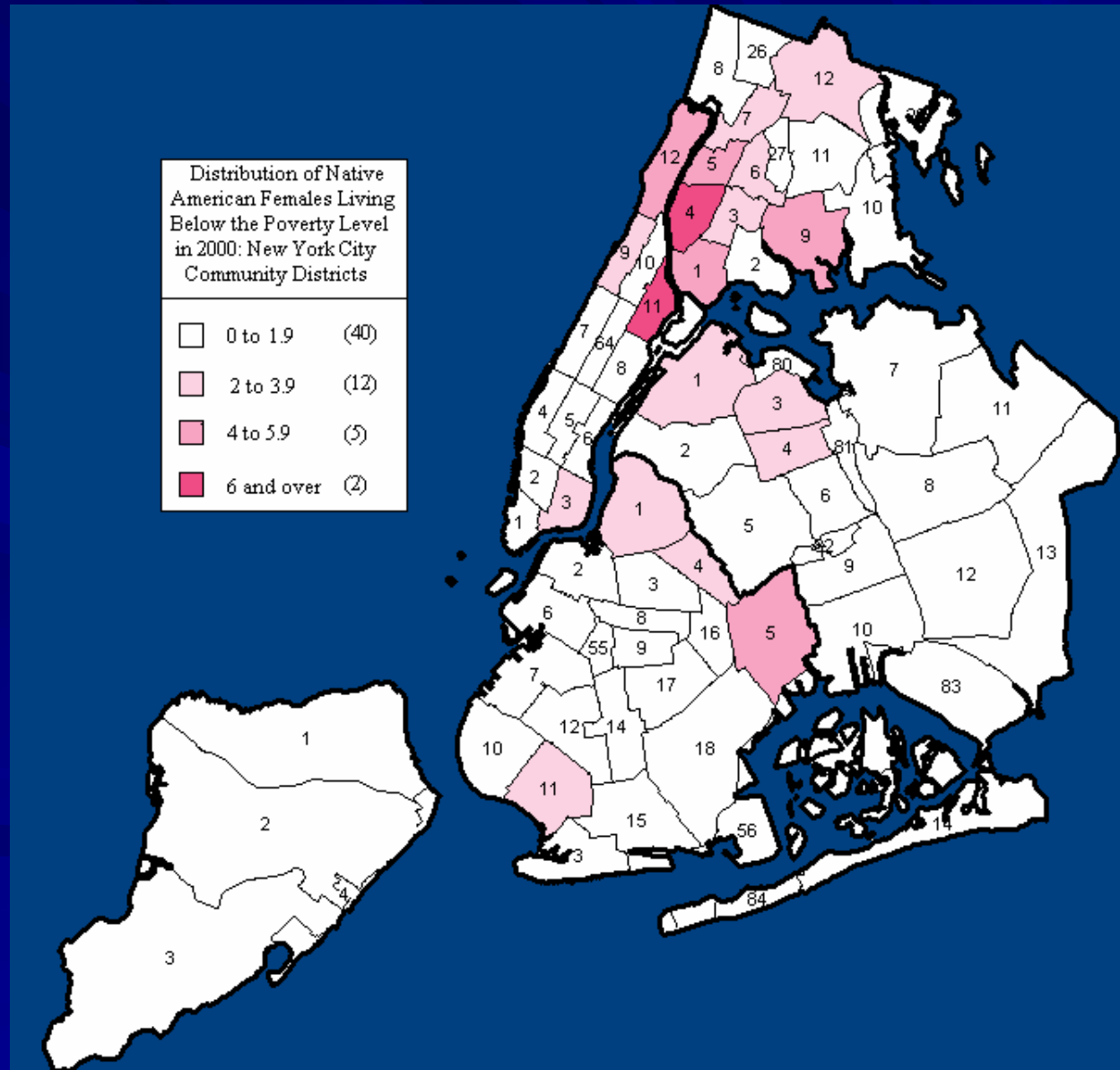
Hispanic Women in Poverty

- In 2000, 37% of Latinas in Poverty resided in few areas of the city.
- Primarily in Washington Heights; the South Bronx and in the Bushwick, Brooklyn.



Native American Women in Poverty

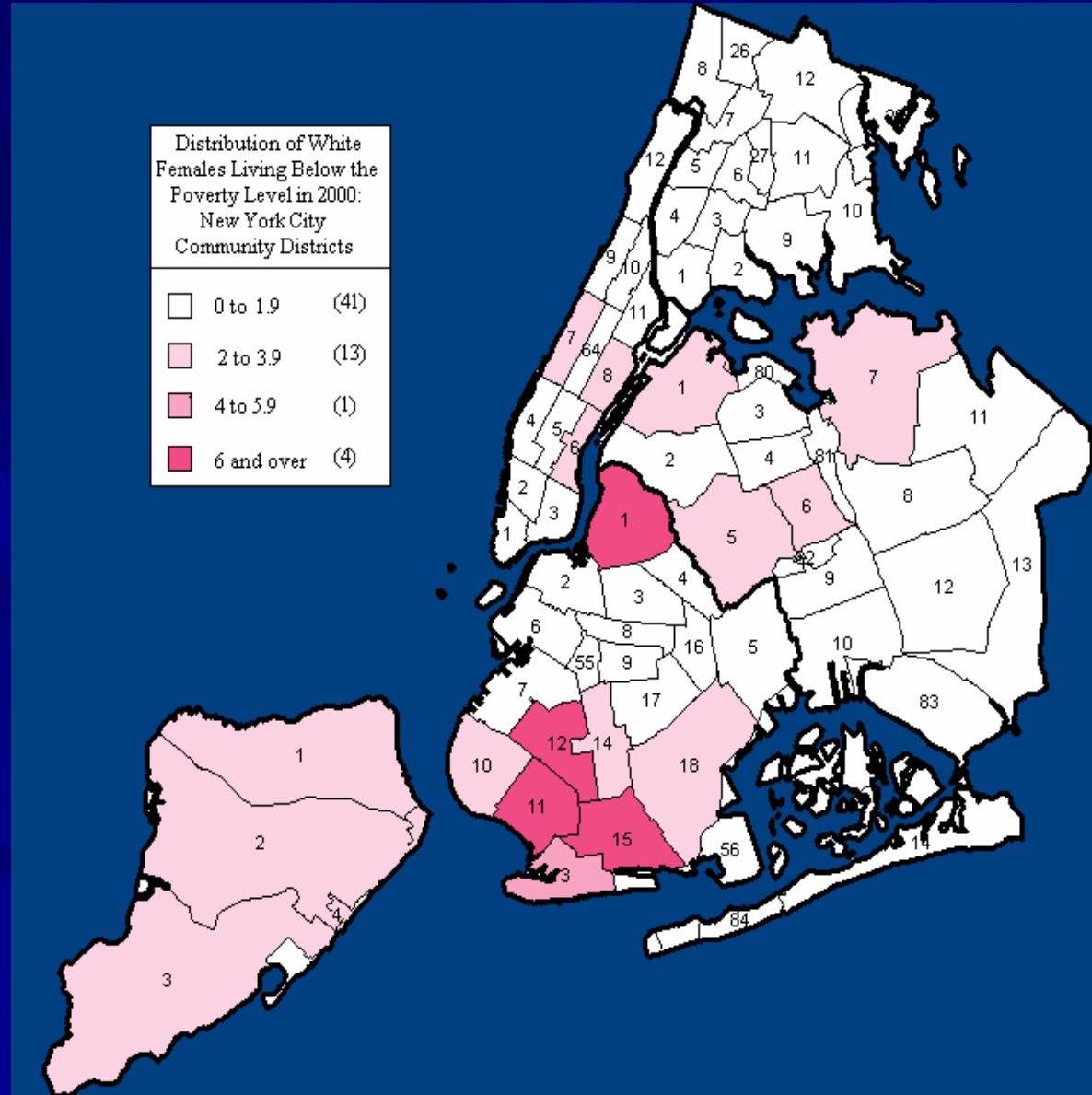
- In 2000, 36 % of Native American women in poverty resided in seven Community Districts.
- Upper Manhattan and the South Bronx as well as East New York



White Women in Poverty

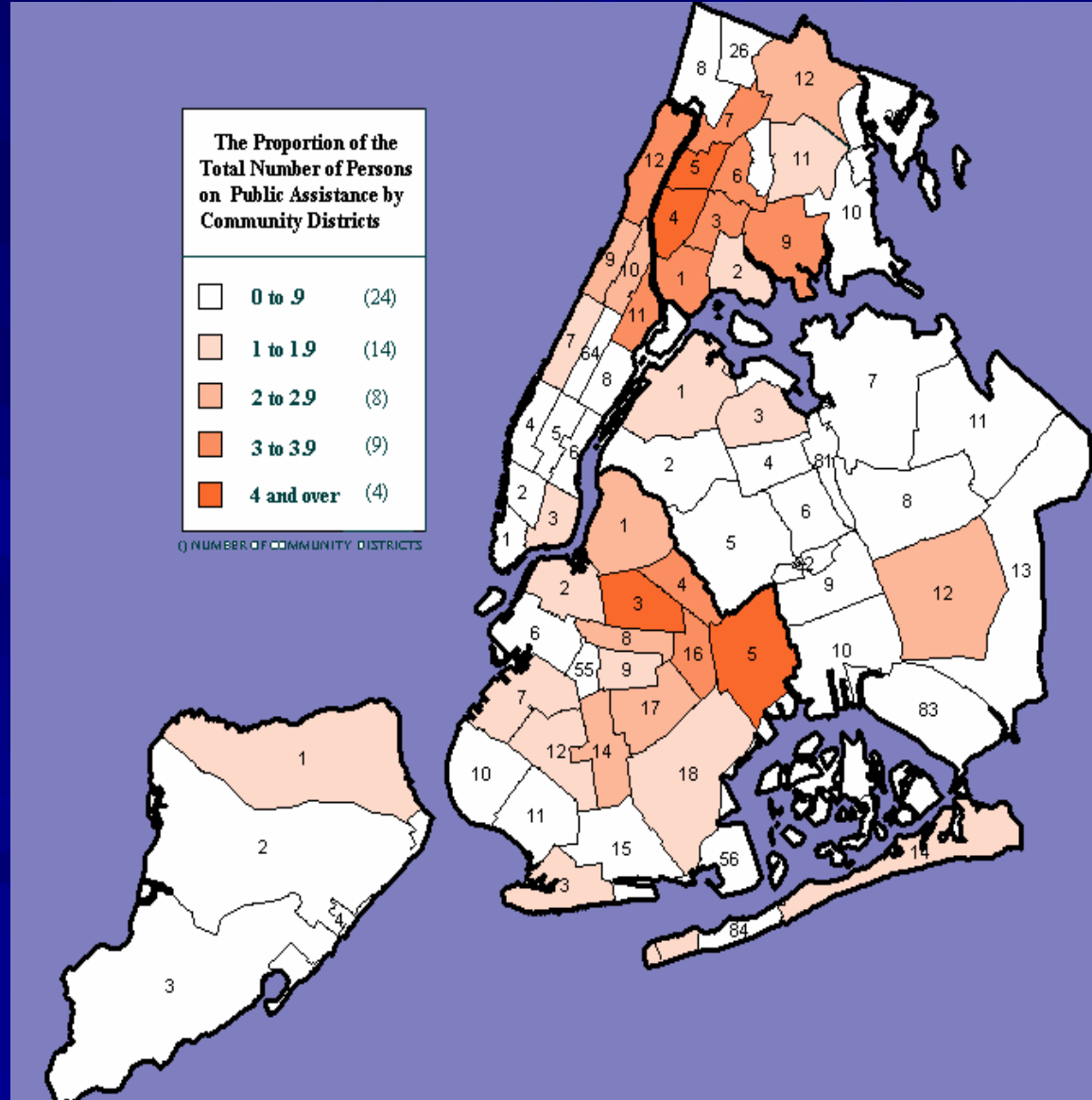
■ In 2000, 30% of the white women in poverty lived in four the city's 59 Community Districts.

■ In Brooklyn, Greenpoint-Williamsburg, Bensonhurst, Borough Park and Gravesend-Sheepshead Bay.



TANF Concentrated Community Districts

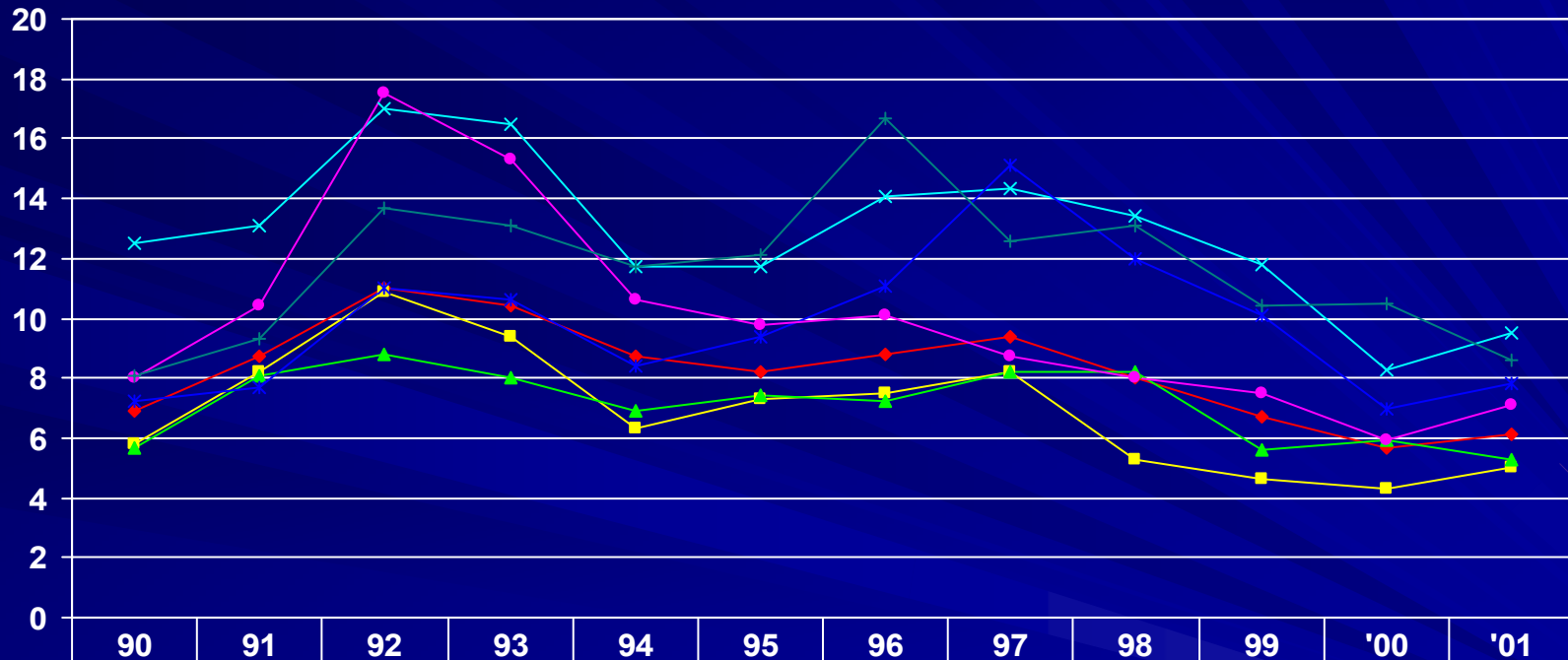
■ In 2002, 54% of all TANF Recipients resided in 15 of the City's 59 Community Districts



The Need for Targeted Support These Districts Account For:

- 60% of the Schools Under Registration Review
- 45% of all the city's children under 5 living in poverty
- 50% of the children entering foster care
- 38% of all the infant deaths
- 42% of all arrests in the city
- 45% of all the Homicide victims
- 50% of the HIV related deaths

Unemployment Rates by Race/Hispanic Origin in New York City: 1990 to 2001

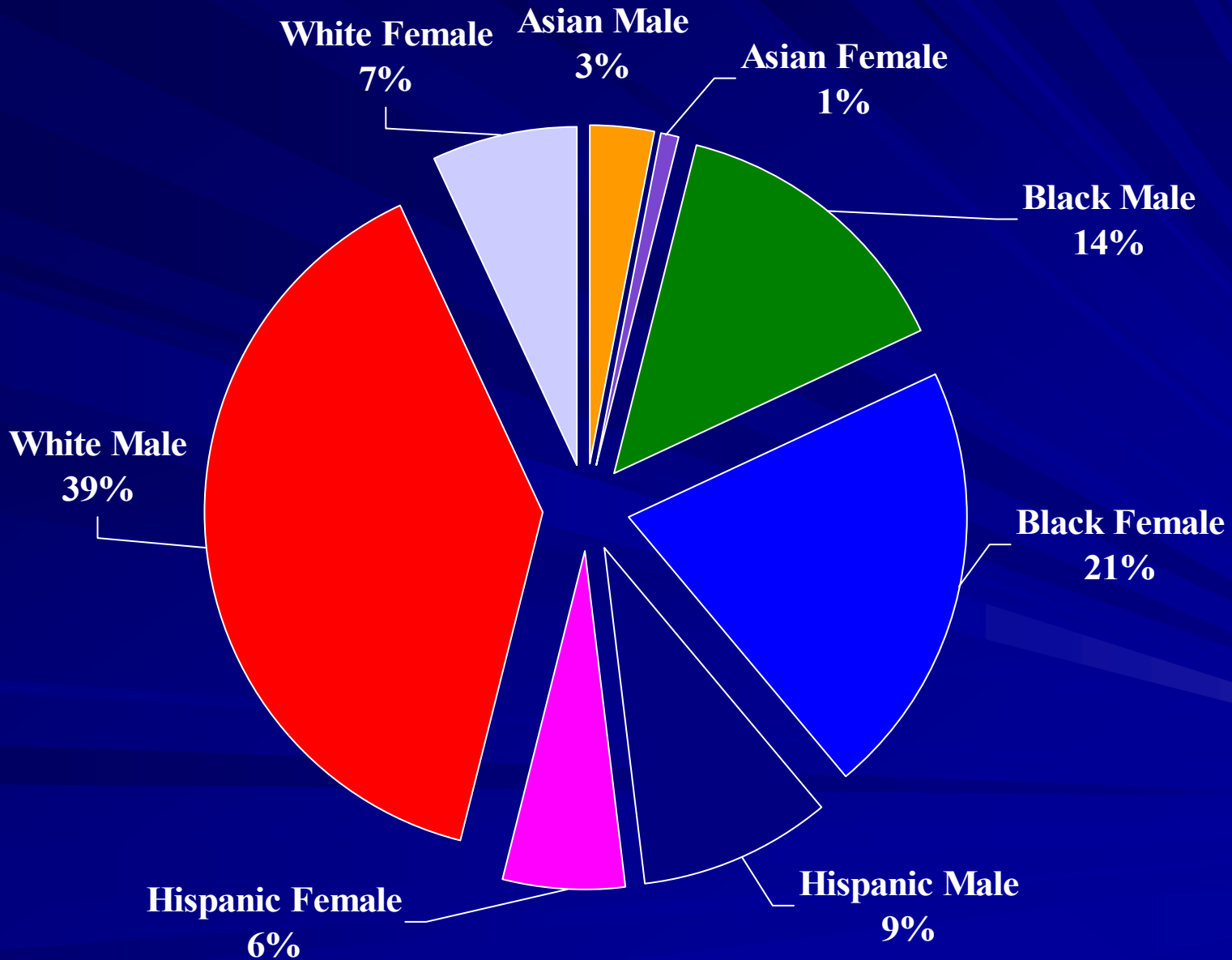


	90	91	92	93	94	95	96	97	98	99	'00	'01
NYC Average	6.9	8.7	11	10.4	8.7	8.2	8.8	9.4	8	6.7	5.7	6.1
White Male	5.8	8.2	10.9	9.4	6.3	7.3	7.5	8.2	5.3	4.6	4.3	5
White Female	5.7	8.1	8.8	8	6.9	7.4	7.2	8.2	8.2	5.6	5.9	5.3
Black Male	12.5	13.1	17	16.5	11.7	11.7	14.1	14.3	13.4	11.8	8.3	9.5
Black Female	7.2	7.7	11	10.6	8.4	9.4	11.1	15.1	12	10.1	7	7.8
Hispanic Male	8	10.4	17.5	15.3	10.6	9.8	10.1	8.7	8	7.5	5.9	7.1
Hispanic Female	8.1	9.3	13.7	13.1	11.7	12.1	16.7	12.6	13.1	10.4	10.5	8.6

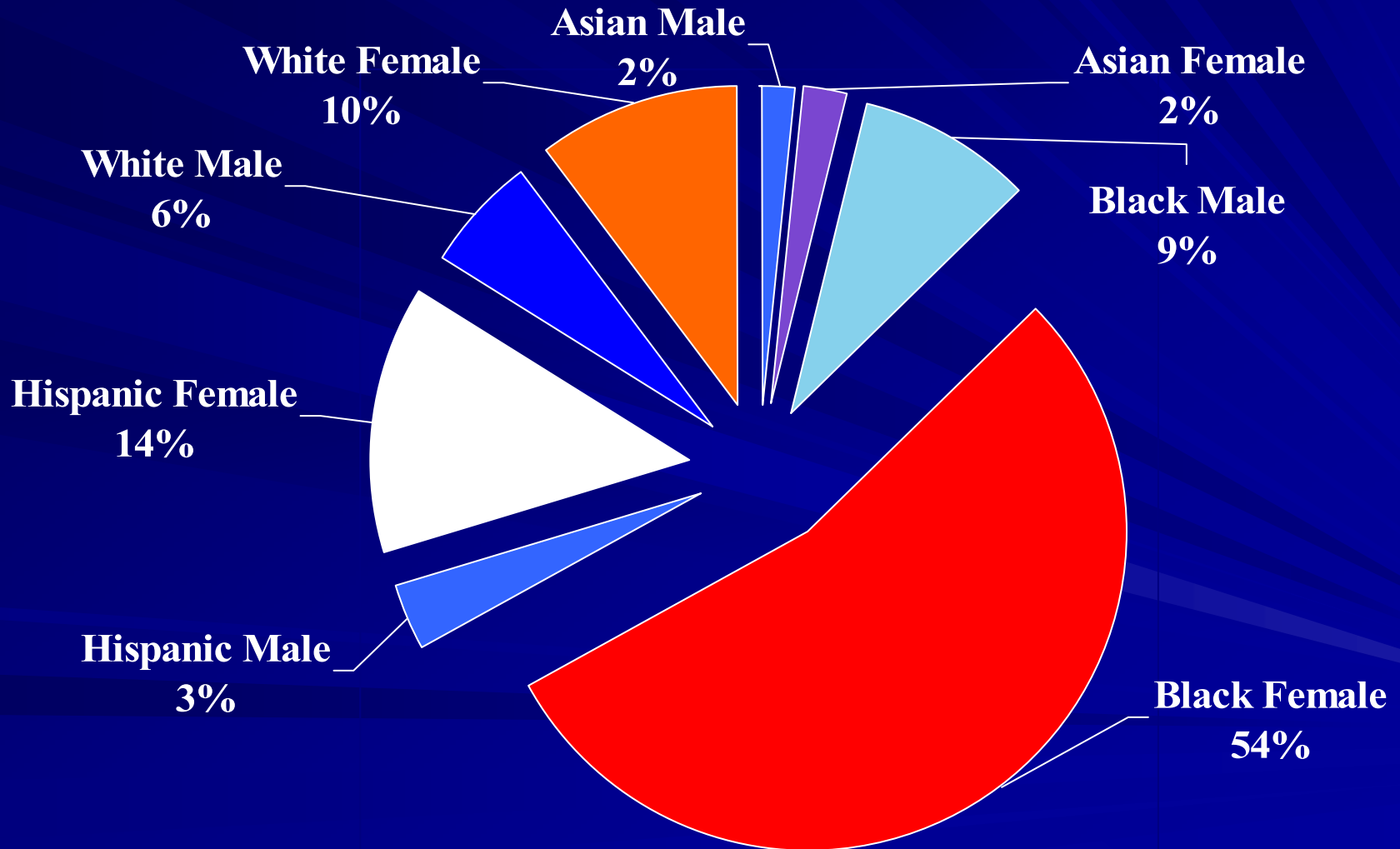
Segmentation of Women of Color in the Private Sector in New York City: 2000

- 6 percent of Latinas were officials and managers while 33 percent were clerical workers
- 7 percent of Black women were officials and managers and 31 percent were clerical workers.
- 7 percent of Native American women were officials and managers and 25 percent were clerical workers.
- 10 percent of Asian women were officials and managers and 25 percent were clerical workers
- 19 percent of white women were officials and managers while 25 percent were clerical workers.

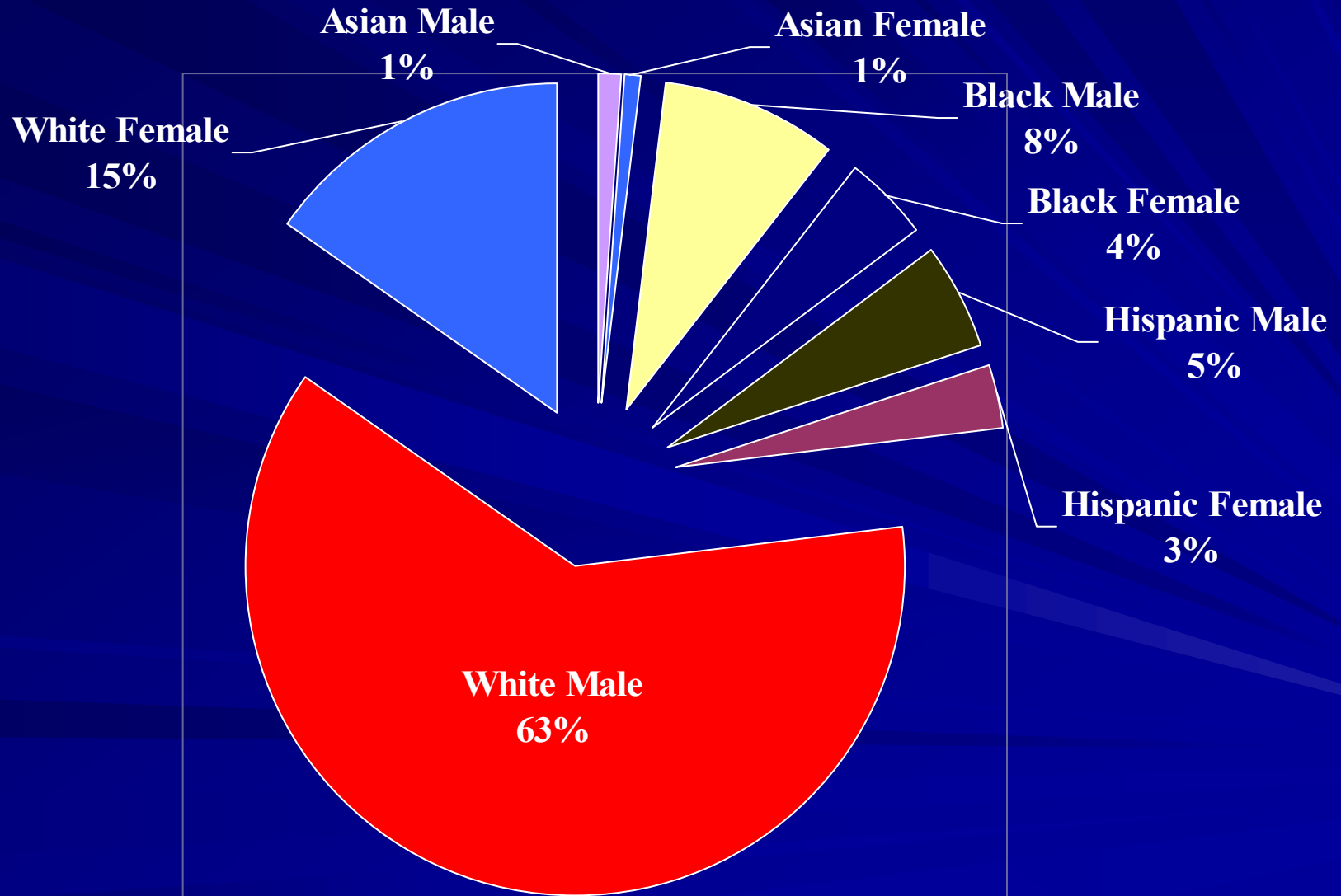
Mayoral Workforce Composition: 2000



Clerical Workers in the Mayoral Workforce by Race and Gender: 2000



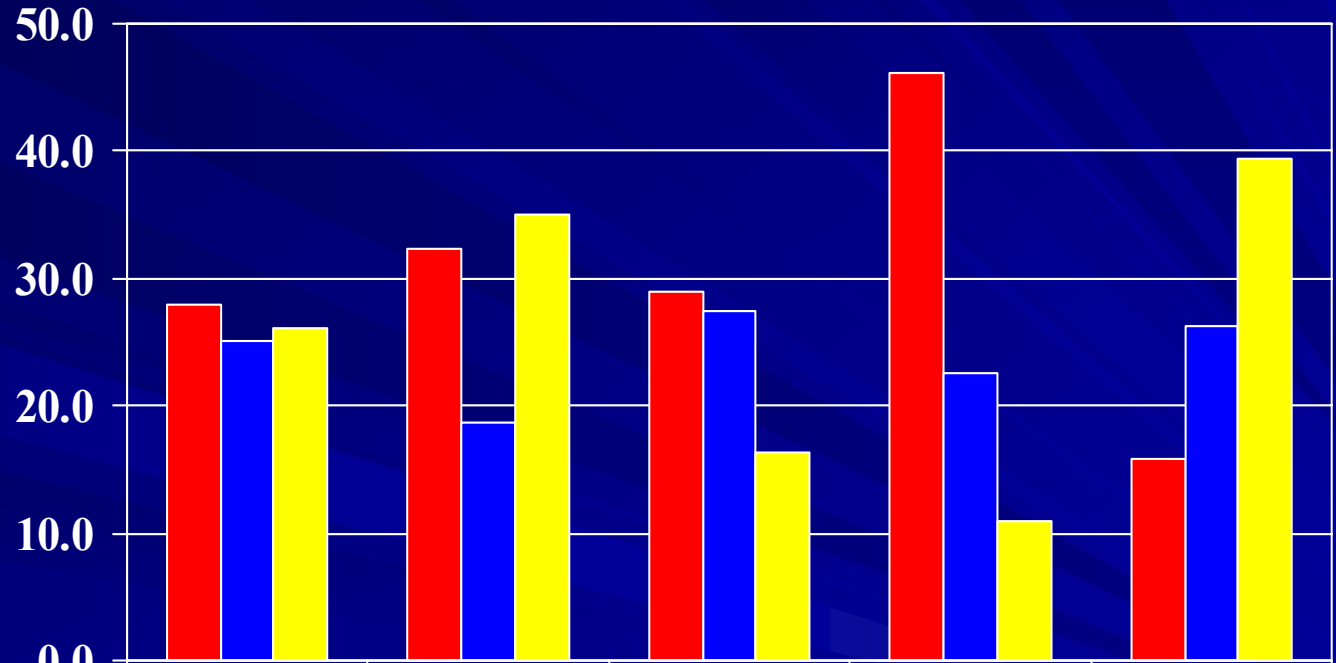
Administrators in the Mayoral Workforce by Race and Gender: 2000



Median Family Income in New York City: 2000

- The median family income among Hispanic families was \$ 28, 949, less than half of white families (46 percent).
- \$ 35, 409 among Black families, 56 percent of white families.
- \$ 42, 199 among Asian families, 67 percent white family household income.
- The income gaps in Manhattan are the most dramatic. White median family income is \$ 119, 525 compared to \$ 25,939 for Hispanic families, \$ 27,744 for black families and \$ 37, 605 for Asian families.

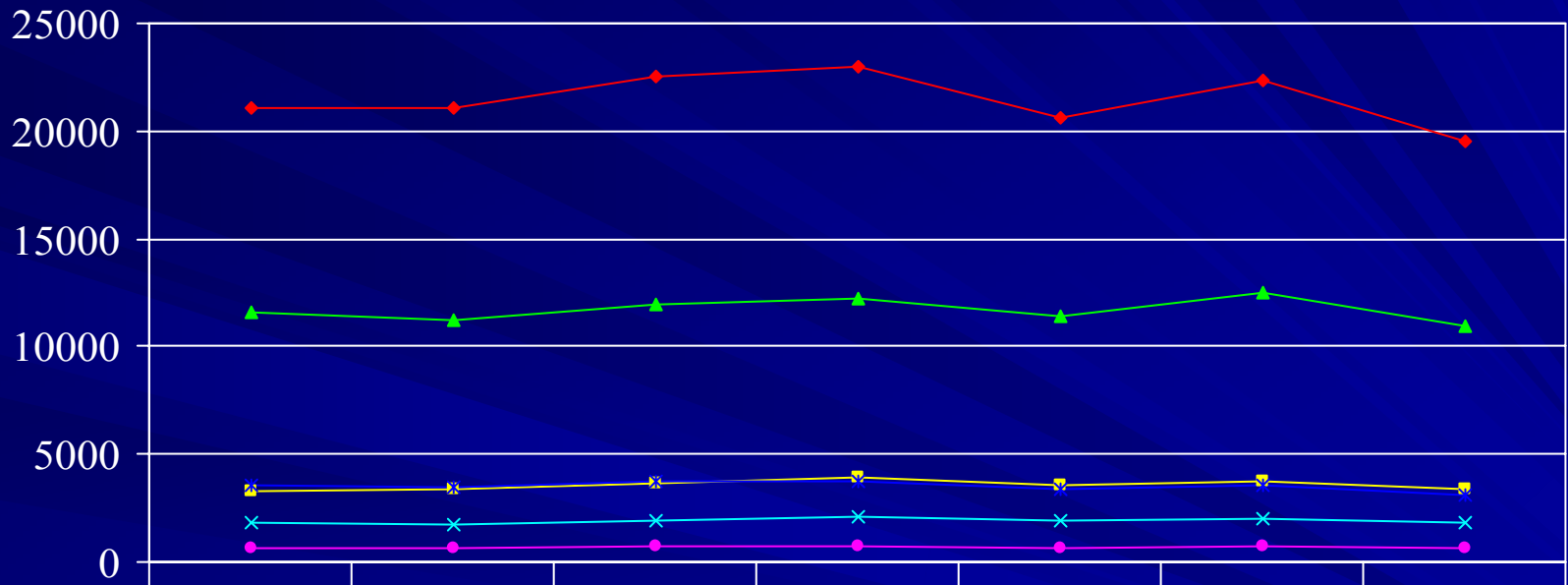
Educational Attainment within Women's Groups by Race/Hispanic Origin in New York City: 2000



	All Female	Asian	Black	Hispanic	White
■ Less than a H.S. education, no diploma	28.0	32.4	29.0	46.2	15.8
■ H.S. Grad, includes GED	25.1	18.7	27.5	22.6	26.2
■ Bachelor's degree or beyond	26.1	35.0	16.4	10.9	39.4

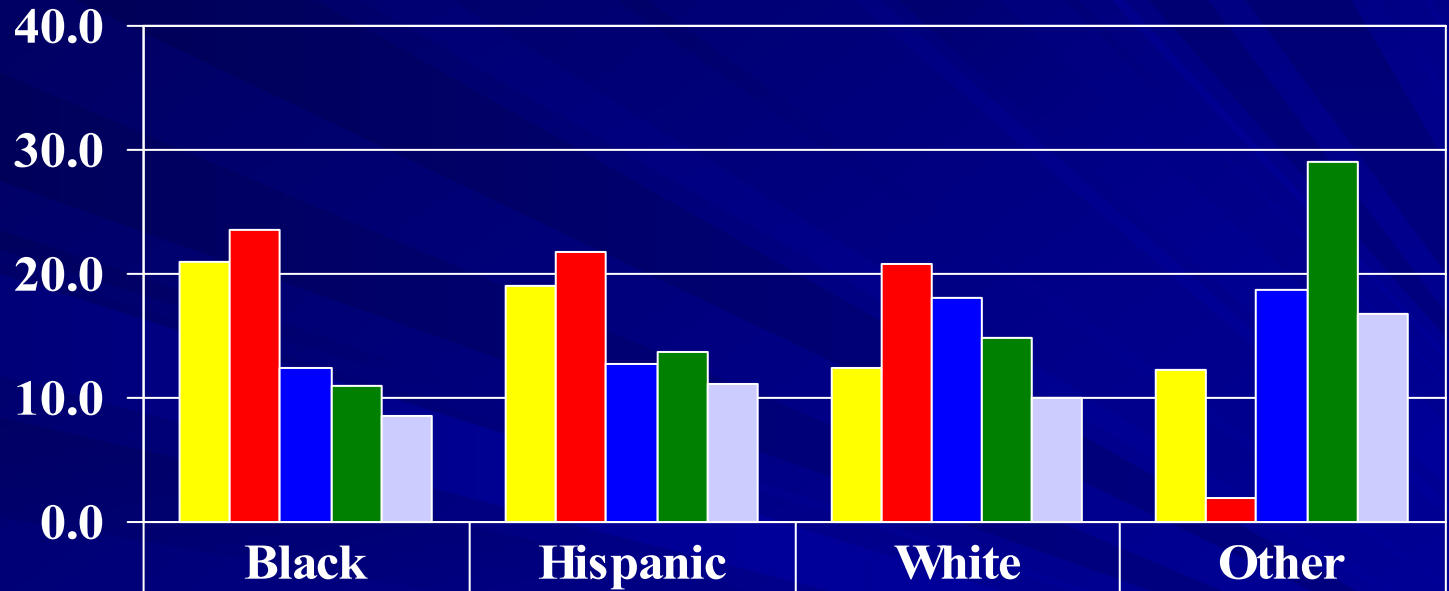
Arrest Rates by Race/Hispanic Origin and Gender for New York City: 1995 to 2001

(rates calculated per 100,000 in specified group aged 16 and over)



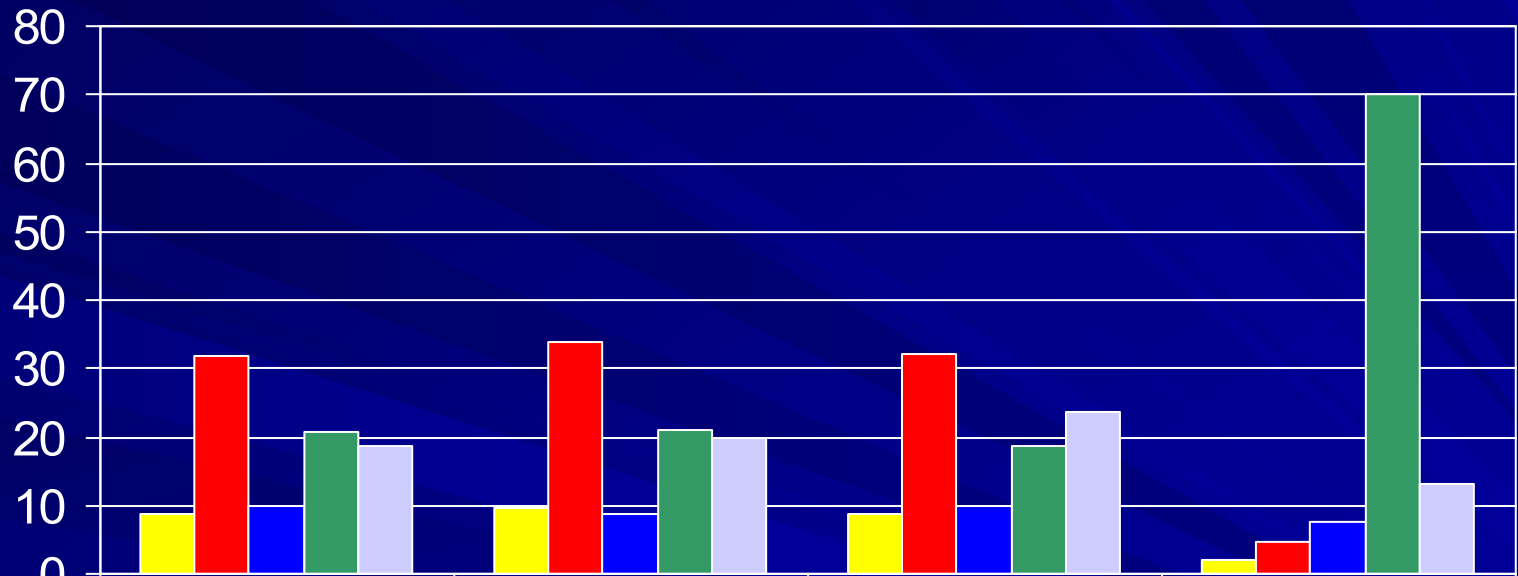
	1995	1996	1997	1998	1999	2000	2001
Black Male	21047.3	21114.9	22512.7	23024.5	20624.5	22347.4	19565.3
Black Female	3325.2	3385.1	3660.6	3928.1	3530.3	3726.3	3344.9
Hispanic Male	11576.7	11219.2	11927.4	12181.9	11443.5	12488.7	10958.1
Hispanic Female	1789.4	1770.8	1897.0	2054.6	1889.0	1988.1	1787.0
White Male	3559.3	3469.7	3715.6	3768.8	3374.8	3520.0	3127.0
White Female	618.8	645.0	698.1	733.1	667.8	701.4	610.6

Leading Causes of Arrest Among Women by Race/Hispanic Origin from NYC: 2001



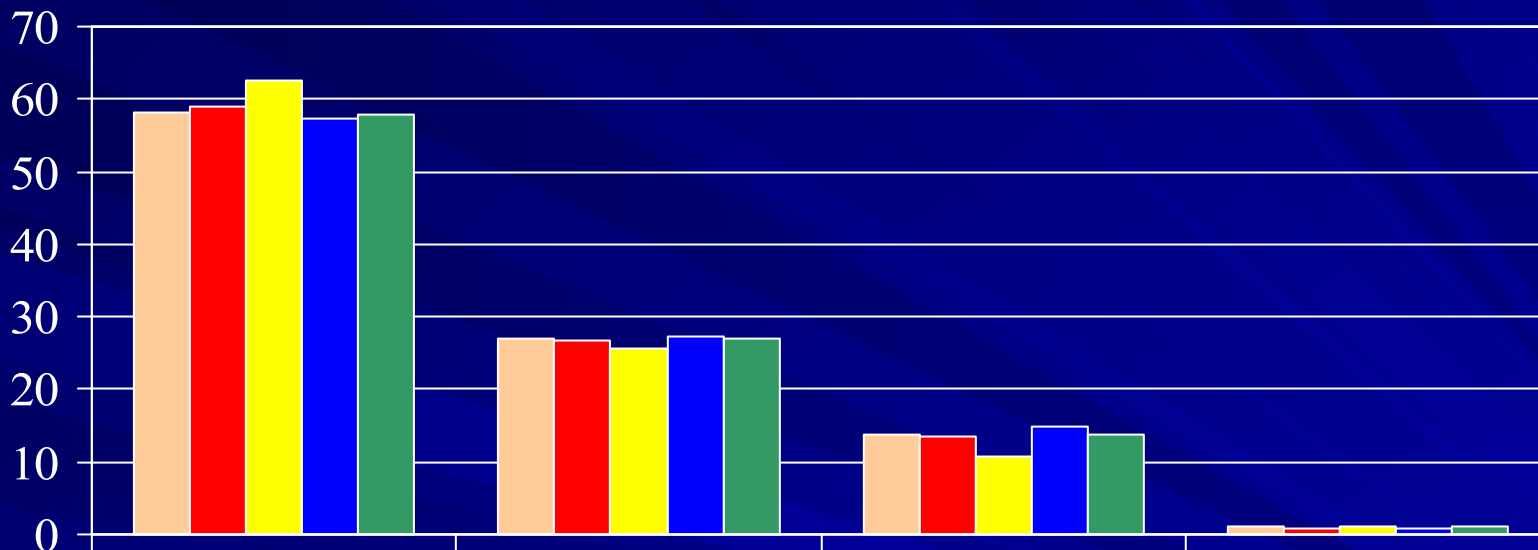
	Black	Hispanic	White	Other
■ Assault	21.0	19.1	12.4	12.3
■ Controlled Sub.	23.6	21.7	20.8	2
■ Larceny	12.5	12.7	18.1	18.7
■ Other Causes	10.9	13.7	14.8	29
■ Prostitution	8.6	11.1	10.0	16.7

Leading Causes of Incarceration Among Women by Race/Hispanic Origin from NYC: 2001



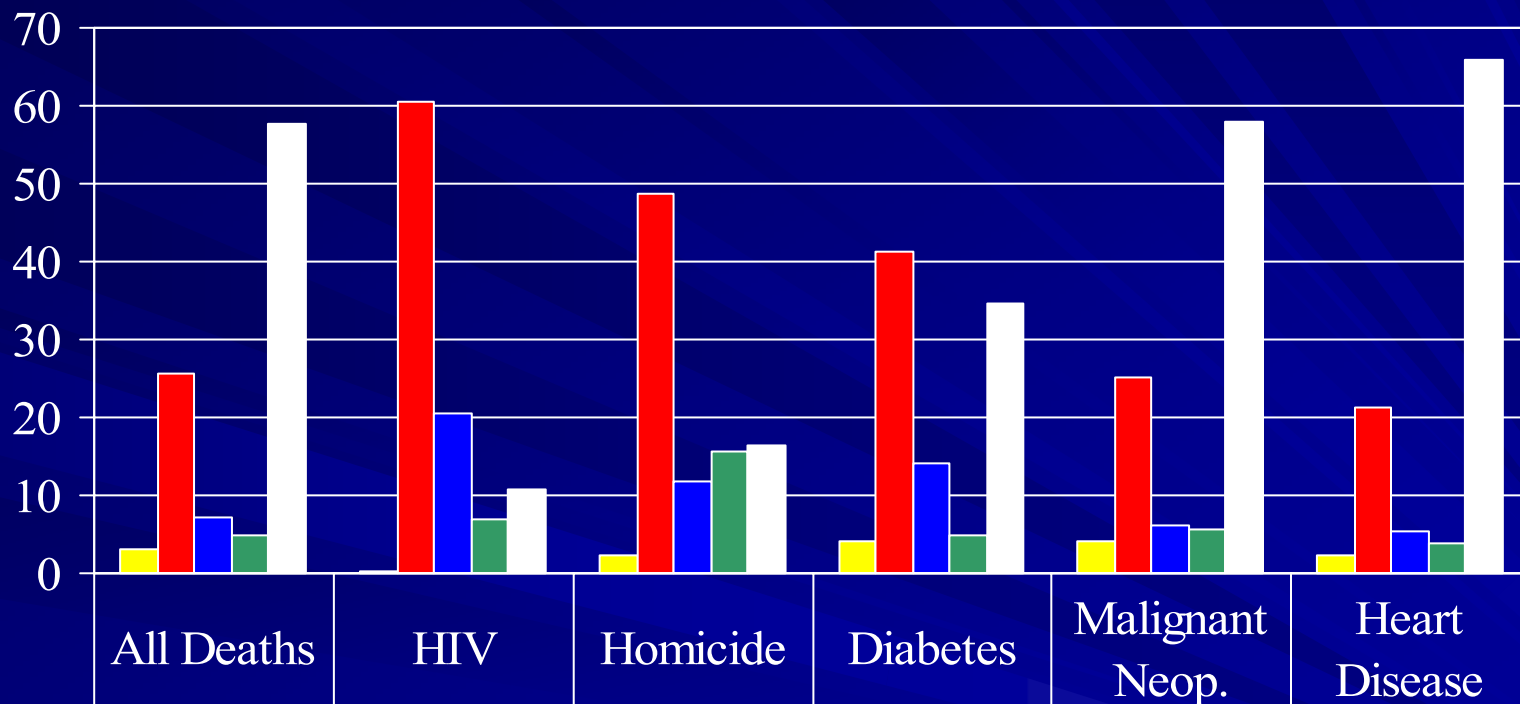
	Black	Hispanic	White	Other
■ Burglary	8.9	9.5	8.9	1.9
■ Controlled Sub.	31.9	33.9	32.2	4.7
■ Larceny	10.0	8.8	10.0	7.5
■ Other Causes	20.6	21.0	18.8	70.1
■ Prostitution	18.7	19.9	23.7	13.1

Share of Incarcerated Females from NYC by Race/Hispanic Origin and Age: 1995 and 2001



	Black	Hispanic	White	Other
■ Total	58.2	27.0	13.8	1.0
■ 16 to 24	58.9	26.7	13.5	0.8
■ 16 to 19	62.6	25.6	10.8	1
■ 20 to 24	57.2	27.2	14.8	0.7
■ over 25	58.0	27.0	13.9	1.1

Share of Female Deaths by Race/Hispanic Origin for Selected Causes in New York City: 2000



■ Asian	3.2	0.3	2.4	4.1	4.1	2.4
■ Black	25.7	60.4	48.8	41.2	25.1	21.2
■ Puerto Rican	7.2	20.4	11.8	14.0	6.2	5.5
■ Other Hispanics	5.0	6.8	15.7	4.8	5.6	3.8
■ White	57.6	10.7	16.5	34.6	58.0	65.9

Infant Mortality Rates by Mother's Race/Hispanic Origin in NYC and USA: 1990 & 2000

