

Criminalization of Black and Hispanic Women

**Testimony for the Women's Issues Committee of
the New York City Council**

February 27, 2003

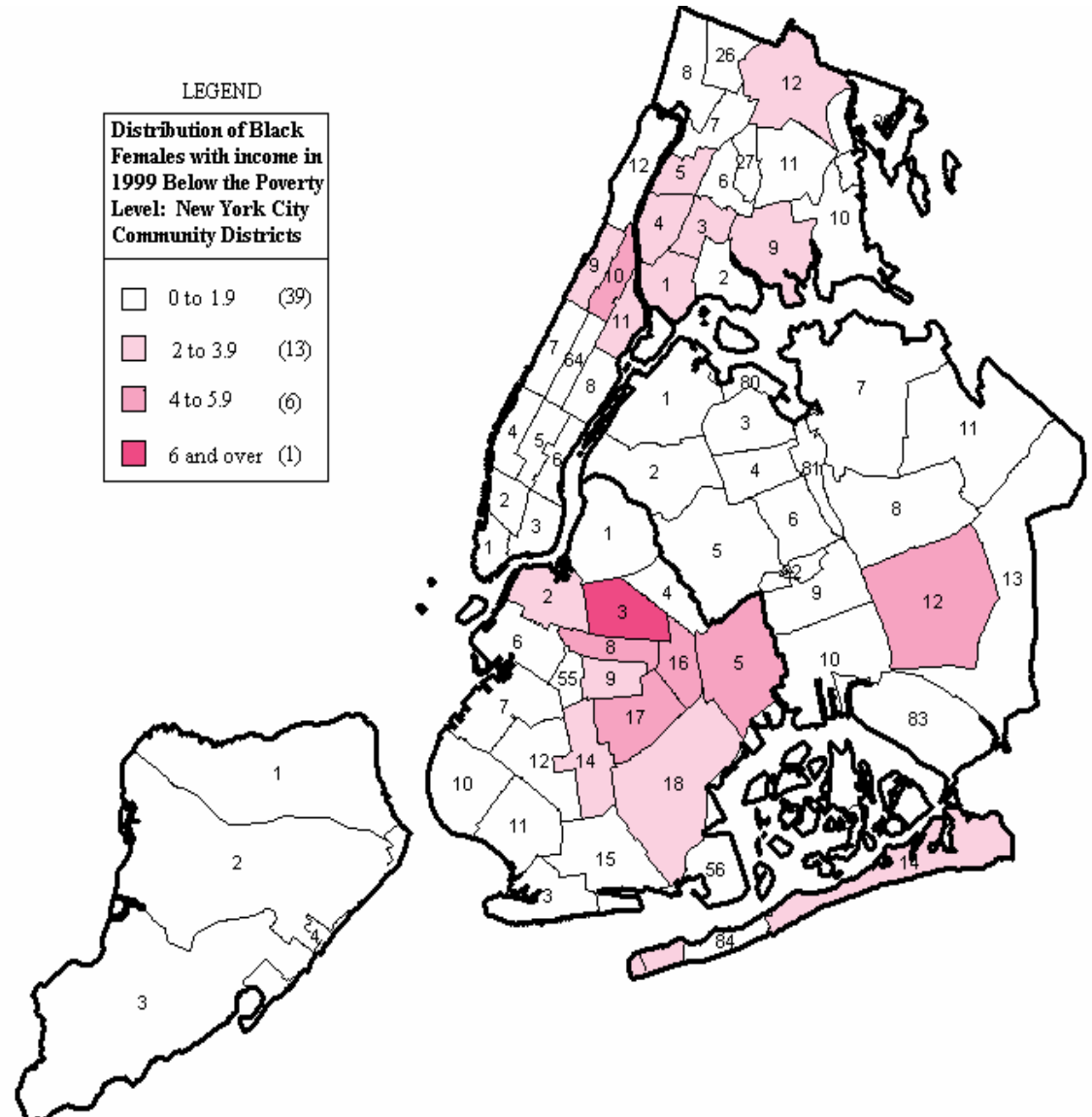
Women of Color Policy Network

Highlights

- In 2000, 73 percent of all women in poverty were women of color.
- Poverty among the various groups are concentrated in several community districts.
- High proportions of arrests at the community district level correlate with the high concentrations of poverty.

Black Women in Poverty

- In 2000, 39% of Black women in poverty lived seven of the city's Community Districts
- Harlem; Bed-Stuy, Brownsville, Crown Heights, and East New York in Brooklyn and the Jamaica section of Queens



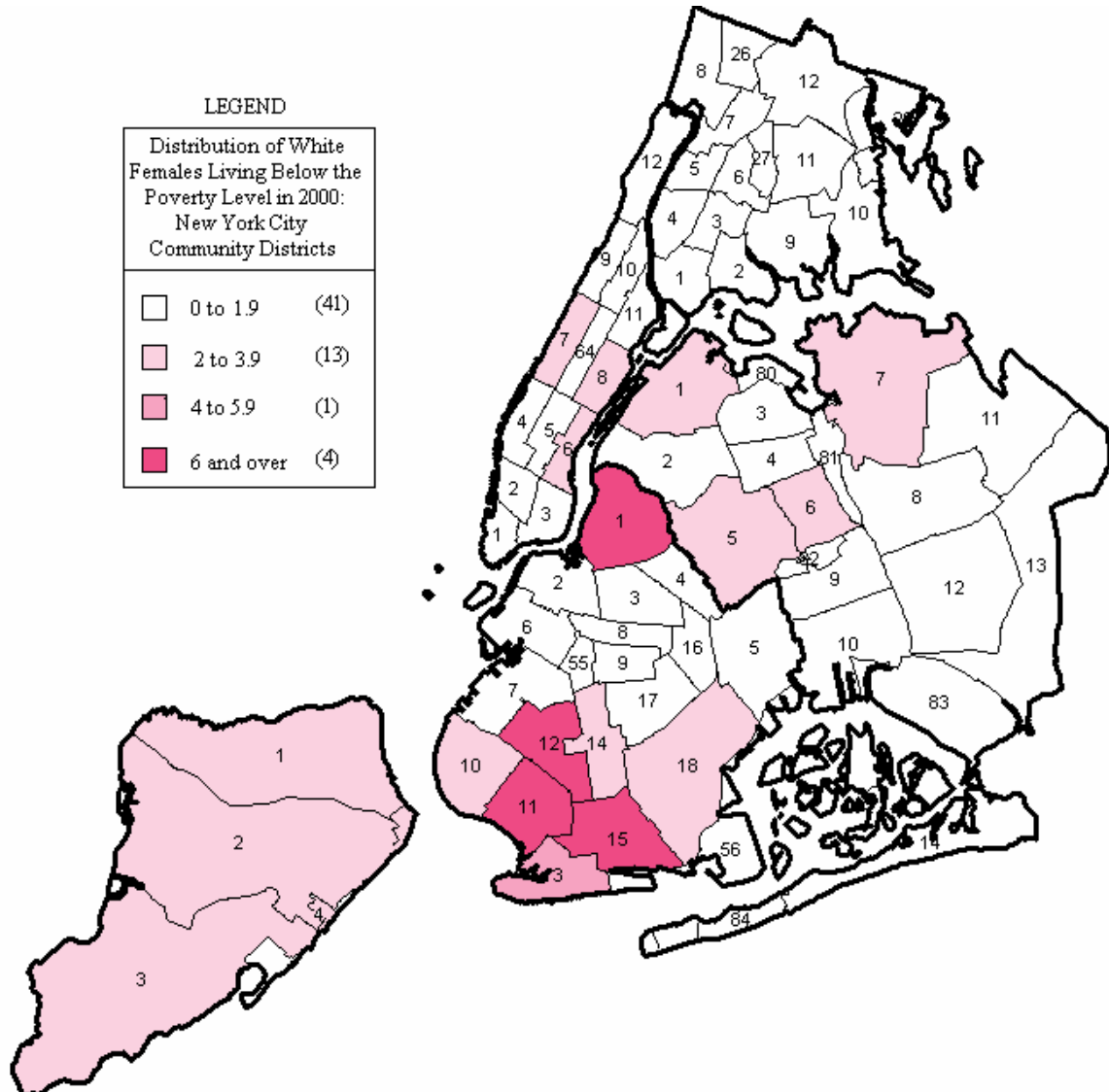
White Women in Poverty

- In 2000, 30% of the white women in poverty lived in four of the city's 59 Community Districts.
- In Brooklyn, Greenpoint-Williamsburg, Bensonhurst, Borough Park and Gravesend-Sheepshead Bay.

LEGEND

Distribution of White Females Living Below the Poverty Level in 2000:
New York City
Community Districts

□	0 to 1.9	(41)
■	2 to 3.9	(13)
■	4 to 5.9	(1)
■	6 and over	(4)

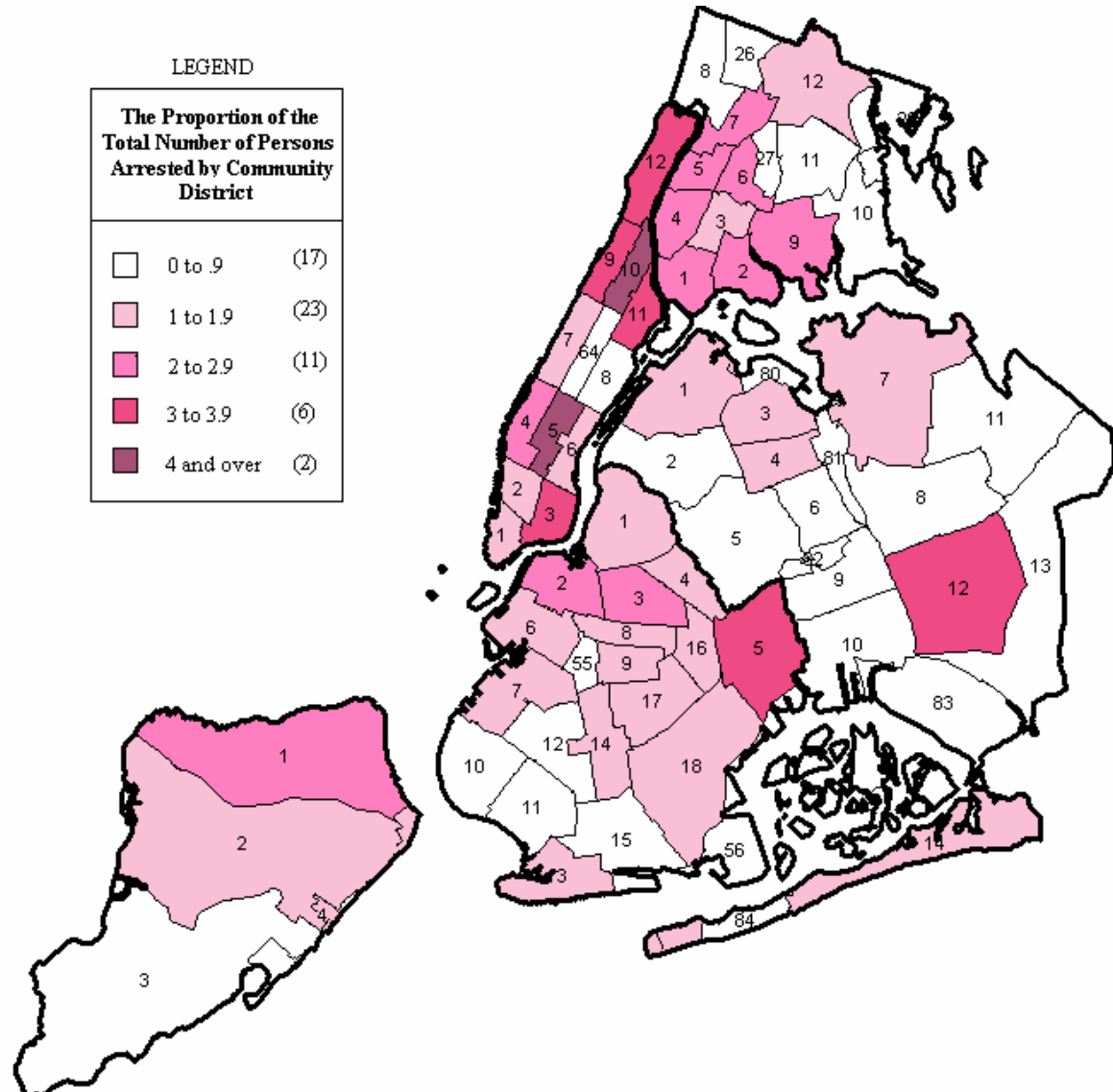


Distribution of Arrests by Community Districts: New York City 1999

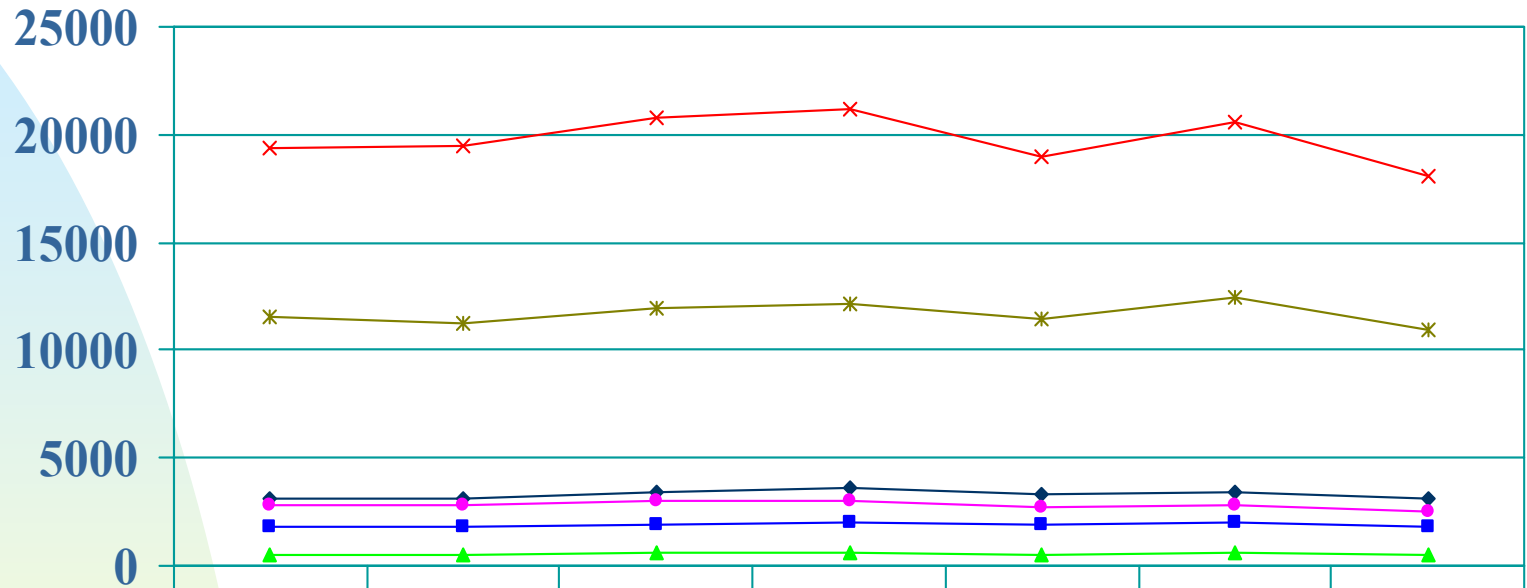
LEGEND

**The Proportion of the
Total Number of Persons
Arrested by Community
District**

	0 to .9	(17)
	1 to 1.9	(23)
	2 to 2.9	(11)
	3 to 3.9	(6)
	4 and over	(2)

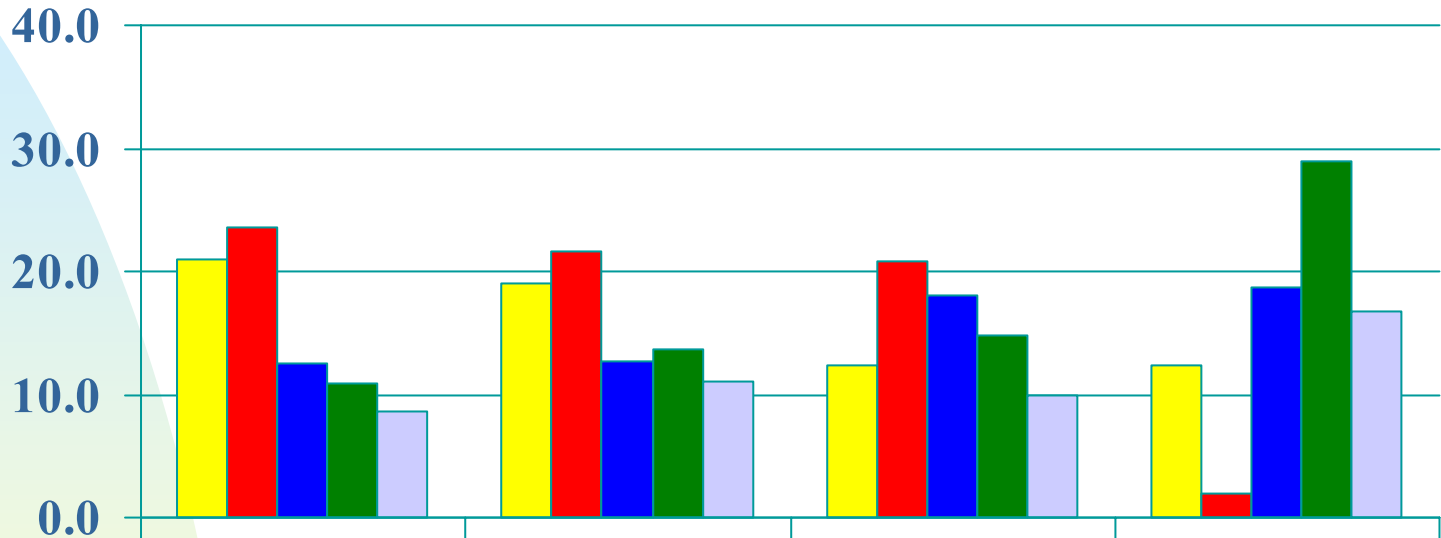


Arrest Rates by Race/Hispanic Origin and Gender: New York City 1995-2001



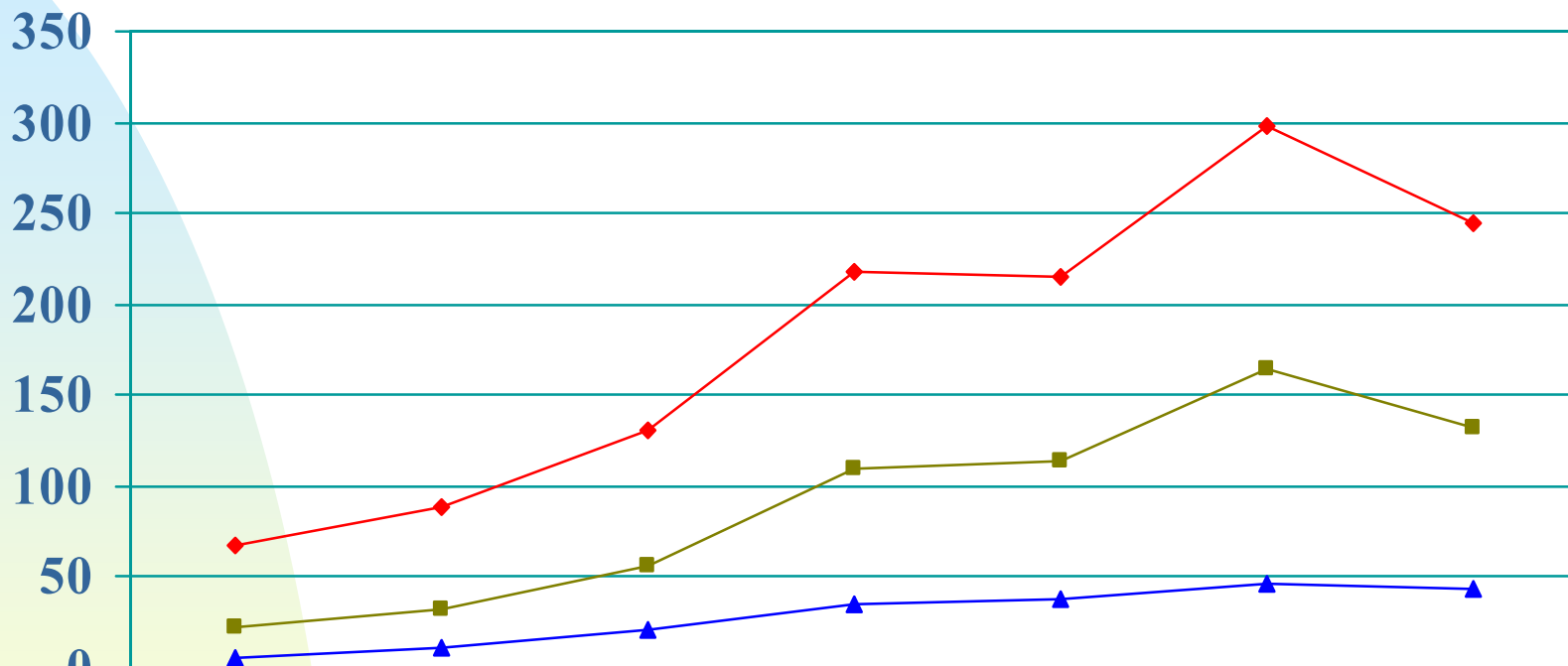
	1995	1996	1997	1998	1999	2000	2001
◆ Black Female	3087.9	3143.5	3399.4	3647.8	3278.4	3460.4	3106.2
■ Hispanic Female	1789.4	1770.8	1897	2054.6	1889	1988.1	1787
▲ White Female	498.5	519.6	562.4	590.6	538	565	491.9
× Black Male	19408.7	19471.1	20760	21232	19018.9	20607.6	18042.1
* Hispanic Male	11576.7	11219.2	11927.4	12181.9	11443.5	12488.7	10958.1
● White Male	2854.1	2782.2	2979.4	3022	2706.1	2822.5	2507.4

Leading Causes of Arrest Among Women by Race/Hispanic Origin from NYC: 2001



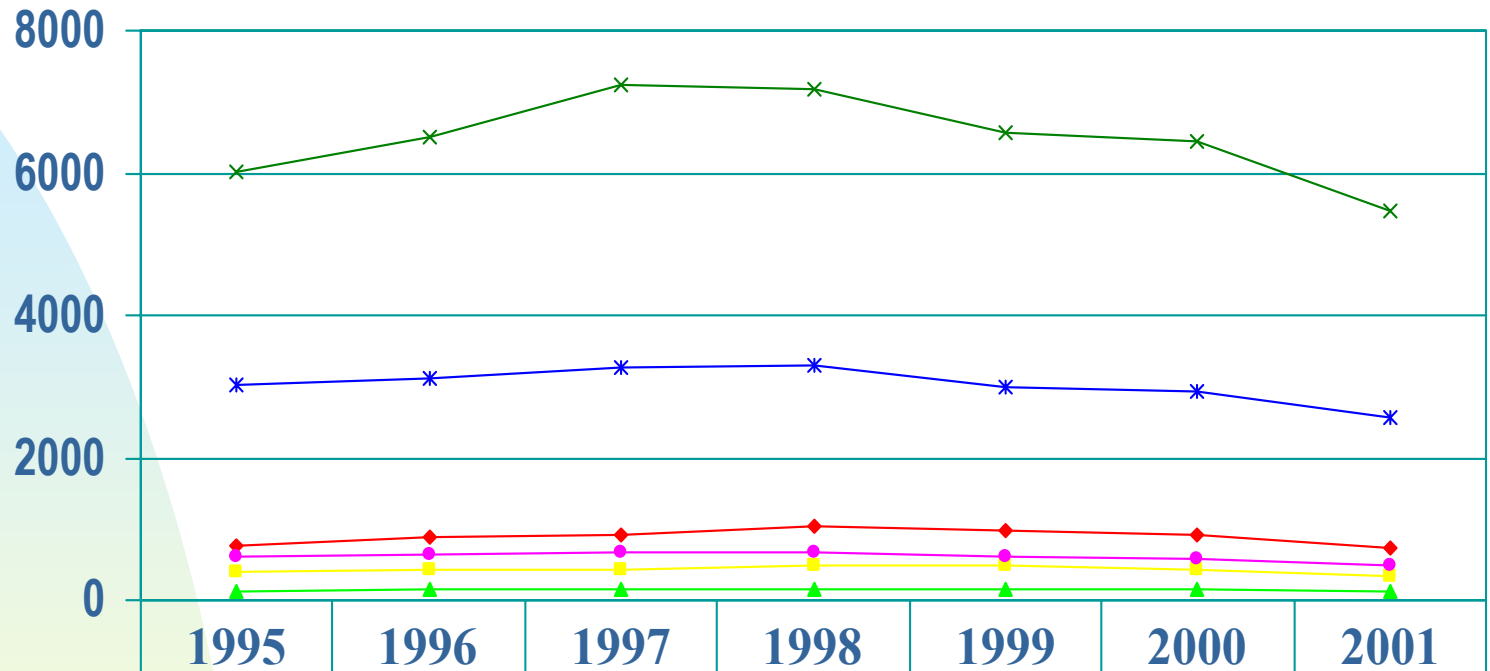
	Black	Hispanic	White	Other
Assault	21.0	19.1	12.4	12.3
Controlled Sub.	23.6	21.7	20.8	2
Larceny	12.5	12.7	18.1	18.7
Other Causes	10.9	13.7	14.8	29
Prostitution	8.6	11.1	10.0	16.7

Female Arrest Rates for Marijuana by Race/Hispanic Origin: New York City 1995-2001



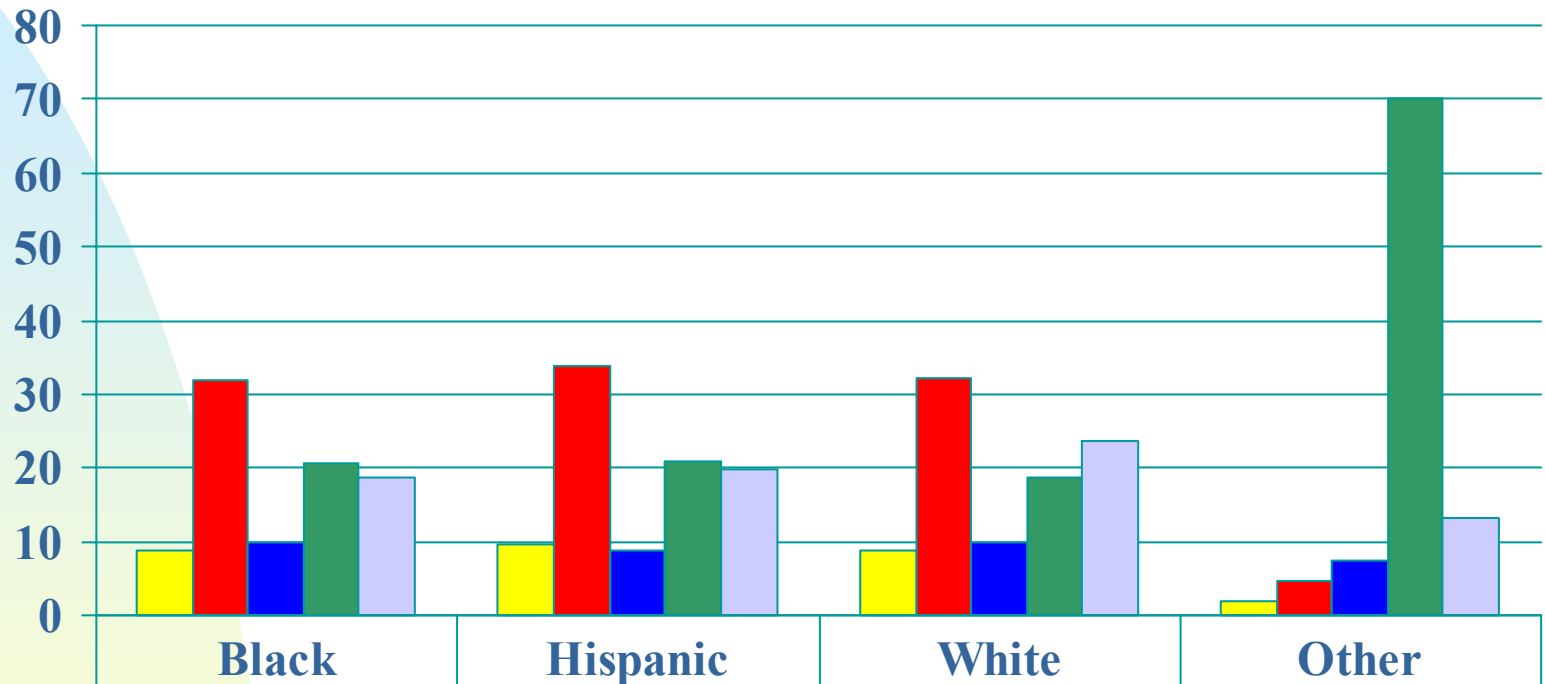
	1995	1996	1997	1998	1999	2000	2001
◆ Black	67.9	88.7	131.4	217.3	214.8	298.5	244.3
■ Hispanic	22.2	32.6	56.6	109.8	113.7	163.9	132.6
▲ White	6.2	11.7	21.3	35.7	38	46.3	43.1

Incarceration Rates by Gender and Race/Hispanic Origin: New York City 1995-2001



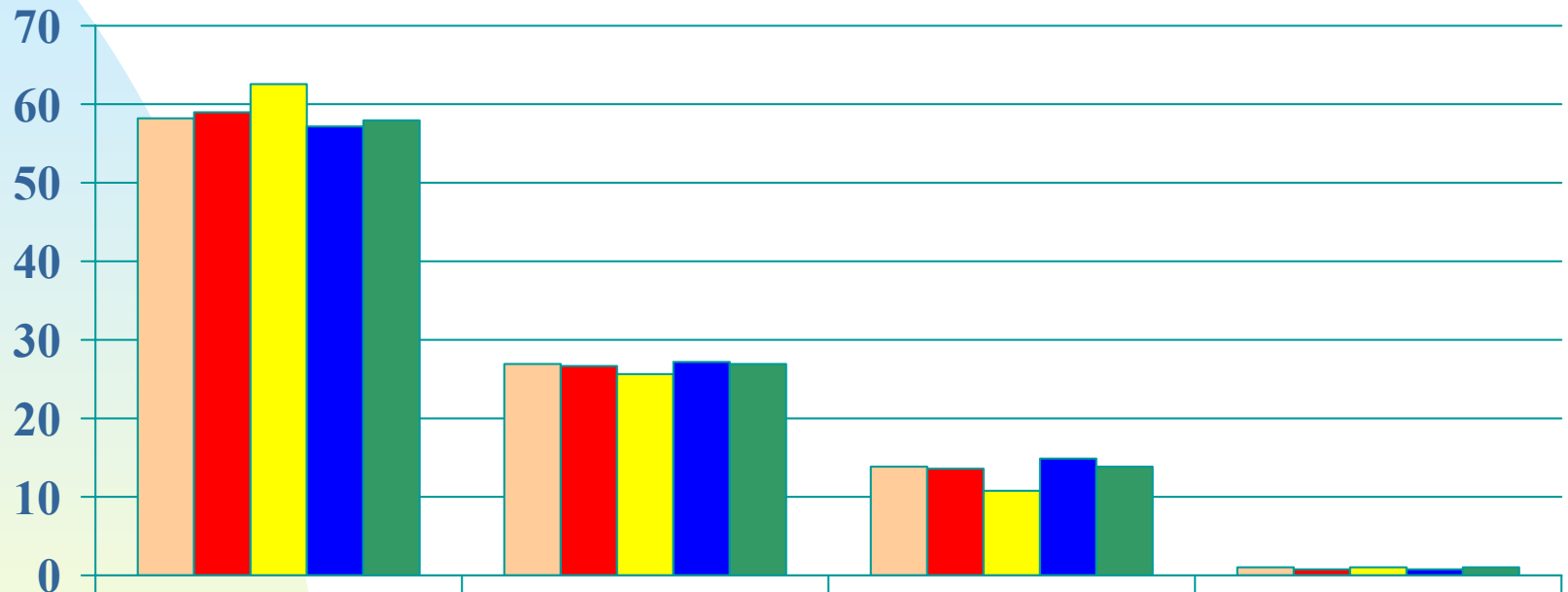
	1995	1996	1997	1998	1999	2000	2001
Black Female	769.1	876.2	911.7	1037.9	967.2	910.5	730.7
Hispanic Female	393.7	429.8	433.4	497.5	474.8	427.4	341.8
White Female	118.3	141.2	161.3	159.1	143	141.1	114.9
Black Male	6029.5	6491.4	7251	7188.6	6562.2	6431.6	5468.3
Hispanic Male	3017.8	3121.9	3278.7	3309	3001.6	2926.2	2551.1
White Male	597.7	646.3	669.2	677.2	620.8	590.3	488.3

Leading Causes of Incarceration Among Women by Race/Hispanic Origin from NYC: 2001



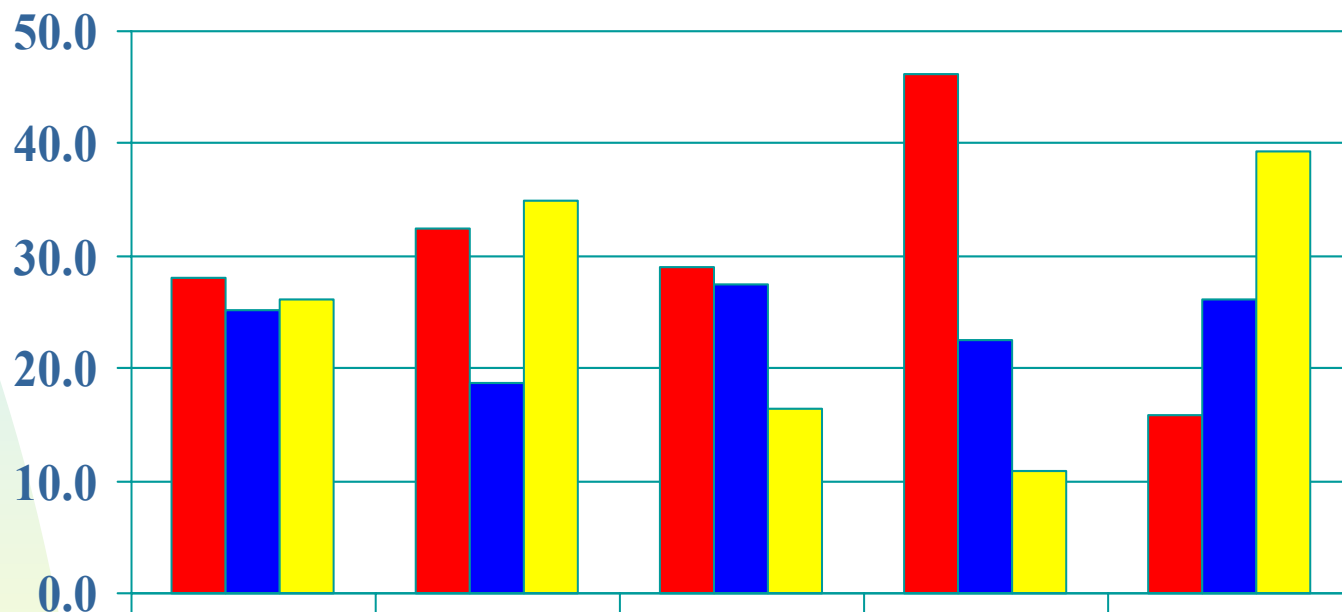
	Black	Hispanic	White	Other
Burglary	8.9	9.5	8.9	1.9
Controlled Sub.	31.9	33.9	32.2	4.7
Larceny	10.0	8.8	10.0	7.5
Other Causes	20.6	21.0	18.8	70.1
Prostitution	18.7	19.9	23.7	13.1

Share of Incarcerated Females from NYC by Race/Hispanic Origin and Age: 2001



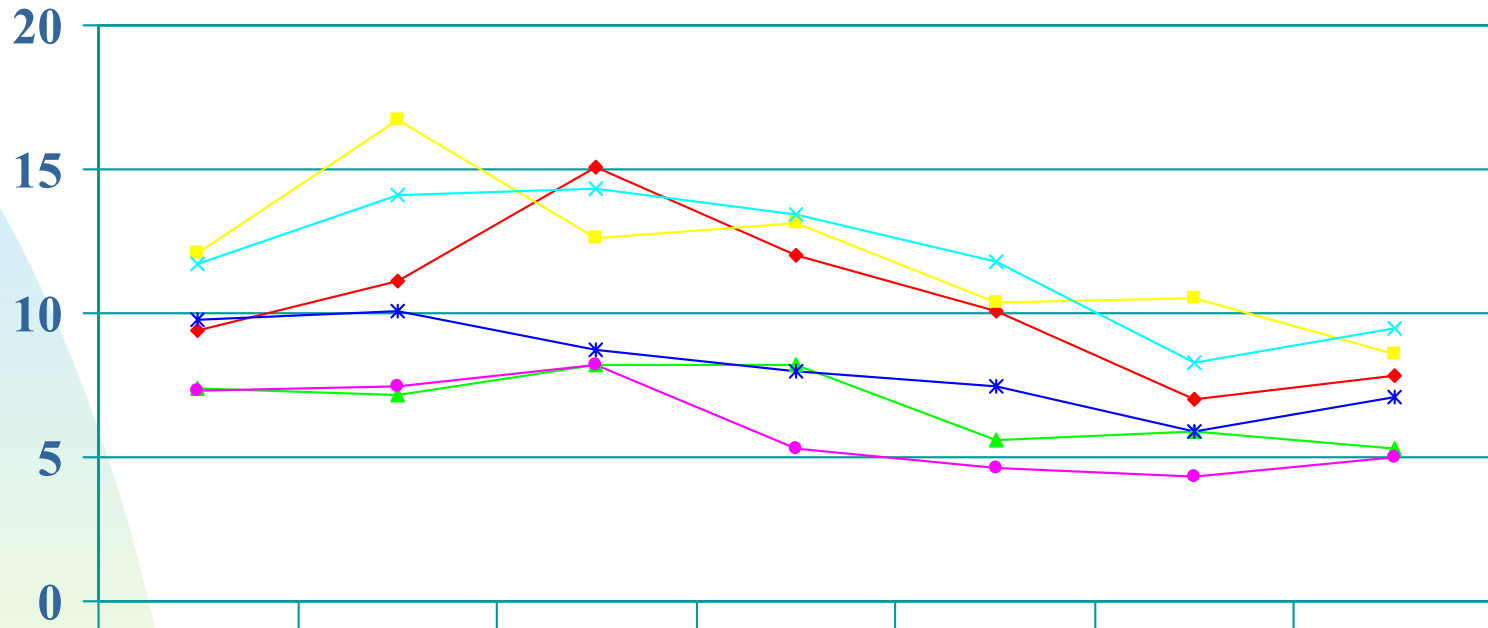
	Black	Hispanic	White	Other
■ Total	58.2	27.0	13.8	1.0
■ 16 to 24	58.9	26.7	13.5	0.8
■ 16 to 19	62.6	25.6	10.8	1
■ 20 to 24	57.2	27.2	14.8	0.7
■ over 25	58.0	27.0	13.9	1.1

Educational Attainment within Women's Groups by Race/Hispanic Origin in New York City: 2000



	All Female	Asian	Black	Hispanic	White
■ Less than a H.S. education, no diploma	28.0	32.4	29.0	46.2	15.8
■ H.S. Grad, includes GED	25.1	18.7	27.5	22.6	26.2
■ Bachelor's degree or beyond	26.1	35.0	16.4	10.9	39.4

Unemployment Rates by Race/Hispanic Origin and Gender: New York City 1995-2001



	1995	1996	1997	1998	1999	2000	2001
◆ Black Female	9.4	11.1	15.1	12	10.1	7	7.8
■ Hispanic Female	12.1	16.7	12.6	13.1	10.4	10.5	8.6
▲ White Female	7.4	7.2	8.2	8.2	5.6	5.9	5.3
✕ Black Male	11.7	14.1	14.3	13.4	11.8	8.3	9.5
* Hispanic Male	9.8	10.1	8.7	8	7.5	5.9	7.1
● White Male	7.3	7.5	8.2	5.3	4.6	4.3	5